

Product datasheet

Recombinant Human DYRK1A protein ab114522

画像数 1

製品の詳細

製品名	Recombinant Human DYRK1A protein
発現系	Wheat germ
アクセッション番号	<u>Q13627</u>
タンパク質長	Protein fragment
Animal free	No
由来	Recombinant
生物種	Human
配列	NQGNQAYQNRPVAANTLDFGQNGAMDVNLTVYSNPRQETGIA GHPTYQFS ANTGPAHYMTEGHLTMRQGADREESPMTGVCVQQSPVAS
予測される分子量	36 kDa including tags
領域	674 to 763

特性

Our **Abpromise guarantee** covers the use of **ab114522** in the following tested applications.

The application notes include recommended starting dilutions; optimal dilutions/concentrations should be determined by the end user.

アプリケーション	ELISA SDS-PAGE Western blot
----------	-----------------------------------

製品の状態	Liquid
-------	--------

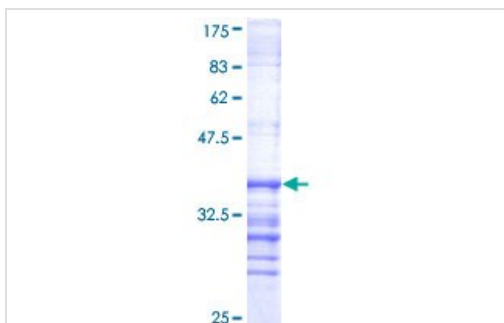
前処理および保存

保存方法および安定性	Shipped on dry ice. Upon delivery aliquot and store at -80°C. Avoid freeze / thaw cycles. pH: 8.00 Constituents: 0.3% Glutathione, 0.79% Tris HCl
------------	---

関連情報

機能	May play a role in a signaling pathway regulating nuclear functions of cell proliferation. Phosphorylates serine, threonine and tyrosine residues in its sequence and in exogenous substrates.
組織特異性	Ubiquitous. Highest levels in skeletal muscle, testis, fetal lung and fetal kidney.
関連疾患	Defects in DYRK1A are the cause of mental retardation autosomal dominant type 7 (MRD7) [MIM:614104]. A disease characterized by primary microcephaly, severe mental retardation without speech, anxious autistic behavior, and dysmorphic features, including bitemporal narrowing, deep-set eyes, large simple ears, and a pointed nasal tip. Mental retardation is characterized by significantly below average general intellectual functioning associated with impairments in adaptative behavior and manifested during the developmental period.
配列類似性	Belongs to the protein kinase superfamily. CMGC Ser/Thr protein kinase family. MNB/DYRK subfamily. Contains 1 protein kinase domain.
発生段階	Expressed in the developing central nervous system. Overexpressed 1.5-fold in fetal Down syndrome brain.
ドメイン	The polyhistidine repeats act as targeting signals to nuclear speckles (PubMed:19266028).
翻訳後修飾	Autophosphorylated on tyrosine residues.
細胞内局在	Nucleus speckle.

画像



12.5% SDS-PAGE analysis of Human DYRK1A protein (ab114522). Stained with Coomassie Blue.

SDS-PAGE - Recombinant Human DYRK1A protein (ab114522)

Please note: All products are "FOR RESEARCH USE ONLY. NOT FOR USE IN DIAGNOSTIC PROCEDURES"

Our Abpromise to you: Quality guaranteed and expert technical support

- Replacement or refund for products not performing as stated on the datasheet
- Valid for 12 months from date of delivery
- Response to your inquiry within 24 hours
- We provide support in Chinese, English, French, German, Japanese and Spanish
- Extensive multi-media technical resources to help you
- We investigate all quality concerns to ensure our products perform to the highest standards

If the product does not perform as described on this datasheet, we will offer a refund or replacement. For full details of the Abpromise, please visit <https://www.abcam.co.jp/abpromise> or contact our technical team.

Terms and conditions

- Guarantee only valid for products bought direct from Abcam or one of our authorized distributors