

Recombinant Human DREAM protein ab101211

画像数 1

製品の詳細

製品名	Recombinant Human DREAM protein
精製度	> 90 % SDS-PAGE. ab101211 was purified using conventional chromatography techniques.
発現系	Escherichia coli
アクセッション番号	<u>Q9Y2W7</u>
タンパク質長	Full length protein
Animal free	No
由来	Recombinant
生物種	Human
配列	<p>MGSSHHHHHSSGLVPRGSHMQPAKEVTKASDGSLLGDLG HTPLSKKEGI KWQRPLRSRQALMRCCLVKWILSSTAPQGSDDSELELSTV RHQPEGLD QLQAQTKFTKKELQSLYRGFKNECPTGLVDEDTFKLIYAQFF PQGDATTY AHFLFNAFDADGNGAIHFEDFVVGLSILLRGTVHEKCLKWAFN LYDINKDG YITKEEMLAIMKSIYDMMGRHTYPILREDAPAEHVERFFMK DRNQDGVV TIEEFLEACQKDENIMSSMQLFENVI</p>
予測される分子量	31 kDa including tags
領域	1 to 256
タグ	His tag N-Terminus

特性

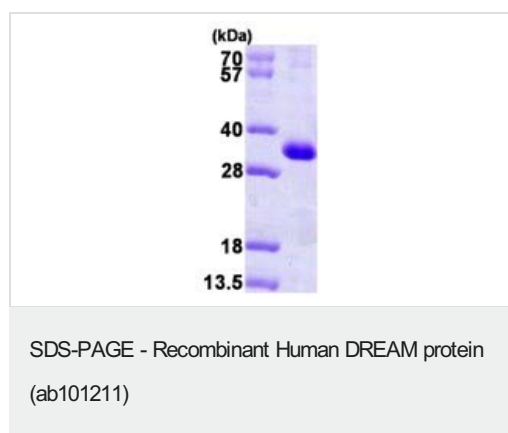
Our **Abpromise guarantee** covers the use of **ab101211** in the following tested applications.

The application notes include recommended starting dilutions; optimal dilutions/concentrations should be determined by the end user.

アプリケーション	Mass Spectrometry
	SDS-PAGE
質量分析	MALDI-TOF
製品の状態	Liquid

備考	Previously labelled as CSEN.
前処理および保存	
保存方法および安定性	<p>Shipped at 4°C. Upon delivery aliquot and store at -20°C or -80°C. Avoid repeated freeze / thaw cycles.</p> <p>pH: 8.00</p> <p>Constituents: 0.0308% DTT, 0.316% Tris HCl, 10% Glycerol (glycerin, glycerine), 0.58% Sodium chloride</p>
関連情報	
機能	<p>Calcium-dependent transcriptional repressor that binds to the DRE element of genes including PDYN and FOS. Affinity for DNA is reduced upon binding to calcium and enhanced by binding to magnesium. Seems to be involved in nociception.</p> <p>Regulatory subunit of Kv4/D (Shal)-type voltage-gated rapidly inactivating A-type potassium channels, such as KCND2/Kv4.2 and KCND3/Kv4.3. Modulates channel expression at the cell membrane, gating characteristics, inactivation kinetics and rate of recovery from inactivation in a calcium-dependent and isoform-specific manner.</p> <p>May play a role in the regulation of PSEN2 proteolytic processing and apoptosis. Together with PSEN2 involved in modulation of beta-amyloid formation.</p>
組織特異性	Highly expressed in brain. Widely expressed at lower levels. Expression levels are elevated in brain cortex regions affected by Alzheimer disease.
配列類似性	<p>Belongs to the recoverin family.</p> <p>Contains 4 EF-hand domains.</p>
翻訳後修飾	<p>Palmitoylated. Palmitoylation enhances association with the plasma membrane.</p> <p>Proteolytically cleaved by caspase-3.</p> <p>Phosphorylation at Ser-63 inhibits cleavage by CASP3.</p>
細胞内局在	Cytoplasm. Cell membrane. Endoplasmic reticulum. Golgi apparatus. Nucleus. Also membrane-bound, associated with the plasma membrane (PubMed:15485870). In the presence of PSEN2 associated with the endoplasmic reticulum and Golgi. The sumoylated form is present only in the nucleus.

画像



15% SDS-PAGE analysis of 3μg ab101211.

Please note: All products are "FOR RESEARCH USE ONLY. NOT FOR USE IN DIAGNOSTIC PROCEDURES"

Our Abpromise to you: Quality guaranteed and expert technical support

- Replacement or refund for products not performing as stated on the datasheet
- Valid for 12 months from date of delivery
- Response to your inquiry within 24 hours
- We provide support in Chinese, English, French, German, Japanese and Spanish
- Extensive multi-media technical resources to help you
- We investigate all quality concerns to ensure our products perform to the highest standards

If the product does not perform as described on this datasheet, we will offer a refund or replacement. For full details of the Abpromise, please visit <https://www.abcam.co.jp/abpromise> or contact our technical team.

Terms and conditions

- Guarantee only valid for products bought direct from Abcam or one of our authorized distributors