

Recombinant Human DHODH protein ab128451

1 References [画像数 1](#)

製品の詳細

製品名	Recombinant Human DHODH protein		
精製度	> 90 % SDS-PAGE. ab128451 is purified using conventional chromatography techniques (anion exchange and gel filtration)		
発現系	Escherichia coli		
アクセッション番号	<u>Q02127</u>		
タンパク質長	Protein fragment		
Animal free	No		
由来	Recombinant		
生物種	Human		
配列	MGSSHHHHHH	SSGLVPRGSH	MGSHMTGDER
	FYAEHLMPTL	QGLLDPEAH	RLAVRFTSLG
	LLPRARFQDS	DMLEVRVLGH	KFRNPVGIAA
	GFDKHGEAVD	GLYKMGFGFV	EIGSVTPKPQ
	EGNPRPRVFR	LPEDQAVINR	YGFNSHGLSV
	VEHRLRARQQ	KQAKLTEDGL	PLGVNLGKNK
	TSVDAAEDYA	EGVRVLGPLA	DYLVVNVSSP
	NTAGLRSLQG	KAELRRLLTK	VLQERDGLRR
	VHRPAVLVKI	APDLTSQDKE	DIASVVKELG
	IDGLIVTNTT	VSRPAGLQGA	LRSETGGLSG
	KPLRDLSTQT	IREMYALTQG	RVPIIGVGGV
	SSGQDALEKI	RAGASLVQLY	TALTFWGPVP
	VGKVKRELEA	LLKEQFGGGV	TDAIGADHRR
予測される分子量	42 kDa including tags		
領域	31 to 395		
タグ	His tag N-Terminus		

特性

Our **Abpromise guarantee** covers the use of **ab128451** in the following tested applications.

The application notes include recommended starting dilutions; optimal dilutions/concentrations should be determined by the end user.

アプリケーション SDS-PAGE

Mass Spectrometry

質量分析

MALDI-TOF

製品の状態

Liquid

備考

Not currently tested for endotoxin levels

前処理および保存

保存方法および安定性

Shipped at 4°C. Store at +4°C short term (1-2 weeks). Upon delivery aliquot. Store at -20°C or -80°C. Avoid freeze / thaw cycle.

pH: 8.00

Constituents: 0.02% DTT, 0.32% Tris HCl, 20% Glycerol (glycerin, glycerine), 0.58% Sodium chloride

関連情報

機能

Catalyzes the conversion of dihydroorotate to orotate with quinone as electron acceptor.

パスウェイ

Pyrimidine metabolism; UMP biosynthesis via de novo pathway; orotate from (S)-dihydroorotate (quinone route): step 1/1.

関連疾患

Defects in DHODH are the cause of postaxial acrofacial dysostosis (POADS) [MIM:263750]; also known as Miller syndrome. POADS is characterized by severe micrognathia, cleft lip and/or palate, hypoplasia or aplasia of the posterior elements of the limbs, coloboma of the eyelids and supernumerary nipples. POADS is a very rare disorder: only 2 multiplex families, each consisting of 2 affected siblings born to unaffected, nonconsanguineous parents, have been described among a total of around 30 reported cases.

配列類似性

Belongs to the dihydroorotate dehydrogenase family. Type 2 subfamily.

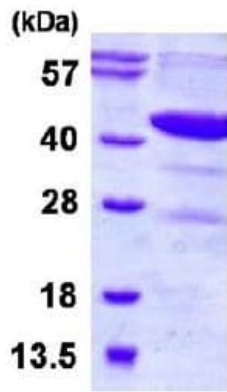
翻訳後修飾

The uncleaved transit peptide is required for mitochondrial targeting and proper membrane integration.

細胞内局在

Mitochondrion inner membrane.

画像



15% SDS-PAGE showing ab128451 at approximately 42.3 kDa (3 μ g).

SDS-PAGE - Recombinant Human DHODH protein (ab128451)

Please note: All products are "FOR RESEARCH USE ONLY. NOT FOR USE IN DIAGNOSTIC PROCEDURES"

Our Abpromise to you: Quality guaranteed and expert technical support

- Replacement or refund for products not performing as stated on the datasheet
- Valid for 12 months from date of delivery
- Response to your inquiry within 24 hours
- We provide support in Chinese, English, French, German, Japanese and Spanish
- Extensive multi-media technical resources to help you
- We investigate all quality concerns to ensure our products perform to the highest standards

If the product does not perform as described on this datasheet, we will offer a refund or replacement. For full details of the Abpromise, please visit <https://www.abcam.co.jp/abpromise> or contact our technical team.

Terms and conditions

- Guarantee only valid for products bought direct from Abcam or one of our authorized distributors