

Recombinant Human DC-SIGN protein ab131780

画像数 1

製品の詳細

製品名	Recombinant Human DC-SIGN protein
発現系	Wheat germ
アクセッション番号	<u>Q9NNX6</u>
タンパク質長	Full length protein
Animal free	No
由来	Recombinant
生物種	Human
配列	<p>MSDSKEPRLQQGLGLEEEQLRGLGFRQTRGYKSLAGCLGHGP</p> <p>LVLQLLSF</p> <p>TLLAGLLVQVSKVPSSISQEQSRQDAIYQNLTLKAAVGELS</p> <p>EKSKLQEI</p> <p>YQELTLKAAVGELPEKSKLQEIYQELTRLKAAVGELPEKSK</p> <p>LQEIYQEL</p> <p>TWLKAAVGELPEKSKMQEIYQELTRLKAAVGELPEKSKQQEI</p> <p>YQELTRLK</p> <p>AAVGELPEKSKQQEIYQELTRLKAAVGELPEKSKQQEIYQEL</p> <p>TQLKAAVE</p> <p>RLCHPCPWEWTFQGNCFMSNSQRNWHDSITACKEVGAQLV</p> <p>VIKSAEEQ</p> <p>NFLQLQSSRSNRFTWMGLSDLNQEGTWQWVDGSPLLPSFKQY</p> <p>WNRGEPNN</p> <p>VGEEDCAEFSGNGWDDKCNLAKFWICKKSAASCSRDEEQFL</p> <p>SPAPATPN PPPA</p>
予測される分子量	72 kDa including tags
領域	1 to 404
タグ	GST tag N-Terminus

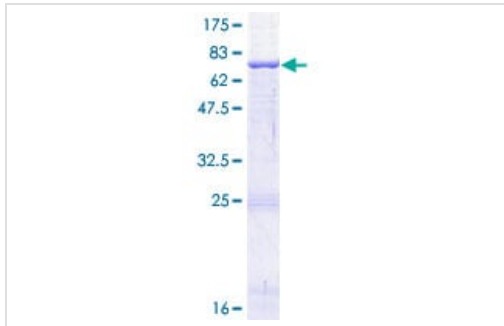
特性

Our **Abpromise guarantee** covers the use of **ab131780** in the following tested applications.

The application notes include recommended starting dilutions; optimal dilutions/concentrations should be determined by the end user.

アプリケーション ELISA

	Western blot
	SDS-PAGE
製品の状態	Liquid
前処理および保存	
保存方法および安定性	<p>Shipped on dry ice. Upon delivery aliquot and store at -80°C. Avoid freeze / thaw cycles.</p> <p>pH: 8.00</p> <p>Constituents: 0.31% Glutathione, 0.79% Tris HCl</p>
関連情報	
機能	<p>Pathogen-recognition receptor expressed on the surface of immature dendritic cells (DCs) and involved in initiation of primary immune response. Thought to mediate the endocytosis of pathogens which are subsequently degraded in lysosomal compartments. The receptor returns to the cell membrane surface and the pathogen-derived antigens are presented to resting T-cells via MHC class II proteins to initiate the adaptive immune response. Probably recognizes in a calcium-dependent manner high mannose N-linked oligosaccharides in a variety of pathogen antigens, including HIV-1 gp120, HIV-2 gp120, SIV gp120, ebolavirus glycoproteins, cytomegalovirus gB, HCV E2, dengue virus gE, Leishmania pifanoi LPG, Lewis-x antigen in Helicobacter pylori LPS, mannose in Klebsiella pneumoniae LPS, di-mannose and tri-mannose in Mycobacterium tuberculosis ManLAM and Lewis-x antigen in Schistosoma mansoni SEA.</p> <p>On DCs it is a high affinity receptor for ICAM2 and ICAM3 by binding to mannose-like carbohydrates. May act as a DC rolling receptor that mediates transendothelial migration of DC precursors from blood to tissues by binding endothelial ICAM2. Seems to regulate DC-induced T-cell proliferation by binding to ICAM3 on T-cells in the immunological synapse formed between DC and T-cells.</p>
組織特異性	Predominantly expressed in dendritic cells and in DC-residing tissues. Also found in placental macrophages, endothelial cells of placental vascular channels, peripheral blood mononuclear cells, and THP-1 monocytes.
配列類似性	Contains 1 C-type lectin domain.
ドメイン	The tandem repeat domain, also called neck domain, mediates oligomerization.
細胞内局在	Secreted and Cell membrane.
画像	



SDS-PAGE - Recombinant Human DC-SIGN protein
(ab131780)

12.5% SDS-PAGE analysis of ab131780 stained with Coomassie Blue.

Please note: All products are "FOR RESEARCH USE ONLY. NOT FOR USE IN DIAGNOSTIC PROCEDURES"

Our Abpromise to you: Quality guaranteed and expert technical support

- Replacement or refund for products not performing as stated on the datasheet
- Valid for 12 months from date of delivery
- Response to your inquiry within 24 hours
- We provide support in Chinese, English, French, German, Japanese and Spanish
- Extensive multi-media technical resources to help you
- We investigate all quality concerns to ensure our products perform to the highest standards

If the product does not perform as described on this datasheet, we will offer a refund or replacement. For full details of the Abpromise, please visit <https://www.abcam.co.jp/abpromise> or contact our technical team.

Terms and conditions

- Guarantee only valid for products bought direct from Abcam or one of our authorized distributors