

Product datasheet

Recombinant Human Cytokeratin 10 protein ab114223

画像数 1

製品の詳細

製品名	Recombinant Human Cytokeratin 10 protein
精製度	>= 80 % Purified via GST Tag. Glutathione Sepharose
発現系	Wheat germ
アクセッション番号	P13645
タンパク質長	Protein fragment
Animal free	No
由来	Recombinant
生物種	Human
配列	KELTTEIDNNEIQISSYKSEITELRRNVQALEIEIQLSQLALK QSLEASLA ETEGRYCVQLSQIQAQISALEEQLQ QIRAETECQNTHEYQQLLDIKIRL ENEIQTYSLLLE
予測される分子量	38 kDa including tags
領域	345 to 454
タグ	GST tag N-Terminus

特性

Our **Abpromise guarantee** covers the use of **ab114223** in the following tested applications.

The application notes include recommended starting dilutions; optimal dilutions/concentrations should be determined by the end user.

アプリケーション	ELISA SDS-PAGE Western blot
製品の状態	Liquid

前処理および保存

保存方法および安定性	Shipped on dry ice. Upon delivery aliquot and store at -80°C. Avoid freeze / thaw cycles. pH: 8.00 Constituents: 0.3% Glutathione, 0.79% Tris HCl
------------	---

関連情報

組織特異性

Seen in all suprabasal cell layers including stratum corneum.

関連疾患

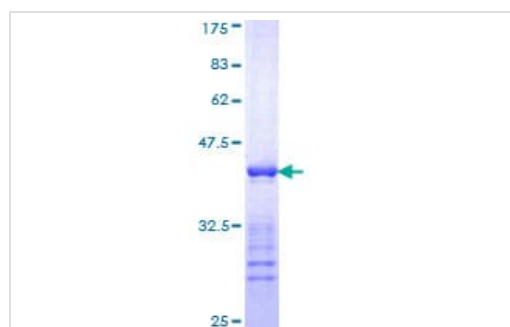
Defects in KRT10 are a cause of bullous congenital ichthyosiform erythroderma (BCIE) [MIM:113800]; also known as epidermolytic hyperkeratosis (EHK) or bullous erythroderma ichthyosiformis congenita of Brocq. BCIE is an autosomal dominant skin disorder characterized by widespread blistering and an ichthyotic erythroderma at birth that persist into adulthood. Histologically there is a diffuse epidermolytic degeneration in the lower spinous layer of the epidermis. Within a few weeks from birth, erythroderma and blister formation diminish and hyperkeratoses develop.

Defects in KRT10 are a cause of ichthyosis annular epidermolytic (AEI) [MIM:607602]; also known as cyclic ichthyosis with epidermolytic hyperkeratosis. AEI is a skin disorder resembling bullous congenital ichthyosiform erythroderma. Affected individuals present with bullous ichthyosis in early childhood and hyperkeratotic lichenified plaques in the flexural areas and extensor surfaces at later ages. The feature that distinguishes AEI from BCIE is dramatic episodes of flares of annular polycyclic plaques with scale, which coalesce to involve most of the body surface and can persist for several weeks or even months.

配列類似性

Belongs to the intermediate filament family.

画像



ab114223 analysed on a 12.5% SDS-PAGE gel stained with Coomassie Blue.

SDS-PAGE - Recombinant Human Cytokeratin 10 protein (ab114223)

Please note: All products are "FOR RESEARCH USE ONLY. NOT FOR USE IN DIAGNOSTIC PROCEDURES"

Our Abpromise to you: Quality guaranteed and expert technical support

- Replacement or refund for products not performing as stated on the datasheet
- Valid for 12 months from date of delivery
- Response to your inquiry within 24 hours
- We provide support in Chinese, English, French, German, Japanese and Spanish
- Extensive multi-media technical resources to help you
- We investigate all quality concerns to ensure our products perform to the highest standards

If the product does not perform as described on this datasheet, we will offer a refund or replacement. For full details of the Abpromise, please visit <https://www.abcam.co.jp/abpromise> or contact our technical team.

Terms and conditions

- Guarantee only valid for products bought direct from Abcam or one of our authorized distributors