

Recombinant Human Cytohesin 2 protein ab134606

画像数 1

製品の詳細

製品名	Recombinant Human Cytohesin 2 protein		
精製度	> 90 % SDS-PAGE. ab134606 was purified using conventional chromatography techniques.		
発現系	Escherichia coli		
アクセッション番号	<u>Q99418-2</u>		
タンパク質長	Full length protein		
Animal free	No		
由来	Recombinant		
生物種	Human		
配列	MGSSHHHHHH	SSGLVPRGSH	MGSMDGVYE
	PPDLTPEERM	ELENIRRRKQ	ELLVEIQRLR
	EELSEAMSEV	EGLEANEGSK	TLQRNRKMAM
	GRKKFNMDPK	KGIQFLVENE	LLQNTPEEIA
	RFLYKGEGLN	KTAIGDYLGE	REELNLAVLH
	AFVDLHEFTD	LNLVQALRQF	LWSFRLPGEA
	QKIDRMMEAF	AQRYCLCNP	VFQSTDTCYV
	LSFAVIMLNT	SLHNPVNRDK	PGLERFVAMN
	RGINEGGDLP	EELLRNLYDS	IRNEPFKIP
	DDGNDLTHTF	FNPDRGWLL	KLGGRVKTK
	RRWFILTDNC	LYYFEYTTDK	EPRGIIPLEN
	LSIREVDDPR	KPNCFELYIP	NNKGQLIKAC
	KTEADGRVVE	GNHMVYRISA	PTQEEKDEWI
	KSIQAAVSVD	PFYEMLAARK	KRISVKKKQE QP
予測される分子量	49 kDa including tags		
領域	1 to 399		
タグ	His tag N-Terminus		

特性

Our **Abpromise guarantee** covers the use of **ab134606** in the following tested applications.

The application notes include recommended starting dilutions; optimal dilutions/concentrations should be determined by the end user.

アプリケーション SDS-PAGE

Mass Spectrometry

質量分析

MALDI-TOF

製品の状態

Liquid

前処理および保存

保存方法および安定性

Shipped at 4°C. Store at +4°C short term (1-2 weeks). Upon delivery aliquot. Store at -20°C or -80°C. Avoid freeze / thaw cycle.

pH: 8.00

Constituents: 0.02% DTT, 0.32% Tris HCl, 10% Glycerol (glycerin, glycerine), 1.17% Sodium chloride

関連情報

機能

Acts as a guanine-nucleotide exchange factor (GEF). Promotes guanine-nucleotide exchange on ARF1, ARF3 and ARF6. Promotes the activation of ARF factors through replacement of GDP with GTP. The cell membrane form, in association with ARL4 proteins, recruits ARF6 to the plasma membrane.

組織特異性

Ubiquitous.

配列類似性

Contains 1 PH domain.

Contains 1 SEC7 domain.

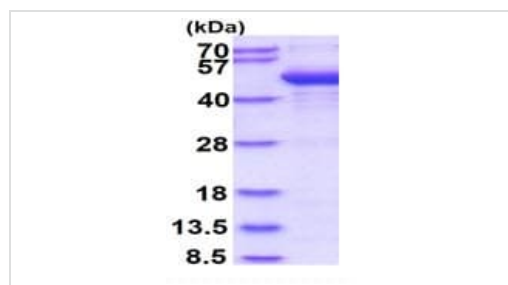
ドメイン

The PH domain is necessary and sufficient for plasma membrane relocalization.

細胞内局在

Cell membrane. Cytoplasm. Both isoform 1 and isoform 2 are recruited to the cell membrane through its association with ARL4A, ARL4C and ARL4D. Requires also interaction with phosphoinositides for targeting to plasma membrane.

画像



15% SDS-PAGE analysis of ab134606 (3µg).

SDS-PAGE - Recombinant Human Cytohesin 2 protein (ab134606)

Please note: All products are "FOR RESEARCH USE ONLY. NOT FOR USE IN DIAGNOSTIC PROCEDURES"

Our Abpromise to you: Quality guaranteed and expert technical support

- Replacement or refund for products not performing as stated on the datasheet
- Valid for 12 months from date of delivery
- Response to your inquiry within 24 hours

- We provide support in Chinese, English, French, German, Japanese and Spanish
- Extensive multi-media technical resources to help you
- We investigate all quality concerns to ensure our products perform to the highest standards

If the product does not perform as described on this datasheet, we will offer a refund or replacement. For full details of the Abpromise, please visit <https://www.abcam.co.jp/abpromise> or contact our technical team.

Terms and conditions

- Guarantee only valid for products bought direct from Abcam or one of our authorized distributors