

# Recombinant Human Cyclin D1 protein ab85247

**1 References** [画像数 1](#)

### 製品の詳細

製品名	Recombinant Human Cyclin D1 protein
精製度	> 85 % Densitometry.
発現系	Escherichia coli
アクセッション番号	<b><u>NP_444284.1</u></b>
タンパク質長	Full length protein
Animal free	No
由来	Recombinant
生物種	Human
配列	MEHQLLCCEVETIRRAYPDANLLNDRVLRAMLKAEETCAPSV SYFKCVQK EVLPSMRKIVATWMLEVCEE QKCEEEVFPLAMNYLDRFLSLEPVKKSR LQLLGATCMFVASKMKETIPLTAEKLCIYTDNSIRPEELLQM ELLLVN KLKWNLAAMTPHDFIEHFLSKMPEAEENKQIIRKHAQTFVAL CATDVKFI SNPPSMVAAGSVVA AVQGLNLRSPNNFLSYRYLTRFLSRVIKCDPDCL RACQEQIEALLESLRQAQQNMDPKAAEEEEEEEEEE VDLACTPTDVRD VDI
領域	1 to 295
タグ	His tag N-Terminus , GST tag N-Terminus

### 特性

Our **Abpromise guarantee** covers the use of **ab85247** in the following tested applications.

The application notes include recommended starting dilutions; optimal dilutions/concentrations should be determined by the end user.

アプリケーション	SDS-PAGE
	Western blot
製品の状態	Liquid

### 前処理および保存

## 保存方法および安定性

Shipped on dry ice. Upon delivery aliquot and store at -80°C. Avoid freeze / thaw cycles.

pH: 7.50

Constituents: 0.00174% PMSF, 0.00385% DTT, 0.79% Tris HCl, 25% Glycerol (glycerin, glycerine), 0.87% Sodium chloride

## 関連情報

### 機能

Essential for the control of the cell cycle at the G1/S (start) transition.

### 関連疾患

Note=A chromosomal aberration involving CCND1 may be a cause of B-lymphocytic malignancy, particularly mantle-cell lymphoma (MCL). Translocation t(11;14)(q13;q32) with immunoglobulin gene regions. Activation of CCND1 may be oncogenic by directly altering progression through the cell cycle.

Note=A chromosomal aberration involving CCND1 may be a cause of parathyroid adenomas.

Translocation t(11;11)(q13;p15) with the parathyroid hormone (PTH) enhancer.

Defects in CCND1 are a cause of multiple myeloma (MM) [MIM:254500]. MM is a malignant tumor of plasma cells usually arising in the bone marrow and characterized by diffuse involvement of the skeletal system, hyperglobulinemia, Bence-Jones proteinuria and anemia. Complications of multiple myeloma are bone pain, hypercalcemia, renal failure and spinal cord compression. The aberrant antibodies that are produced lead to impaired humoral immunity and patients have a high prevalence of infection. Amyloidosis may develop in some patients. Multiple myeloma is part of a spectrum of diseases ranging from monoclonal gammopathy of unknown significance (MGUS) to plasma cell leukemia. Note=A chromosomal aberration involving CCND1 is found in multiple myeloma. Translocation t(11;14)(q13;q32) with the IgH locus.

### 配列類似性

Belongs to the cyclin family. Cyclin D subfamily.

### 翻訳後修飾

Phosphorylation at Thr-286 by MAP kinases is required for ubiquitination and degradation following DNA damage. It probably plays an essential role for recognition by the FBXO31 component of SCF (SKP1-cullin-F-box) protein ligase complex.

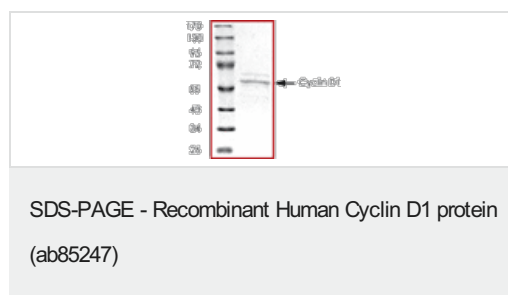
Ubiquitinated, primarily as 'Lys-48'-linked polyubiquitination. Ubiquitinated by a SCF (SKP1-CUL1-F-box protein) ubiquitin-protein ligase complex containing FBXO4 and CRYAB (By similarity). Following DNA damage it is ubiquitinated by some SCF (SKP1-cullin-F-box) protein ligase complex containing FBXO31. Ubiquitination leads to its degradation and G1 arrest.

Deubiquitinated by USP2; leading to stabilize it.

### 細胞内局在

Nucleus.

## 画像



**Please note:** All products are "FOR RESEARCH USE ONLY. NOT FOR USE IN DIAGNOSTIC PROCEDURES"

### **Our Abpromise to you: Quality guaranteed and expert technical support**

---

- Replacement or refund for products not performing as stated on the datasheet
- Valid for 12 months from date of delivery
- Response to your inquiry within 24 hours
  
- We provide support in Chinese, English, French, German, Japanese and Spanish
- Extensive multi-media technical resources to help you
- We investigate all quality concerns to ensure our products perform to the highest standards

If the product does not perform as described on this datasheet, we will offer a refund or replacement. For full details of the Abpromise, please visit <https://www.abcam.co.jp/abpromise> or contact our technical team.

### **Terms and conditions**

---

- Guarantee only valid for products bought direct from Abcam or one of our authorized distributors