

# Recombinant Human Cyclin B1 protein ab128445

**3 References** [画像数 1](#)

### 製品の詳細

<b>製品名</b>	Recombinant Human Cyclin B1 protein		
<b>精製度</b>	> 85 % SDS-PAGE. ab128445 was purified using conventional chromatography.		
<b>発現系</b>	Escherichia coli		
<b>アクセッション番号</b>	<b><u>P14635</u></b>		
<b>タンパク質長</b>	Full length protein		
<b>Animal free</b>	No		
<b>由来</b>	Recombinant		
<b>生物種</b>	Human		
<b>配列</b>	MGSSHHHHHH	SSGLVPRGSH	MGSHMALRVT RNSKINAENK AKINMAGAKR VPTAPAATSK PGLRPRTALG DIGNKVSEQL QAKMPMKKEA KPSATGKVID KKLPKPLEKV PMLVPVPVSE PVPEPEPEPE PEPVKEEKLS PEPILVDTAS PSPMETSGCA PAEEDLCQAF SDVILAVNDV DAEDGADPNL CSEYVKDIYA YLRQLEEEQA VRPKYLLGRE VTGNMRAILI DWLVQVQMKF RLQETMYMT VSIIDRFMQN NCVPPKMLQL VGVTAMFIAS KYEEMYPPEI GDFAFVTDNT YTKHQIRQME MKILRALNFG LGRPLPLHFL RRASKIGEVD VEQHTLAKYL MELTMLDYDM VHFPPSQIAA GAFCLALKIL DNGEWTPTLQ HYLSYTEESL LPVMQHLAKN VVMVNQGLTK HMTVKNKYAT SKHAKISTLP QLNSALVQDL AKAVAKV
<b>予測される分子量</b>	51 kDa including tags		
<b>領域</b>	1 to 433		
<b>タグ</b>	His tag N-Terminus		

### 特性

Our **Abpromise guarantee** covers the use of **ab128445** in the following tested applications.

The application notes include recommended starting dilutions; optimal dilutions/concentrations should be determined by the end user.

アプリケーション	SDS-PAGE
質量分析	MALDI-TOF
製品の状態	Liquid

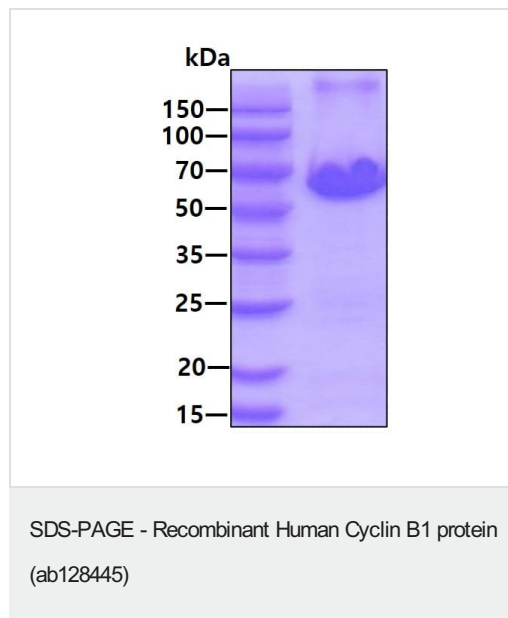
#### 前処理および保存

保存方法および安定性	Shipped at 4°C. Store at +4°C short term (1-2 weeks). Upon delivery aliquot. Store at -20°C or -80°C. Avoid freeze / thaw cycle. pH: 8.00 Constituents: 0.32% Tris HCl, 10% Glycerol (glycerin, glycerine), 0.88% Sodium chloride
------------	---

#### 関連情報

機能	Essential for the control of the cell cycle at the G2/M (mitosis) transition.
配列類似性	Belongs to the cyclin family. Cyclin AB subfamily.
発生段階	Accumulates steadily during G2 and is abruptly destroyed at mitosis.
翻訳後修飾	Ubiquitinated by the SCF(NIPA) complex during interphase, leading to its destruction. Not ubiquitinated during G2/M phases.
細胞内局在	Cytoplasm. Nucleus. Cytoplasm > cytoskeleton > centrosome.

#### 画像



SDS-PAGE analysis of ab128445 (3 µg) under reducing conditions and visualized by coomassie blue stain.

**Please note:** All products are "FOR RESEARCH USE ONLY. NOT FOR USE IN DIAGNOSTIC PROCEDURES"

#### Our Promise to you: Quality guaranteed and expert technical support

- Replacement or refund for products not performing as stated on the datasheet

- Valid for 12 months from date of delivery
- Response to your inquiry within 24 hours
  
- We provide support in Chinese, English, French, German, Japanese and Spanish
- Extensive multi-media technical resources to help you
- We investigate all quality concerns to ensure our products perform to the highest standards

If the product does not perform as described on this datasheet, we will offer a refund or replacement. For full details of the Abpromise, please visit <https://www.abcam.co.jp/abpromise> or contact our technical team.

### **Terms and conditions**

---

- Guarantee only valid for products bought direct from Abcam or one of our authorized distributors