

### Recombinant human CTLA4 protein (Active) ab167727

画像数 4

#### 製品の詳細

製品名	Recombinant human CTLA4 protein (Active)
生理活性	<p>Measured by its binding ability in a functional ELISA. Immobilized Human B7-1, Fc Tag (<b>ab173993</b>) at 2µg/mL (100 µL/well) can bind ab167727 with a linear range of 0.16-2.56 ng/mL.</p> <p>Measured by its binding ability in a functional ELISA. Immobilized Human B7-2, Fc Tag (<b>ab167720</b>) at 2µg/mL (100 µL/well) can bind ab167727 with a linear range of 1-6.4 ng/mL.</p> <p>Measured by its binding ability in an SPR assay. Yervoy (Ipilimumab, Human IgG1) captured on CM5 chip via anti-human IgG Fc antibodies surface, can bind ab167727 with an affinity constant of 25.7 nM.</p>
精製度	> 95 % SDS-PAGE.
エンドトキシン・レベル	< 1.000 Eu/µg
発現系	HEK 293 cells
アクセッション番号	<b>P16410</b>
タンパク質長	Protein fragment
Animal free	No
由来	Recombinant
生物種	Human
配列	AMHVAQPAVVLASSRGIASFVCEYASPGKATEVRVTVLRQAD SQVTEVCA ATYMMGNELTFLDDSICTGTSSGNQVNLTIQGLRAMDTGLYI CKVELMYP PPYYLGIGNGTQIYVIDPEPCPDSDF
予測される分子量	14 kDa including tags
領域	37 to 162
タグ	His tag C-Terminus

#### 特性

Our **Abpromise guarantee** covers the use of **ab167727** in the following tested applications.

The application notes include recommended starting dilutions; optimal dilutions/concentrations should be determined by the end user.

アプリケーション	Functional Studies
	ELISA

## SDS-PAGE

### 製品の状態

Lyophilized

### 前処理および保存

---

#### 保存方法および安定性

Shipped at 4°C. Store at +4°C short term (1-2 weeks). Upon delivery aliquot. Store at -20°C or -80°C. Avoid freeze / thaw cycle.

pH: 7.40

Constituent: 99% PBS

Lyophilized from 0.22 µm filtered solution.

5-10% trehalose is commonly used for freeze drying, and after reconstitution, the trehalose is mostly about 3-5%

This product is an active protein and may elicit a biological response in vivo, handle with caution.

#### 再構成

Reconstitute with sterile deionized water to a concentration of 200 µg/ml.

### 関連情報

---

#### 機能

Inhibitory receptor acting as a major negative regulator of T-cell responses. The affinity of CTLA4 for its natural B7 family ligands, CD80 and CD86, is considerably stronger than the affinity of their cognate stimulatory coreceptor CD28.

#### 組織特異性

Widely expressed with highest levels in lymphoid tissues. Detected in activated T-cells where expression levels are 30- to 50-fold less than CD28, the stimulatory coreceptor, on the cell surface following activation.

#### 関連疾患

Genetic variation in CTLA4 influences susceptibility to systemic lupus erythematosus (SLE) [MIM:152700]. SLE is a chronic, inflammatory and often febrile multisystemic disorder of connective tissue. It affects principally the skin, joints, kidneys and serosal membranes. SLE is thought to represent a failure of the regulatory mechanisms of the autoimmune system.

Note=Genetic variations in CTLA4 may influence susceptibility to Graves disease, an autoimmune disorder associated with overactivity of the thyroid gland and hyperthyroidism.

Genetic variation in CTLA4 is the cause of susceptibility to diabetes mellitus insulin-dependent type 12 (IDDM12) [MIM:601388]. A multifactorial disorder of glucose homeostasis that is characterized by susceptibility to ketoacidosis in the absence of insulin therapy. Clinical features are polydipsia, polyphagia and polyuria which result from hyperglycemia-induced osmotic diuresis and secondary thirst. These derangements result in long-term complications that affect the eyes, kidneys, nerves, and blood vessels.

Genetic variation in CTLA4 is the cause of susceptibility to celiac disease type 3 (CELIAC3) [MIM:609755]. It is a multifactorial disorder of the small intestine that is influenced by both environmental and genetic factors. It is characterized by malabsorption resulting from inflammatory injury to the mucosa of the small intestine after the ingestion of wheat gluten or related rye and barley proteins. In its classic form, celiac disease is characterized in children by malabsorption and failure to thrive.

#### 配列類似性

Contains 1 Ig-like V-type (immunoglobulin-like) domain.

#### 翻訳後修飾

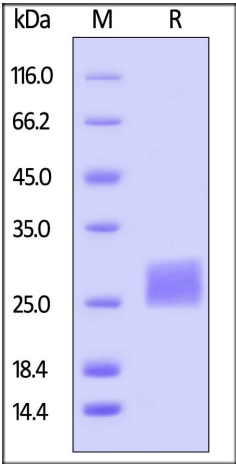
N-glycosylation is important for dimerization.

Phosphorylation at Tyr-201 prevents binding to the AP-2 adapter complex, blocks endocytosis, and leads to retention of CTLA4 on the cell surface.

細胞内局在

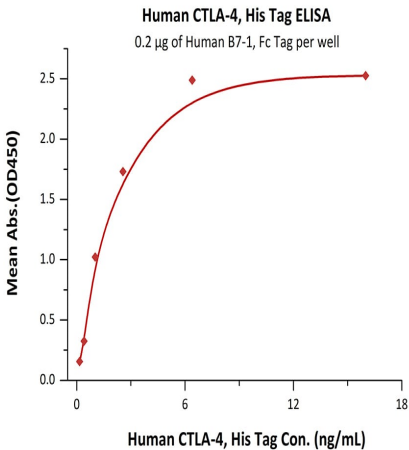
Cell membrane. Exists primarily an intracellular antigen whose surface expression is tightly regulated by restricted trafficking to the cell surface and rapid internalisation and.

画像



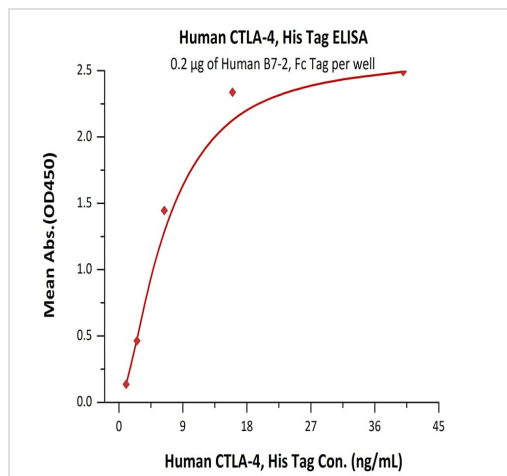
SDS-PAGE of reduced ab167727 stained overnight with Coomassie Blue. The protein migrates as 25-30 kDa under reducing conditions due to glycosylation.

SDS-PAGE - Recombinant Human CTLA4 protein (ab167727)



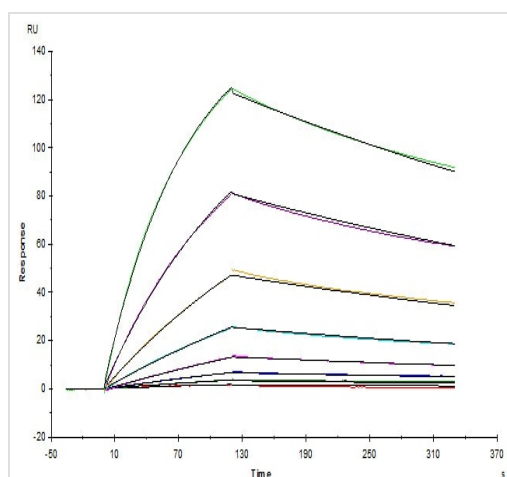
Immobilized Human B7-1, Fc Tag (**ab173993**) at 2µg/mL (100 µL/well) can bind ab167727 with a linear range of 0.16-2.56 ng/mL.

ELISA - Recombinant Human CTLA4 protein (ab167727)



ELISA - Recombinant Human CTLA4 protein  
(ab167727)

Immobilized Human B7-2, Fc Tag (**ab167720**) at 2µg/mL (100 µL/well) can bind ab167727 with a linear range of 1-6.4 ng/mL.



Functional Studies - Recombinant Human CTLA4  
protein (ab167727)

Yervoy (Ipilimumab, Human IgG1) captured on CM5 chip via anti-human IgG Fc antibodies surface, can bind ab167727 with an affinity constant of 25.7 nM as determined in SPR assay.

**Please note:** All products are "FOR RESEARCH USE ONLY. NOT FOR USE IN DIAGNOSTIC PROCEDURES"

**Our Abpromise to you: Quality guaranteed and expert technical support**

- Replacement or refund for products not performing as stated on the datasheet

- Valid for 12 months from date of delivery
- Response to your inquiry within 24 hours
- We provide support in Chinese, English, French, German, Japanese and Spanish
- Extensive multi-media technical resources to help you
- We investigate all quality concerns to ensure our products perform to the highest standards

If the product does not perform as described on this datasheet, we will offer a refund or replacement. For full details of the Abpromise, please visit <https://www.abcam.co.jp/abpromise> or contact our technical team.

#### **Terms and conditions**

---

- Guarantee only valid for products bought direct from Abcam or one of our authorized distributors