

Recombinant Human CSN2 protein (His tag) ab241234

画像数 1

製品の詳細

製品名	Recombinant Human CSN2 protein (His tag)
精製度	> 85 % SDS-PAGE.
発現系	Yeast
アクセッション番号	<u>P61201</u>
タンパク質長	Full length protein
Animal free	No
由来	Recombinant
生物種	Human
配列	MSDMEDDFMCDDEEDYDLEYSEDSNSEPNVDLENQYYNSKAL KEDDPKAA LSSFQKVLELEGEKGEWGFKALKQMIKINFKLTFPEMMNRY KQLLYIR SAVTRNYSEKSINSILDYISTSKQMDLLQEFYETTLEALKDA KNDRLWFK TNTKLGKLYLEREEYGKLGKILRQLHQSCQTDDGEDDLKKG QLLEIYAL EIQMYTAQKNNKKLALYEQSLHIKSAIPHPLIMGVIRECGG KMHLREGE FEKAHTDFFEAFKNYDESGSPRRTTCLKYLVLANMLMKSGIN PFDSQEAK PYKNDPEILAMTNLVSAYQNNDDITEFEKILKTNHSNIMDDPF IREHIEEL LRNIRTQVLIKLIKPYTRIHIPFISKELNIDVADVESLLVQC ILDNTIHG RIDQVNQLLELDHQKRGGARYTALDKWTNQLNSLNQAVVSKL A
予測される分子量	54 kDa including tags
領域	1 to 443
タグ	His tag N-Terminus

特性

Our **Abpromise guarantee** covers the use of **ab241234** in the following tested applications.

The application notes include recommended starting dilutions; optimal dilutions/concentrations should be determined by the end user.

アプリケーション	SDS-PAGE
製品の状態	Liquid
備考	This product was previously labelled as TRIP15

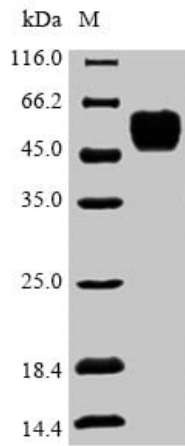
前処理および保存

保存方法および安定性	Shipped at 4°C. Store at -20°C or -80°C. Avoid freeze / thaw cycle. pH: 7.2 Constituents: Tris buffer, 50% Glycerol (glycerin, glycerine)
------------	---

関連情報

機能	Essential component of the COP9 signalosome complex (CSN), a complex involved in various cellular and developmental processes. The CSN complex is an essential regulator of the ubiquitin (Ubl) conjugation pathway by mediating the deneddylation of the cullin subunits of SCF-type E3 ligase complexes, leading to decrease the Ubl ligase activity of SCF-type complexes such as SCF, CSA or DDB2. The complex is also involved in phosphorylation of p53/TP53, c-jun/JUN, IκappaBα/NFKBIA, ITPK1 and IRF8/ICSBP, possibly via its association with CK2 and PKD kinases. CSN-dependent phosphorylation of TP53 and JUN promotes and protects degradation by the Ubl system, respectively. Involved in early stage of neuronal differentiation via its interaction with NIF3L1.
配列類似性	Belongs to the CSN2 family. Contains 1 PCI domain.
翻訳後修飾	Phosphorylated by CK2 and PKD kinases.
細胞内局在	Cytoplasm. Nucleus.

画像



Analysis of ab241234 by (Tris-Glycine gel) Discontinuous SDS-PAGE (reduced) with 5% enrichment gel and 15% separation gel.

SDS-PAGE - Recombinant Human CSN2 protein
(His tag) (ab241234)

Please note: All products are "FOR RESEARCH USE ONLY. NOT FOR USE IN DIAGNOSTIC PROCEDURES"

Our Abpromise to you: Quality guaranteed and expert technical support

- Replacement or refund for products not performing as stated on the datasheet
- Valid for 12 months from date of delivery
- Response to your inquiry within 24 hours
- We provide support in Chinese, English, French, German, Japanese and Spanish
- Extensive multi-media technical resources to help you
- We investigate all quality concerns to ensure our products perform to the highest standards

If the product does not perform as described on this datasheet, we will offer a refund or replacement. For full details of the Abpromise, please visit <https://www.abcam.co.jp/abpromise> or contact our technical team.

Terms and conditions

- Guarantee only valid for products bought direct from Abcam or one of our authorized distributors