

Recombinant human Cocksackie Adenovirus Receptor/hCAR protein (His tag) ab168893

1 References 画像数 1

製品の詳細

|             |   |  |
|-------------|---|--|
| 製品名         | Recombinant human Cocksackie Adenovirus Receptor/hCAR protein (His tag)   |  |
| 生理活性        | Measured by the ability of immobilized ab168893 to support the adhesion of mouse neutrophils. When 50000 cells/well are added to Cocksackie Adenovirus Receptor coated plates (4 µg/mL and 100 µL/well ), approximately 20% - 50% will adhere specifically after 60 minutes at 37?. |  |
| 精製度         | > 95 % SDS-PAGE.  |  |
| エンドトキシン・レベル | < 1.000 Eu/µg   |  |
| 発現系         | HEK 293 cells   |  |
| アクセッション番号   | <b>P78310</b>   |  |
| タンパク質長      | Protein fragment  |  |
| Animal free | No  |  |
| 由来          | Recombinant   |  |
| 生物種         | Human   |  |
| 配列          | LSITTPEEMIEKAKGETAYLPCKFTLSPEDQGPLDIEWLISP<br>ADNQKVDQ VIILYSGDKI<br>YDDYYPDLKGRVHFTSNDLKSGDASINVTNLQLSDIGT<br>YQCKVKKAPGVANKKIHLVVLV<br>KPSGARCYPDGSEEIGSDFKIKCEPK<br>EGSLPLQYEWQKLSDSQKMPTSWLAEMTSSVISV<br>KNASSEYSGTYSCT VRNRVGSDQCLLRNLNVVPPSNKAG                               |  |
| 予測される分子量    | 25 kDa including tags   |  |
| 領域          | 20 to 237   |  |
| タグ          | His tag C-Terminus  |  |

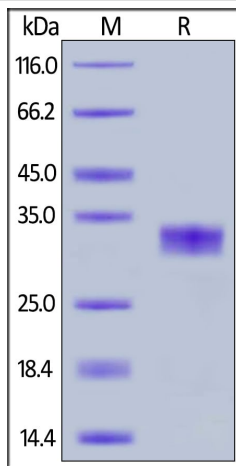
特性

Our **Abpromise guarantee** covers the use of **ab168893** in the following tested applications.

The application notes include recommended starting dilutions; optimal dilutions/concentrations should be determined by the end user.

|          |                    |
|----------|--------------------|
| アプリケーション | Functional Studies |
|          | SDS-PAGE           |

|            |   |
|------------|---|
| 製品の状態      | Lyophilized   |
| 備考         | This product was previously labelled as Coxsackie Adenovirus Receptor   |
| 前処理および保存   |   |
| 保存方法および安定性 | <p>Shipped at 4°C. Store at 4°C (stable for up to 12 months). Store at -20°C or -80°C.</p> <p>pH: 7.40</p> <p>Constituent: 95% PBS</p> <p>Lyophilized from 0.22 µm filtered solution. 5-10% trehalose is commonly used for freeze drying, and after reconstitution, the trehalose is mostly about 3-5%</p> <p>This product is an active protein and may elicit a biological response in vivo, handle with caution.</p>  |
| 再構成        | <p>It is recommended to reconstitute the lyophilized protein in sterile deionized water to a final concentration of 400 µg/ml. Solubilize for 30 to 60 minutes at room temperature with occasional gentle mixing. Carrier protein (0.1% HSA or BSA) is strongly recommended for further dilution and long term storage</p>  |
| 関連情報       |   |
| 機能         | <p>Component of the epithelial apical junction complex that is essential for the tight junction integrity. Proposed to function as a homophilic cell adhesion molecule. Recruits MPDZ to intercellular contact sites. Probably involved in transepithelial migration of polymorphonuclear leukocytes (PMN) through adhesive interactions with AMICA1/JAML located in the plasma membrane of PMN.</p>  |
| 組織特異性      | <p>Expressed in pancreas, brain, heart, small intestine, testis, prostate and at a lower level in liver and lung. Isoform 5 is ubiquitously expressed. Isoform 3 is expressed in heart, lung and pancreas. In skeletal muscle, isoform 1 is found at the neuromuscular junction and isoform 2 is found in blood vessels. In cardiac muscle, isoform 1 and isoform 2 are found at intercalated disks. In heart expressed in subendothelial layers of the vessel wall but not in the luminal endothelial surface. Expression is elevated in hearts with dilated cardiomyopathy.</p> |
| 配列類似性      | Contains 2 Ig-like C2-type (immunoglobulin-like) domains.   |
| ドメイン       | <p>The Ig-like C2-type 1 domain probably mediates homodimerization and interaction with JAML. The PDZ-binding motif mediates interaction with MPDZ and BAIAP1.</p>  |
| 翻訳後修飾      | <p>N-glycosylated.</p> <p>Palmitoylated on Cys-259 and/or Cys-260; required for proper localization to the plasma membrane.</p>   |
| 細胞内局在      | <p>Secreted and Cell membrane. Cell junction &gt; tight junction. Cell junction &gt; adherens junction. Basolateral cell membrane. In epithelial cells localizes to the apical junction complex composed of tight and adherens junctions. In airway epithelial cells localized to basolateral membrane but not to apical surface.</p>   |
| 画像         |   |



SDS-PAGE analysis of ab168893. Stained overnight with Coomassie Blue.

SDS-PAGE - Recombinant human Coxsackie Adenovirus Receptor/hCAR protein (ab168893)

**Please note:** All products are "FOR RESEARCH USE ONLY. NOT FOR USE IN DIAGNOSTIC PROCEDURES"

### Our Abpromise to you: Quality guaranteed and expert technical support

- Replacement or refund for products not performing as stated on the datasheet
- Valid for 12 months from date of delivery
- Response to your inquiry within 24 hours
- We provide support in Chinese, English, French, German, Japanese and Spanish
- Extensive multi-media technical resources to help you
- We investigate all quality concerns to ensure our products perform to the highest standards

If the product does not perform as described on this datasheet, we will offer a refund or replacement. For full details of the Abpromise, please visit <https://www.abcam.co.jp/abpromise> or contact our technical team.

### Terms and conditions

- Guarantee only valid for products bought direct from Abcam or one of our authorized distributors