

Recombinant Human Contactin 6 protein ab109345

画像数 1

製品の詳細

製品名	Recombinant Human Contactin 6 protein
生理活性	Induces Hes-1 in 3T3L-1 cells.
精製度	> 90 % SDS-PAGE. ab109345 is an 0.2 µm filtered solution.
エンドトキシン・レベル	< 0.100 Eu/µg
発現系	HEK 293 cells
アクセッション番号	<u>Q9UQ52</u>
タンパク質長	Full length protein
Animal free	No
由来	Recombinant
生物種	Human
予測される分子量	150 kDa including tags
領域	1 to 999

特性

Our **Abpromise guarantee** covers the use of **ab109345** in the following tested applications.

The application notes include recommended starting dilutions; optimal dilutions/concentrations should be determined by the end user.

アプリケーション	SDS-PAGE Functional Studies
製品の状態	Liquid
備考	Induces Hes-1 in 3T3L-1 cells.

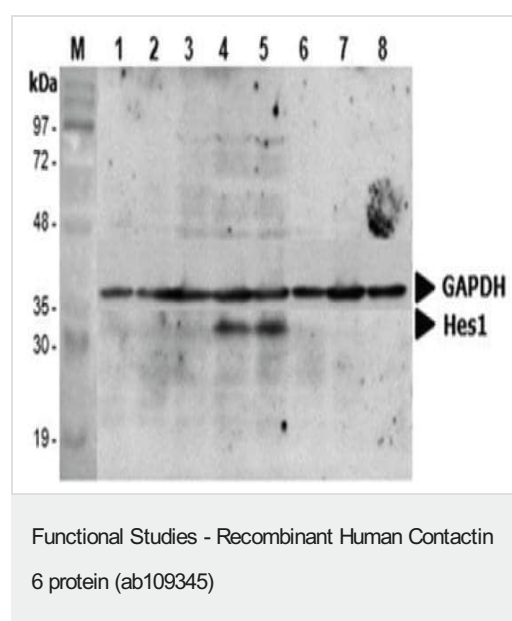
前処理および保存

保存方法および安定性	Shipped at 4°C. Upon delivery aliquot and store at -20°C. Avoid repeated freeze / thaw cycles. Constituent: PBS
------------	--

関連情報

機能	Contactins mediate cell surface interactions during nervous system development. Participates in oligodendrocytes generation by acting as a ligand of NOTCH1. Its association with NOTCH1 promotes NOTCH1 activation through the released notch intracellular domain (NICD) and subsequent translocation to the nucleus. Involved in motor coordination.
組織特異性	Expressed in nervous system. Highly expressed in cerebellum. Expressed at intermediate level in thalamus, subthalamic nucleus. Weakly expressed in corpus callosum, caudate nucleus and spinal cord.
配列類似性	Belongs to the immunoglobulin superfamily. Contactin family. Contains 4 fibronectin type-III domains. Contains 6 Ig-like C2-type (immunoglobulin-like) domains.
細胞内局在	Cell membrane.

画像



Induction of Hes-1 with the treatment of hContactin-6-Fc.

A Mouse preadipocyte cell line, 3T3L1, was stimulated with 5 µg/ml of ab109345 as in indicated time points and each cell lysate was prepared and subjected to Western blot by using anti-Mouse Hes-1 or GAPDH (loading control).

Lane M: Marker

Lane 1: ab109345, 0 minutes

Lane 2: ab109345, 10 minutes

Lane 3: ab109345, 30 minutes

Lane 4: ab109345, 1 h

Lane 5: ab109345, 2 h

Lane 6: ab109345, 4 h

Lane 7: ab109345, 8 h

Lane 8: ab109345, 24 h

Please note: All products are "FOR RESEARCH USE ONLY. NOT FOR USE IN DIAGNOSTIC PROCEDURES"

Our Abpromise to you: Quality guaranteed and expert technical support

- Replacement or refund for products not performing as stated on the datasheet
- Valid for 12 months from date of delivery
- Response to your inquiry within 24 hours
- We provide support in Chinese, English, French, German, Japanese and Spanish
- Extensive multi-media technical resources to help you
- We investigate all quality concerns to ensure our products perform to the highest standards

If the product does not perform as described on this datasheet, we will offer a refund or replacement. For full details of the Abpromise, please visit <https://www.abcam.co.jp/abpromise> or contact our technical team.

Terms and conditions

- Guarantee only valid for products bought direct from Abcam or one of our authorized distributors