

Recombinant Human CLLD8/SETDB2 protein ab169554

[1 References](#) [画像数 1](#)

製品の詳細

| | |
|-------------|---|
| 製品名 | Recombinant Human CLLD8/SETDB2 protein |
| 精製度 | > 80 % Densitometry. Affinity purified. |
| 発現系 | Baculovirus infected Sf9 cells |
| アクセッション番号 | <u>Q96T68</u> |
| タンパク質長 | Full length protein |
| Animal free | No |
| 由来 | Recombinant |
| 生物種 | Human |
| 配列 | MGEKNGDAKTFWMELEDDGKVDIFIFEQVQNVLQSLKQKIKDG SATNKEYI QAMILVNEATIINSSTSIKDPMPVTQKEQENKSNAPSTSCE NSFPEDCT FLTTGNKEILSLEDKVVDFREKDSSSNLSYQSHDCSGACLMK MPLNLKGE NPLQLPIKCHFQRRHAKTNSHSSALHVSYKTPCGRSLRNVEE VFRYLLET ECNFLFTDNFSFNTYVQLARNYPKQKEVVSVDISNGVESVP ISFCNEID SRKLPQFKYRKTWVPRAYNLTNFSSMFTDSCDCSEGCIDITK CACLQLTA RNAKTSPLSSDKITTYKYKRLQRQIPTGIYECSLLCKCNRQ LCQNRVVQ HGPQVRLQVFKTEQKGWVRCRDDIDRGTFCIYSGRLLSRA NTEKSYGI DENGRDENTMKNIFSKRRKLEVACSDCEVEVLPLGLETHPRT AKTEKCPP KFSNNPKELTMETKYDNISRIQYHSVIRDPEKTAIFQHNGK KMEFVSSE SVTPEDNDGFKPPREHLNSKTKGAQKDSSSNHVDEFEDNLLI ESDVIDIT KYREETPPSRCNQATTLDNQNIKKAIEVQIQKPQEGRSTAC QRQQVFC EELLSETKNTSSDSLTKFNKGNVFLLDATKEGNVGRFLNHSC |

CPNLLVQN
VFEVETHNRNFPLVAFFTNRYVKARTELTWDYGYEAGTVPEKE
IFCQCGVN KCRKKIL

予測される分子量 120 kDa including tags
領域 1 to 719
タグ GST tag N-Terminus

特性

Our **Abpromise guarantee** covers the use of **ab169554** in the following tested applications.

The application notes include recommended starting dilutions; optimal dilutions/concentrations should be determined by the end user.

アプリケーション SDS-PAGE

製品の状態 Liquid

前処理および保存

保存方法および安定性 Shipped on dry ice. Upon delivery aliquot and store at -80°C. Avoid freeze / thaw cycles.

pH: 7.50

Constituents: 0.31% Glutathione, 0.002% PMSF, 0.004% DTT, 0.79% Tris HCl, 0.003% EDTA, 25% Glycerol (glycerin, glycerine), 0.88% Sodium chloride

関連情報

機能 Histone methyltransferase involved in left-right axis specification in early development and mitosis. Specifically trimethylates 'Lys-9' of histone H3 (H3K9me3). H3K9me3 is a specific tag for epigenetic transcriptional repression that recruits HP1 (CBX1, CBX3 and/or CBX5) proteins to methylated histones. Contributes to H3K9me3 in both the interspersed repetitive elements and centromere-associated repeats. Plays a role in chromosome condensation and segregation during mitosis.

組織特異性 Ubiquitous. Highest expression in heart, testis and ovary.

配列類似性 Belongs to the histone-lysine methyltransferase family.

Contains 1 MBD (methyl-CpG-binding) domain.

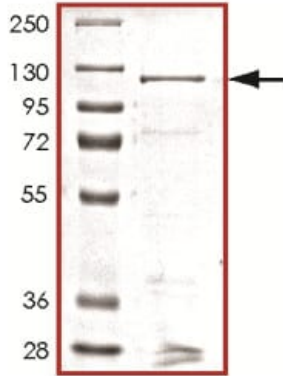
Contains 1 pre-SET domain.

Contains 1 SET domain.

細胞内局在 Nucleus. Chromosome.

画像

SDS-PAGE analysis of ab169554.



SDS-PAGE - Recombinant Human CLLD8/SETDB2 protein (ab169554)

Please note: All products are "FOR RESEARCH USE ONLY. NOT FOR USE IN DIAGNOSTIC PROCEDURES"

Our Abpromise to you: Quality guaranteed and expert technical support

- Replacement or refund for products not performing as stated on the datasheet
- Valid for 12 months from date of delivery
- Response to your inquiry within 24 hours
- We provide support in Chinese, English, French, German, Japanese and Spanish
- Extensive multi-media technical resources to help you
- We investigate all quality concerns to ensure our products perform to the highest standards

If the product does not perform as described on this datasheet, we will offer a refund or replacement. For full details of the Abpromise, please visit <https://www.abcam.co.jp/abpromise> or contact our technical team.

Terms and conditions

- Guarantee only valid for products bought direct from Abcam or one of our authorized distributors