

Recombinant human CDK3 + CCNE1 protein ab85643

画像数 4

製品の詳細

製品名	Recombinant human CDK3 + CCNE1 protein
生理活性	The Specific activity of ab85643 was determined to be 20 nmol/min/mg.
精製度	> 90 % SDS-PAGE. Purity was determined to be >90% by densitometry. Affinity purified.
発現系	Baculovirus infected Sf9 cells
タンパク質長	Full length protein
Animal free	No
由来	Recombinant
生物種	Human

特性

Our **Abpromise guarantee** covers the use of **ab85643** in the following tested applications.

The application notes include recommended starting dilutions; optimal dilutions/concentrations should be determined by the end user.

アプリケーション	Western blot Functional Studies SDS-PAGE
製品の状態	Liquid
備考	ab89813 (Histone H1 protein) can be utilized as a substrate for assessing kinase activity

前処理および保存

保存方法および安定性	Shipped on dry ice. Upon delivery aliquot and store at -80°C. Avoid freeze / thaw cycles. pH: 7.50 Constituents: 0.0038% EGTA, 0.00174% PMSF, 0.00385% DTT, 0.79% Tris HCl, 0.00292% EDTA, 25% Glycerol (glycerin, glycerine), 0.87% Sodium chloride This product is an active protein and may elicit a biological response in vivo, handle with caution.
------------	--

関連情報

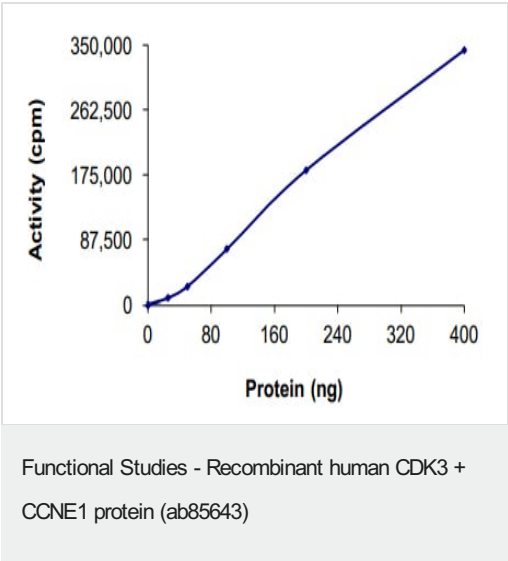
関連性

CDK3 is a member of the cyclin-dependent protein kinase family. The protein promotes entry into S phase, in part by activating members of the E2F family of transcription factors. The protein also associates with cyclin C and phosphorylates the retinoblastoma 1 protein to promote exit from G0. CCNE1 (Cyclin E) is a regulatory subunit of Cdk2 and controls G1 / S transition during the mammalian cell cycle. Multiple isoforms of Cyclin E are only expressed in tumors but not in normal tissue, suggesting a post transcriptional regulation of Cyclin E. In vitro analyses indicated that these truncated variant isoforms of Cyclin E are able to phosphorylate histone H1. Alterations in the Cyclin E protein have been implicated as indicators of worse prognosis in various cancers.

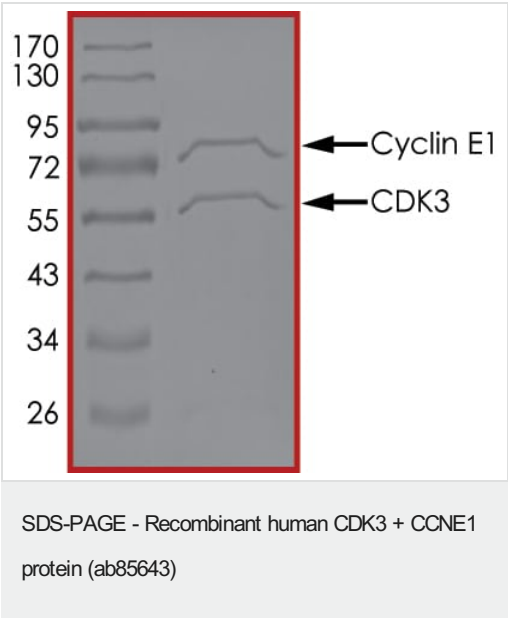
細胞内局在

CCNE1: Nuclear

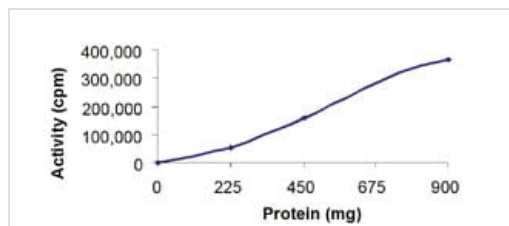
画像



The specific activity of CDK3 + CCNE1 (ab85643) was determined to be 23 nmol/min/mg as per activity assay protocol

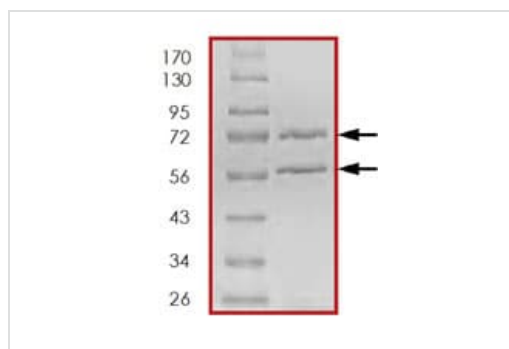


SDS PAGE analysis of ab85643



The Specific activity of ab85643 was determined to be 20 nmol/min/mg.

Functional Studies - Recombinant human CDK3 + CCNE1 protein (ab85643)



SDS-PAGE showing ab85643 at approximately 60kDa (CDK3) and 73kDa (CCNE1).

SDS-PAGE - Recombinant human CDK3 + CCNE1 protein (ab85643)

Please note: All products are "FOR RESEARCH USE ONLY. NOT FOR USE IN DIAGNOSTIC PROCEDURES"

Our Abpromise to you: Quality guaranteed and expert technical support

- Replacement or refund for products not performing as stated on the datasheet
- Valid for 12 months from date of delivery
- Response to your inquiry within 24 hours
- We provide support in Chinese, English, French, German, Japanese and Spanish
- Extensive multi-media technical resources to help you
- We investigate all quality concerns to ensure our products perform to the highest standards

If the product does not perform as described on this datasheet, we will offer a refund or replacement. For full details of the Abpromise, please visit <https://www.abcam.co.jp/abpromise> or contact our technical team.

Terms and conditions

- Guarantee only valid for products bought direct from Abcam or one of our authorized distributors