

Recombinant human CD55 protein ab168708

2 References [画像数 1](#)

製品の詳細

製品名	Recombinant human CD55 protein
生理活性	Bioactivity: Measured by binding ability in a functional ELISA. When ab168708 is coated at 1 µg/mL (100 µL/well), the concentration of recombinant Human CD97 that produces 50% of the optimal binding response is found to be approximately 0.15-2.0 µg/mL.
精製度	> 95 % SDS-PAGE.
エンドキシン・レベル	< 1.000 Eu/µg
発現系	HEK 293 cells
アクセッション番号	P08174
タンパク質長	Full length protein
Animal free	No
由来	Recombinant
生物種	Human
配列	DCGLPPDVPNAQPALEGRTSFPEDTVITYKCEESFVKIPGEK DSVICLKG SQWSDIEEFC NRSCEVPTRLNSASLKQPYITQNYFPVGTVVEYECRPGYRRE PSLSPKLT CLQNLKWSTA VEFCKKSCPNPGEIRNGQIDVPGGILFGATISFSCNTGYKL FGSTSSFC LISGSSVQWS DPLPECREIYCPAPPQIDNGIIQGERDHYGYRQSVTYACNKG FTMIGEHS IYCTVNNDEG EWSGPPPECRGKSLTSKVPPTVQKPTTVNVPTTEVSPTSQKT TTKTTTPN AQATRSTPVS RTTKHFHETTPNKGSGTTS
予測される分子量	36 kDa including tags
領域	35 to 353
タグ	His tag C-Terminus

特性

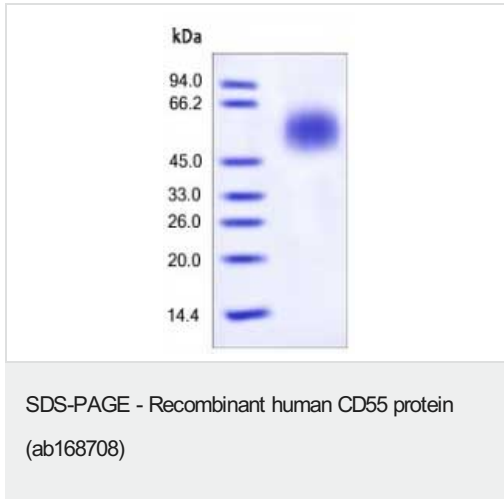
Our **Abpromise guarantee** covers the use of **ab168708** in the following tested applications.

The application notes include recommended starting dilutions; optimal dilutions/concentrations should be determined by the end user.

アプリケーション SDS-PAGE

	ELISA
製品の状態	Lyophilized
前処理および保存	
保存方法および安定性	<p>Shipped at 4°C. Store at +4°C short term (1-2 weeks). Upon delivery aliquot. Store at -20°C or -80°C. Avoid freeze / thaw cycle.</p> <p>pH: 7.40 Constituent: PBS</p> <p>5-10% trehalose is commonly used for freeze drying, and after reconstitution, the trehalose is mostly about 3-5%</p> <p>This product is an active protein and may elicit a biological response in vivo, handle with caution.</p>
再構成	Reconstitute with sterile deionized water to a concentration of 200 µg/ml.
関連情報	
機能	This protein recognizes C4b and C3b fragments that condense with cell-surface hydroxyl or amino groups when nascent C4b and C3b are locally generated during C4 and c3 activation. Interaction of daf with cell-associated C4b and C3b polypeptides interferes with their ability to catalyze the conversion of C2 and factor B to enzymatically active C2a and Bb and thereby prevents the formation of C4b2a and C3bBb, the amplification convertases of the complement cascade.
組織特異性	Expressed on the plasma membranes of all cell types that are in intimate contact with plasma complement proteins. It is also found on the surfaces of epithelial cells lining extracellular compartments, and variants of the molecule are present in body fluids and in extracellular matrix.
配列類似性	Belongs to the receptors of complement activation (RCA) family. Contains 4 Sushi (CCP/SCR) domains.
ドメイン	The first Sushi domain (SCR1) is not necessary for function. SCR2 and SCR4 provide the proper conformation for the active site on SCR3.
翻訳後修飾	The Ser/Thr-rich domain is heavily O-glycosylated.
細胞内局在	Cell membrane.

画像



The purity of ab168708 was determined by SDS-PAGE of reduced CD55 and staining overnight with Coomassie Blue

Please note: All products are "FOR RESEARCH USE ONLY. NOT FOR USE IN DIAGNOSTIC PROCEDURES"

Our Abpromise to you: Quality guaranteed and expert technical support

- Replacement or refund for products not performing as stated on the datasheet
- Valid for 12 months from date of delivery
- Response to your inquiry within 24 hours
- We provide support in Chinese, English, French, German, Japanese and Spanish
- Extensive multi-media technical resources to help you
- We investigate all quality concerns to ensure our products perform to the highest standards

If the product does not perform as described on this datasheet, we will offer a refund or replacement. For full details of the Abpromise, please visit <https://www.abcam.co.jp/abpromise> or contact our technical team.

Terms and conditions

- Guarantee only valid for products bought direct from Abcam or one of our authorized distributors