

Recombinant Human CD47 protein (His tag) ab219233

画像数 1

製品の詳細

製品名	Recombinant Human CD47 protein (His tag)	
精製度	> 95 % SDS-PAGE. Affinity purified	
エンドトキシン・レベル	< 1.000 Eu/μg	
発現系	Baculovirus infected insect cells	
アクセッション番号	<u>Q08722</u>	
タンパク質長	Protein fragment	
Animal free	No	
由来	Recombinant	
生物種	Human	
配列	QLLFNKTKSVEFTFCNDTVVIPCFTVNMEAQNTTEVYVKWKF KGRDIYTF DGALNKSTVPTDFSSAKIEVSQLLKGDASLKMDKSDAVSHTG NYTCEVTE LTREGETIIELKYRVVSWFSPNELEPKSCDKTHTCPPCPAPE LLGGPSVF LFPPKPKDTLMISRTPEVTCVVVDVSHEDPEVKFNWYVDGVE VHNAKTKP REEQYNSTYRVVSVLTVLHQDWLNGKEYKCKVSNKALPAPIE KTISKAKG QPREPQVYTLPPSRDELTKNQVSLTCLVKGFYPSDIAVEWES NGQPENNY KTTTPVLDSGDGSFFLYSKLTVDKSRWQQGNVFSCSVMEALH NHYTQKSL SLSPGKHHHHHH	
予測される分子量	41 kDa including tags	
領域	19 to 141	
タグ	His tag C-Terminus	
配列の追加情報	C-terminal Human IgG His tag. NCBI Accession No. NP_001768.	

特性

Our **Abpromise guarantee** covers the use of **ab219233** in the following tested applications.

The application notes include recommended starting dilutions; optimal dilutions/concentrations should be determined by the end user.

アプリケーション

SDS-PAGE

製品の状態

Liquid

前処理および保存

保存方法および安定性

Shipped at 4°C. Store at +4°C short term (1-2 weeks). Upon delivery aliquot. Store at -20°C or -80°C. Avoid freeze / thaw cycle.

pH: 7.40

Constituents: 90% PBS, 10% Glycerol (glycerin, glycerine)

関連情報

機能

Has a role in both cell adhesion by acting as an adhesion receptor for THBS1 on platelets, and in the modulation of integrins. Plays an important role in memory formation and synaptic plasticity in the hippocampus (By similarity). Receptor for SIRPA, binding to which prevents maturation of immature dendritic cells and inhibits cytokine production by mature dendritic cells. Interaction with SIRPG mediates cell-cell adhesion, enhances superantigen-dependent T-cell-mediated proliferation and costimulates T-cell activation. May play a role in membrane transport and/or integrin dependent signal transduction. May prevent premature elimination of red blood cells. May be involved in membrane permeability changes induced following virus infection.

組織特異性

Very broadly distributed on normal adult tissues, as well as ovarian tumors, being especially abundant in some epithelia and the brain.

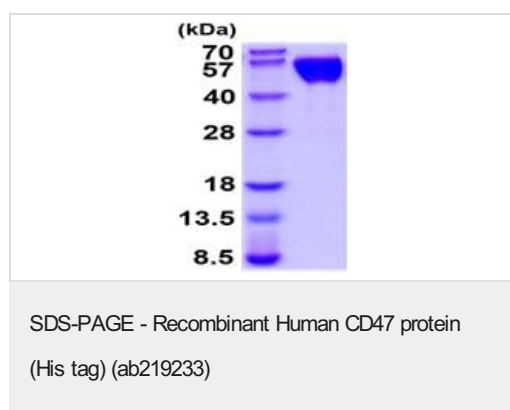
配列類似性

Contains 1 Ig-like V-type (immunoglobulin-like) domain.

細胞内局在

Cell membrane.

画像



15% SDS-PAGE analysis of ab219233 (3 µg).

Please note: All products are "FOR RESEARCH USE ONLY. NOT FOR USE IN DIAGNOSTIC PROCEDURES"

Our Abpromise to you: Quality guaranteed and expert technical support

- Replacement or refund for products not performing as stated on the datasheet

- Valid for 12 months from date of delivery
- Response to your inquiry within 24 hours
- We provide support in Chinese, English, French, German, Japanese and Spanish
- Extensive multi-media technical resources to help you
- We investigate all quality concerns to ensure our products perform to the highest standards

If the product does not perform as described on this datasheet, we will offer a refund or replacement. For full details of the Abpromise, please visit <https://www.abcam.co.jp/abpromise> or contact our technical team.

Terms and conditions

- Guarantee only valid for products bought direct from Abcam or one of our authorized distributors