

Recombinant Human CD38 protein (Tagged) ab267957

画像数 1

製品の詳細

製品名	Recombinant Human CD38 protein (Tagged)		
精製度	> 85 % SDS-PAGE.		
発現系	Mammalian		
アクセッション番号	<b><u>P28907</u></b>		
タンパク質長	Protein fragment		
Animal free	No		
由来	Recombinant		
生物種	Human		
配列	VPRWRQQWSGPGTTKRFPETVLARCVKYTEIHPEMRHVDCQS VWDAFKGA FISKHPCNITEEDYQPLMKLGTQTVPCNKILLWSRIKDLAHQ FTQVQRDM FTLEDTLLGYLADDLTWCGEFNTSKINYQSCPDWRKDCSNNP VSVFWKTV SRRFAEAACDVVHVMLNGSRSKI FDKNSTFGSVEVHNLQPEK VQTLEAWV IHGGREDSRDLCQDPTIKELESIISKRN IQFSCKNIYRPDKF LQCVKNPE DSSCTSEI		
予測される分子量	34 kDa		
実際の分子量	57 kDa		
領域	43 to 300		
タグ	Fc tag C-Terminus		
配列の追加情報	Extracellular Domain		

特性

Our <b><u>Abpromise guarantee</u></b> covers the use of <b>ab267957</b> in the following tested applications.	
The application notes include recommended starting dilutions; optimal dilutions/concentrations should be determined by the end user.	
アプリケーション	SDS-PAGE
製品の状態	Liquid

## 前処理および保存

### 保存方法および安定性

Shipped at 4°C. Store at +4°C short term (1-2 weeks). Upon delivery aliquot. Store at -20°C or -80°C. Avoid freeze / thaw cycle.

Constituents: PBS, 6% Trehalose

Lyophilized from.

## 関連情報

### 機能

Synthesizes cyclic ADP-ribose, a second messenger for glucose-induced insulin secretion. Also has cADPr hydrolase activity. Also moonlights as a receptor in cells of the immune system.

### 組織特異性

Expressed at high levels in pancreas, liver, kidney, brain, testis, ovary, placenta, malignant lymphoma and neuroblastoma.

### 配列類似性

Belongs to the ADP-ribosyl cyclase family.

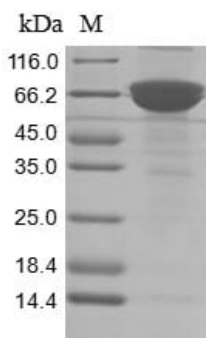
### 発生段階

Preferentially expressed at both early and late stages of the B and T-cell maturation. It is also detected on erythroid and myeloid progenitors in bone marrow, where the level of surface expression was shown to decrease during differentiation of blast-forming unit E to colony-forming unit E.

### 細胞内局在

Membrane.

## 画像



SDS-PAGE analysis of Recombinant Human CD38 protein  
(Tagged) (ab267957)

SDS-PAGE - Recombinant Human CD38 protein  
(Tagged) (ab267957)

**Please note:** All products are "FOR RESEARCH USE ONLY. NOT FOR USE IN DIAGNOSTIC PROCEDURES"

## Our Abpromise to you: Quality guaranteed and expert technical support

- Replacement or refund for products not performing as stated on the datasheet
- Valid for 12 months from date of delivery
- Response to your inquiry within 24 hours

- We provide support in Chinese, English, French, German, Japanese and Spanish
- Extensive multi-media technical resources to help you
- We investigate all quality concerns to ensure our products perform to the highest standards

If the product does not perform as described on this datasheet, we will offer a refund or replacement. For full details of the Abpromise, please visit <https://www.abcam.co.jp/abpromise> or contact our technical team.

#### **Terms and conditions**

---

- Guarantee only valid for products bought direct from Abcam or one of our authorized distributors