

Recombinant human CD226 protein (Active) (Biotin) ab271541

画像数 2

製品の詳細

製品名	Recombinant human CD226 protein (Active) (Biotin)
生理活性	CD226, biotin binding to CD155. Briefly, 6 ng of CD226-biotin was mixed with varying amounts of CD155, His-tag in CD226 assay buffer at a final volume of 10 µL and allowed to incubate for 1 hr at room temp. Nickle acceptor beads were added for 30 mins, followed by Strep-conjugated acceptor beads for 30 mins and reading alpha-counts.
精製度	>= 90 % SDS-PAGE.
発現系	HEK 293 cells
アクセッション番号	<u>Q15762</u>
タンパク質長	Protein fragment
Animal free	No
由来	Recombinant
生物種	Human
配列	EEVLWHTSVPFAENMSLECVYPSMGILTQVEWFKIGTQQDSI AIFSPTHG MVIRKPYAERVYFLNSTMASNNMTLFFRNASEDDVGYYSCSL YTYPQGTW QKVIQVVQSDSFEAAVPSNSHIVSEPGKNVTLTQCQMTWPV QAVRWEKI QPRQIDLLTYCNLVHGRNFTSKFPRQIVSNCSHGRWSVIVIP DVTVSDSG LYRCYLQASAGENETFVMRLTVAEGKTDN
予測される分子量	55 kDa
領域	19 to 247
タグ	Avi tag C-Terminus , Fc tag C-Terminus
配列の追加情報	Fc portion of human IgG1.
標識	Biotin

特性

Our **Abpromise guarantee** covers the use of **ab271541** in the following tested applications.

The application notes include recommended starting dilutions; optimal dilutions/concentrations should be determined by the end user.

アプリケーション	SDS-PAGE
製品の状態	Liquid
備考	Enzymatically biotin-labeled using Avi-tag™ technology

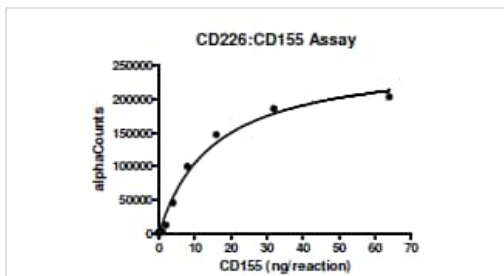
前処理および保存

保存方法および安定性	Shipped on Dry Ice. Store at -80°C. Avoid freeze / thaw cycle. Store In the Dark. pH: 7.40 Constituents: 0.13% Sodium phosphate, 0.64% Sodium chloride, 0.02% Potassium chloride, 20% Glycerol (glycerin, glycerine) This product is an active protein and may elicit a biological response in vivo, handle with caution.
------------	--

関連情報

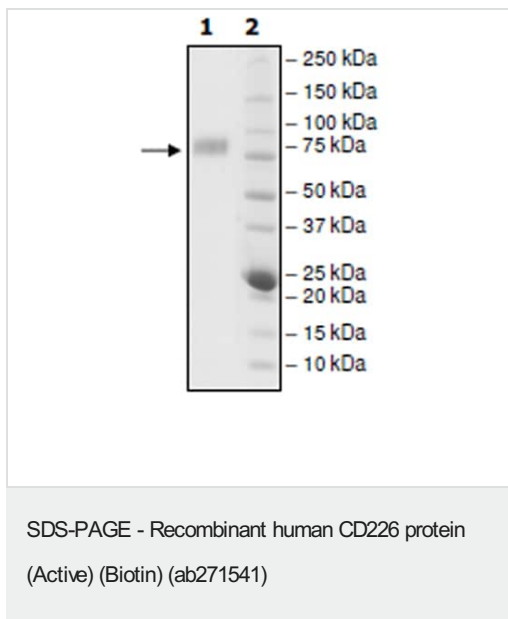
機能	Receptor involved in intercellular adhesion, lymphocyte signaling, cytotoxicity and lymphokine secretion mediated by cytotoxic T-lymphocyte (CTL) and NK cell.
組織特異性	Expressed by peripheral blood T-lymphocytes.
配列類似性	Contains 2 Ig-like C2-type (immunoglobulin-like) domains.
細胞内局在	Membrane.

画像



Specific activity of ab271541.

Functional Studies - Recombinant human CD226 protein (Active) (Biotin) (ab271541)



SDS-PAGE analysis of 2 µg ab271541.

Please note: All products are "FOR RESEARCH USE ONLY. NOT FOR USE IN DIAGNOSTIC PROCEDURES"

Our Abpromise to you: Quality guaranteed and expert technical support

- Replacement or refund for products not performing as stated on the datasheet
- Valid for 12 months from date of delivery
- Response to your inquiry within 24 hours
- We provide support in Chinese, English, French, German, Japanese and Spanish
- Extensive multi-media technical resources to help you
- We investigate all quality concerns to ensure our products perform to the highest standards

If the product does not perform as described on this datasheet, we will offer a refund or replacement. For full details of the Abpromise, please visit <https://www.abcam.co.jp/abpromise> or contact our technical team.

Terms and conditions

- Guarantee only valid for products bought direct from Abcam or one of our authorized distributors