

Recombinant Human CBS protein ab132564

画像数 1

製品の詳細

製品名	Recombinant Human CBS protein
発現系	Wheat germ
アクセッション番号	<u>P35520</u>
タンパク質長	Full length protein
Animal free	No
由来	Recombinant
生物種	Human
配列	MPSETPQAEVGPTGCPHRSGPHSAKGSLEKGSPEDKEAKEPL WIRPDAPS RCTWQLGRPASESPHHHTAPAKSPKILPDILKKIGDTPMVRI NKIGKKFG LKCELLAKCEFFNAGGSVKDRISLRMIEDAERDGLKPGDTI IEPTSGNT GIGLALAAAVRGYRCIIVMPEKMSSEKVDVLRALGAEIVRTP TNARFDSP ESHVGVAWRLKNEIPNSHILDQYRNASNPLAHYDTTAEILQ QCDGKLDM LVASVGTGGTITGIARKLKEKCPGCRIGVDPEGSILAEPEE LNQTEQTT YEVEGIGYDFIPTVLDRTVVDKWFKSNDEEAFTFARMLIAQE GLLCGSA GSTVAVAVKAAQELQEGQRCVVILPDSVRNYMTKFLSDRWML QKGFLKEE DLTEKKPWWWHLRVQELGLSAPLTVLPTITCGHTIEILREKG FDQAPVVD EAGVILGMVTLGNMLSSLLAGKVQPSDQVGKVIYKQFKQIRL TDTLGRLS HILEMDHFALVVHEQIQYHSTGKSSQRQMVFGVVTAIDLLNF VAAQERDQ K
予測される分子量	86 kDa including tags
領域	1 to 551
タグ	GST tag N-Terminus

特性

Our **Abpromise guarantee** covers the use of **ab132564** in the following tested applications.

The application notes include recommended starting dilutions; optimal dilutions/concentrations should be determined by the end user.

アプリケーション	ELISA
	SDS-PAGE
	Western blot

製品の状態	Liquid
-------	--------

備考

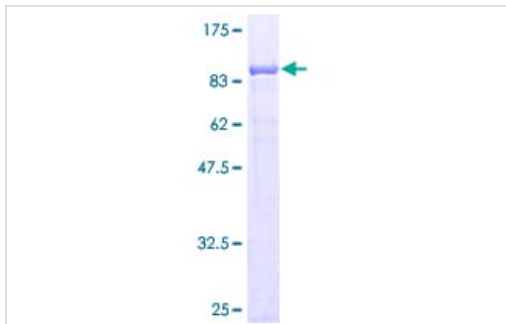
前処理および保存

保存方法および安定性	Shipped on dry ice. Upon delivery aliquot and store at -80°C. Avoid freeze / thaw cycles. pH: 8.00 Constituents: 0.31% Glutathione, 0.79% Tris HCl
------------	--

関連情報

機能	Only known pyridoxal phosphate-dependent enzyme that contains heme. Important regulator of hydrogen sulfide, especially in the brain, utilizing cysteine instead of serine to catalyze the formation of hydrogen sulfide. Hydrogen sulfide is a gastratransmitter with signaling and cytoprotective effects such as acting as a neuromodulator in the brain to protect neurons against hypoxic injury.
組織特異性	In the adult strongly expressed in liver and pancreas, some expression in heart and brain, weak expression in lung and kidney. In the fetus, expressed in brain, liver and kidney.
パスウェイ	Amino-acid biosynthesis; L-cysteine biosynthesis; L-cysteine from L-homocysteine and L-serine: step 1/2.
関連疾患	Defects in CBS are the cause of cystathionine beta-synthase deficiency (CBS) [MIM:236200]. CBS is an enzymatic deficiency resulting in altered sulfur metabolism and homocystinuria. The clinical features of untreated homocystinuria due to CBS deficiency include myopia, ectopia lentis, mental retardation, skeletal anomalies resembling Marfan syndrome, and thromboembolic events. Light skin and hair can also be present. Biochemical features include increased urinary homocystine and methionine.
配列類似性	Belongs to the cysteine synthase/cystathionine beta-synthase family. Contains 1 CBS domain.
細胞内局在	Cytoplasm. Nucleus.

画像



12.5% SDS-PAGE analysis of ab132564 stained with Coomassie Blue.

SDS-PAGE - Recombinant Human CBS protein
(ab132564)

Please note: All products are "FOR RESEARCH USE ONLY. NOT FOR USE IN DIAGNOSTIC PROCEDURES"

Our Abpromise to you: Quality guaranteed and expert technical support

- Replacement or refund for products not performing as stated on the datasheet
- Valid for 12 months from date of delivery
- Response to your inquiry within 24 hours
- We provide support in Chinese, English, French, German, Japanese and Spanish
- Extensive multi-media technical resources to help you
- We investigate all quality concerns to ensure our products perform to the highest standards

If the product does not perform as described on this datasheet, we will offer a refund or replacement. For full details of the Abpromise, please visit <https://www.abcam.co.jp/abpromise> or contact our technical team.

Terms and conditions

- Guarantee only valid for products bought direct from Abcam or one of our authorized distributors