

Recombinant Human CAMKIV protein ab119450

画像数 1

製品の詳細

製品名	Recombinant Human CAMKIV protein
精製度	> 85 % SDS-PAGE. ab119450 was purified using conventional chromatography. Purity is > 85% by SDS-PAGE.
発現系	Escherichia coli
アクセッション番号	<u>Q16566</u>
タンパク質長	Full length protein
Animal free	No
由来	Recombinant
生物種	Human
配列	MGSSHHHHHSSGLVPRGSHMGSHMLKVTVPSCSASSCSSVT ASAAPGTA SLVPDYWIDGNSRDALSDFFEVESELGRGATSIVYRCKQKGT QKPYALKV LKKTVDKKIVRTEIGVLLRLSHPNIIKLKEIFETPTEISLVL ELVTGGEL FDRIVEKGYYSERDAADAVKQILEAVAYLHENGIVHRDLKPE NLLYATPA PDAPLKIADFGLSKIVEHQVLMKTVCGTPGYCAPEILRGCAV GPEVDMWS VGIITYILLCGFEPFYDERGDQFMFRRILNCEYYFISPWDE VSLNAKDL VRKLIVLDPKKRLTTFQALQHPWVTGKAANFVHMDTAQQKLQ EFNARRKL KAAVKAVVASSRLGSASSSHGSIQESHKASRDPSPIQDGNED MKAIPEGE KIQGDGAQAQAVKGAQAEMLKVQALEKVKGADINAEAPKMVP KAVEDGIK VADLELEEGLAEEKLKTVEEAAAPREGQGSSAVGFVPPQDV ILPEY
予測される分子量	55 kDa including tags
領域	1 to 473
タグ	His tag N-Terminus

特性

Our **Abpromise guarantee** covers the use of **ab119450** in the following tested applications.

The application notes include recommended starting dilutions; optimal dilutions/concentrations should be determined by the end user.

アプリケーション SDS-PAGE

製品の状態 Liquid

前処理および保存

保存方法および安定性 Shipped at 4°C. Upon delivery aliquot and store at -20°C or -80°C. Avoid repeated freeze / thaw cycles.

pH: 8.00

Constituents: 0.32% Tris HCl, 10% Glycerol (glycerin, glycerine), 0.58% Sodium chloride

関連情報

機能 Calcium/calmodulin-dependent protein kinase belonging to a proposed calcium-triggered signaling cascade. May be involved in transcriptional regulation. May be involved in regulation of microtubule dynamics. In vitro, phosphorylates CREB1, CREBBP, PRM2, MEF2A, MEF2D and STMN1/OP18. May be involved in spermatogenesis. May play a role in the consolidation/retention of hippocampus-dependent long-term memory.

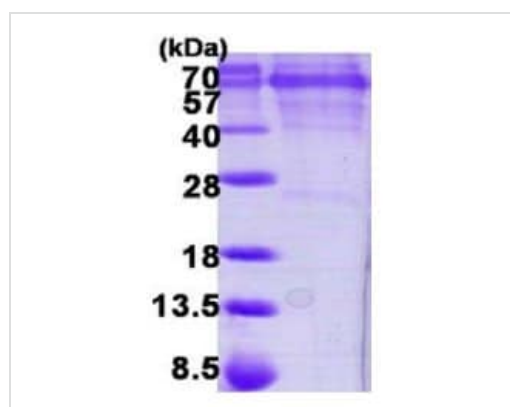
組織特異性 Expressed in epithelial ovarian cancer tissue.

配列類似性 Belongs to the protein kinase superfamily. CAMK Ser/Thr protein kinase family. CaMK subfamily. Contains 1 protein kinase domain.

翻訳後修飾 Autophosphorylated and phosphorylated by CAMKK1 and CAMKK2 (By similarity). Dephosphorylated by serine/threonine protein phosphatase 2A, probably on Thr-200.

細胞内局在 Cytoplasm. Nucleus. Substantial localization in certain neuronal nuclei. In spermatids associated with chromatin and nuclear matrix.

画像



12% SDS-PAGE showing ab119450 at approximately 54.5kDa (3µg).

SDS-PAGE - Recombinant Human CAMKIV protein (ab119450)

Please note: All products are "FOR RESEARCH USE ONLY. NOT FOR USE IN DIAGNOSTIC PROCEDURES"

Our Abpromise to you: Quality guaranteed and expert technical support

- Replacement or refund for products not performing as stated on the datasheet
- Valid for 12 months from date of delivery
- Response to your inquiry within 24 hours

- We provide support in Chinese, English, French, German, Japanese and Spanish
- Extensive multi-media technical resources to help you
- We investigate all quality concerns to ensure our products perform to the highest standards

If the product does not perform as described on this datasheet, we will offer a refund or replacement. For full details of the Abpromise, please visit <https://www.abcam.co.jp/abpromise> or contact our technical team.

Terms and conditions

- Guarantee only valid for products bought direct from Abcam or one of our authorized distributors