

Recombinant Human ATP1A3 protein ab152203

画像数 1

製品の詳細

製品名	Recombinant Human ATP1A3 protein
発現系	Wheat germ
アクセッション番号	<u>P13637</u>
タンパク質長	Full length protein
Animal free	No
由来	Recombinant
生物種	Human
配列	MGDKKDDKDSPKKNKGKERRDLDDLKKEVAMTEHKMSVEEVC RKYNTDCV QLTHSKAQEILARDGPNALTPPPTTPEWVKFCRQLFGGFSI LLWIGAIL CFLAYGIQAGTEDDPSGDNLYLGIVLAAVVIITGCFSYYQEA KSSKIMES FKNMVPQQALVIREGEKMQVNAEEVVVVDLVEIKGGDRVPAD LRIISAHG CKVDNSSLTGESEPQTRSPDCTHDNPLETRNITFFSTNCVEG TARGVVVA TGDRTVMGRIATLASGLEVGKTPIAIEIEHFIQLITGVAVFL GVSFFILS LILGYTWLEAVIFLIGIIVANVPEGLLATVTVCLTLTAKRMA RKNCLVKN LEAVETLGSTSTICSDKTGTLTQNRMTVAHMWFDNQIHEADT TEDQSGTS FDKSSHTWVALSHIAGLCNRAVFKGGQDNIPVLKRDVAGDAS ESALLKCI ELSSGSVKLMRERNKKVAEIPFNSTNKYQLSIHETEDPNDNR YLLVMKGA PERILDRCSTILLQGKEQPLDEEMKEAFQNAVLELGGGLGERV LGFCHYYL PEEQFPKGFADFCDVNFVTTDNLCFVGLMSMIDPPRAAVPDA VGKCRSAG IKVIMVTGDHPITAKAIAKGVGIISEGNETVEDIAARLNIPV SQVNRDA KACVIHGTDLKDFTSQIDEILQNHTEIVFARTSPQQKLIIV EGCQRQGA

IVAVTGDGVNDSPALKKADIGVAMGIAGSDVSKQAADMILLD
DNFASIVT
GVEEGRLIFDNLKKSIAAYTLTSNIPEITPFLLFIMANIPLPL
GTITILCI
DLGTDMPAISLAYEAAESDIMKRQPRNPRTDKLVNERLISM
AYGQIGMI
QALGGFFSYFVILAENGFLPGNLVGIRLNWDDRTVNDLEDSY
GQQWTYEQ
RKVVEFTCHTAFFVSIVVVQWADLIICKTRRNSVFQQGMKNK
ILIFGLFE
ETALAAFLSYCPGMDVALRMYPLKPSWWFCAFYSFLIFVYD
EIRKLILR RNPGGWVEKETYY

予測される分子量 138 kDa including tags
領域 1 to 1013

特性

Our **Abpromise guarantee** covers the use of **ab152203** in the following tested applications.

The application notes include recommended starting dilutions; optimal dilutions/concentrations should be determined by the end user.

アプリケーション ELISA
SDS-PAGE
Western blot

製品の状態 Liquid

備考 This product was previously labelled as alpha 3 Sodium Potassium ATPase.

前処理および保存

保存方法および安定性 Shipped on dry ice. Upon delivery aliquot and store at -80°C. Avoid freeze / thaw cycles.
pH: 8.00
Constituents: 0.31% Glutathione, 0.79% Tris HCl

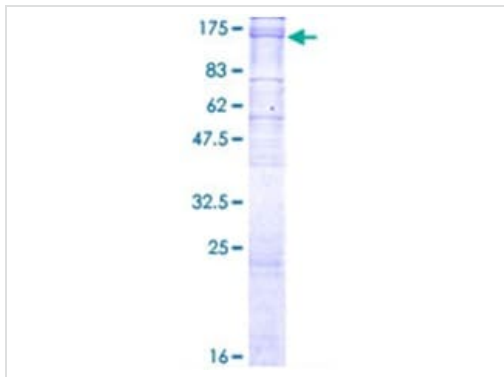
関連情報

機能 This is the catalytic component of the active enzyme, which catalyzes the hydrolysis of ATP coupled with the exchange of sodium and potassium ions across the plasma membrane. This action creates the electrochemical gradient of sodium and potassium ions, providing the energy for active transport of various nutrients.

関連疾患 Dystonia 12
Alternating hemiplegia of childhood 2
Cerebellar ataxia, areflexia, pes cavus, optic atrophy, and sensorineural hearing loss

配列類似性 Belongs to the cation transport ATPase (P-type) (TC 3.A.3) family. Type IIC subfamily.

細胞内局在 Cell membrane.



12.5% SDS-PAGE analysis of ab152203 stained with Coomassie Blue.

SDS-PAGE - Recombinant Human ATP1A3 protein (ab152203)

Please note: All products are "FOR RESEARCH USE ONLY. NOT FOR USE IN DIAGNOSTIC PROCEDURES"

Our Abpromise to you: Quality guaranteed and expert technical support

- Replacement or refund for products not performing as stated on the datasheet
- Valid for 12 months from date of delivery
- Response to your inquiry within 24 hours
- We provide support in Chinese, English, French, German, Japanese and Spanish
- Extensive multi-media technical resources to help you
- We investigate all quality concerns to ensure our products perform to the highest standards

If the product does not perform as described on this datasheet, we will offer a refund or replacement. For full details of the Abpromise, please visit <https://www.abcam.co.jp/abpromise> or contact our technical team.

Terms and conditions

- Guarantee only valid for products bought direct from Abcam or one of our authorized distributors