

Product datasheet

Recombinant Human ASAH1 protein ab114948

画像数 1

製品の詳細

製品名	Recombinant Human ASAH1 protein
発現系	Wheat germ
アクセッション番号	Q13510
タンパク質長	Protein fragment
Animal free	No
由来	Recombinant
生物種	Human
配列	PPWTEDCRKSTYPPSGPTYRGAVPWYTINLDLPPYKRWHELM LDKAPMLK VIVNSLKNMINTFVPSGKVMQVVDEKLPGLLGNFPGPFEEEM KGIAAVTD
予測される分子量	37 kDa including tags
領域	25 to 124

特性

Our **Abpromise guarantee** covers the use of **ab114948** in the following tested applications.

The application notes include recommended starting dilutions; optimal dilutions/concentrations should be determined by the end user.

アプリケーション	ELISA SDS-PAGE Western blot
製品の状態	Liquid
備考	Protein concentration is above or equal to 0.05 mg/ml. Best used within three months from the date of receipt.

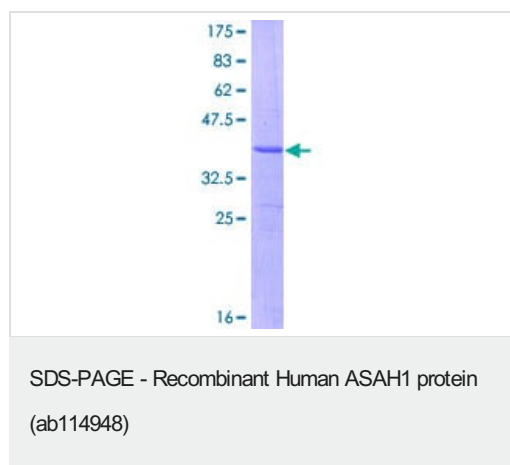
前処理および保存

保存方法および安定性	Shipped on dry ice. Upon delivery aliquot and store at -80°C. Avoid freeze / thaw cycles. pH: 8.00 Constituents: 0.3% Glutathione, 0.79% Tris HCl
------------	---

関連情報

機能	Hydrolyzes the sphingolipid ceramide into sphingosine and free fatty acid.
組織特異性	Broadly expressed with highest expression in heart.
関連疾患	Defects in ASAH1 are the cause of Farber lipogranulomatosis (FL) [MIM:228000]; also known as Farber disease (FD). This sphingolipid disease is characterized by subcutaneous lipid-loaded nodules, excruciating pain in the joints and extremities, marked accumulation of ceramide in lysosomes, and death by three years of age.
配列類似性	Belongs to the acid ceramidase family.
細胞内局在	Lysosome.

画像



12.5% SDS-PAGE showing ab114948 at approximately 36.63kDa. Stained with Coomassie Blue.

Please note: All products are "FOR RESEARCH USE ONLY. NOT FOR USE IN DIAGNOSTIC PROCEDURES"

Our Abpromise to you: Quality guaranteed and expert technical support

- Replacement or refund for products not performing as stated on the datasheet
- Valid for 12 months from date of delivery
- Response to your inquiry within 24 hours
- We provide support in Chinese, English, French, German, Japanese and Spanish
- Extensive multi-media technical resources to help you
- We investigate all quality concerns to ensure our products perform to the highest standards

If the product does not perform as described on this datasheet, we will offer a refund or replacement. For full details of the Abpromise, please visit <https://www.abcam.co.jp/abpromise> or contact our technical team.

Terms and conditions

- Guarantee only valid for products bought direct from Abcam or one of our authorized distributors