

Recombinant human Arg2 protein (Active) ab271367

画像数 2

製品の詳細

製品名	Recombinant human Arg2 protein (Active)
生理活性	Recombinant human Arg2 protein Km was determined to be 480 μ M in enzymatic assay using thioarginine as substrate.
精製度	>= 95 % SDS-PAGE. Affinity purified.
発現系	Baculovirus infected Sf9 cells
アクセッション番号	<u>P78540</u>
タンパク質長	Protein fragment
Animal free	No
由来	Recombinant
生物種	Human
配列	SVHSAVAVIGA PFSQGQKRKG VEHGPAAIRE AGLMKRLSSL GCHLKDFGDL SFTPVPKDDL YNNLIVNPRS VGLANQELAE VVSRAVSDGY SCVTLGGDHS LAIGTISGHA RHCPDLCVVW VDAHADINTP LTTSSGNLHG QPVSFLLREL QDKVPQLPGF SWIKPCISSA SIVYIGLRDV DPPEHFILKN YDIQYFSMRD IDRLGIQKVM ERTFDLLIGK RQRPIHLSFD IDAFDPTLAP ATGTPVVGGL TYREGMYIAE EIHNTGLLSA LDLVEVNPQL ATSEEEAKTT ANLAVDVIAS SFGQTREGGH IVYDQLPTPS SPDESENQAR VRI

予測される分子量	38 kDa including tags
領域	22 to 354
タグ	His tag N-Terminus
配列の追加情報	Mature chain.

特性

Our **Abpromise guarantee** covers the use of **ab271367** in the following tested applications.

The application notes include recommended starting dilutions; optimal dilutions/concentrations should be determined by the end user.

アプリケーション	SDS-PAGE
----------	----------

Functional Studies

製品の状態

Liquid

前処理および保存

保存方法および安定性

Shipped on Dry Ice. Store at -80°C. Avoid freeze / thaw cycle.

pH: 8.00

Preservative: 0.95% Imidazole

Constituents: 0.63% Tris HCl, 0.64% Sodium chloride, 0.02% Potassium chloride, 0.04% Tween, 20% Glycerol (glycerin, glycerine)

This product is an active protein and may elicit a biological response in vivo, handle with caution.

関連情報

機能

May play a role in the regulation of extra-urea cycle arginine metabolism and also in down-regulation of nitric oxide synthesis. Extrahepatic arginase functions to regulate L-arginine bioavailability to NO synthase. Since NO synthase is found in the penile corpus cavernosum smooth muscle, the clitoral corpus cavernosum and the vagina, arginase II plays a role in both male and female sexual arousal. It is therefore a potential target for the treatment of male and female sexual arousal disorders.

組織特異性

Expressed most strongly in kidney and prostate, much less strongly in the brain, skeletal muscle, placenta, lung, mammary gland, macrophage, uterus, testis and gut, but apparently not in the liver, heart and pancreas.

パスウェイ

Nitrogen metabolism; urea cycle; L-ornithine and urea from L-arginine: step 1/1.

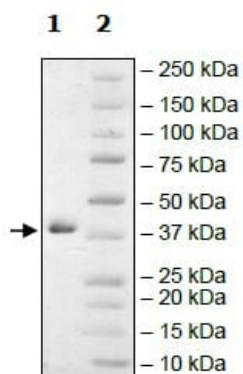
配列類似性

Belongs to the arginase family.

細胞内局在

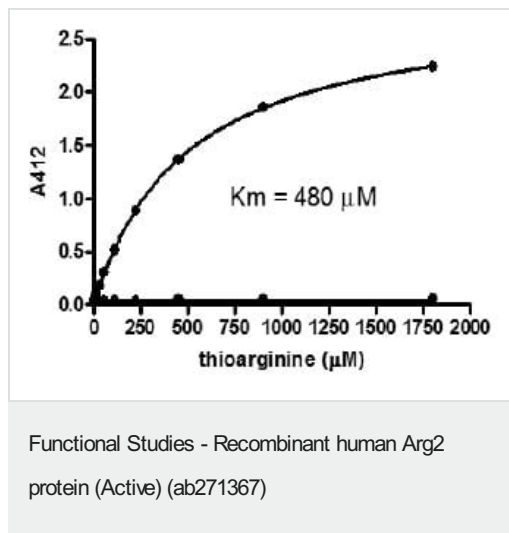
Mitochondrion.

画像



SDS-PAGE analysis by ab271367.

SDS-PAGE - Recombinant human Arg2 protein
(Active) (ab271367)



Recombinant human Arg2 protein K_m was determined to be 480 μM in enzymatic assay using thioarginine as substrate.

Please note: All products are "FOR RESEARCH USE ONLY. NOT FOR USE IN DIAGNOSTIC PROCEDURES"

Our Abpromise to you: Quality guaranteed and expert technical support

- Replacement or refund for products not performing as stated on the datasheet
- Valid for 12 months from date of delivery
- Response to your inquiry within 24 hours
- We provide support in Chinese, English, French, German, Japanese and Spanish
- Extensive multi-media technical resources to help you
- We investigate all quality concerns to ensure our products perform to the highest standards

If the product does not perform as described on this datasheet, we will offer a refund or replacement. For full details of the Abpromise, please visit <https://www.abcam.co.jp/abpromise> or contact our technical team.

Terms and conditions

- Guarantee only valid for products bought direct from Abcam or one of our authorized distributors