

Recombinant Human Annexin A1/ANXA1 protein (His tag) ab92966

画像数 1

製品の詳細

製品名	Recombinant Human Annexin A1/ANXA1 protein (His tag)	
精製度	> 90 % SDS-PAGE. Purified by 6xHis tag / Immobilized-metal affinity chromatography (IMAC).	
発現系	Escherichia coli	
アクセッション番号	<u>P04083</u>	
タンパク質長	Full length protein	
Animal free	No	
由来	Recombinant	
生物種	Human	
配列	<p>MAMVSEFLKQAWFIENEEQEYVQTVKSSKGGPGSAVSPYPTF NPSSDVAA LHKAIMVKGVDIATIIDILTKRNNAQRQIKAAAYLQETGKPL DETLKKAL TGHLEEVVLALLKTPAQFDADELRAAMKGLGTDEDTLIEILA SRTNKEIR DINRVYREELKRDLAKDITSDTSGDFRNALLSLAKGDRSEDF GVNEDLAD SDARALYEAGERRKGTDVNVFNTILTTRSYPQLRRVFQKYTK YSKHDMNK VLDLELKGDIKCLTAIVKCATSKPAFFAEKLNQAMKGVGTR HKALIRIM VSRSEIDMNDIKAFYQKMYGISLCQAILDETKGDYKILVAL CGGN</p>	
領域	1 to 346	
タグ	His tag N-Terminus	

特性

Our **Abpromise guarantee** covers the use of **ab92966** in the following tested applications.

The application notes include recommended starting dilutions; optimal dilutions/concentrations should be determined by the end user.

アプリケーション Western blot

ELISA
SDS-PAGE
Mass Spectrometry

製品の状態

Liquid

前処理および保存

保存方法および安定性

Shipped on dry ice. Upon delivery aliquot and store at -80°C. Avoid freeze / thaw cycles.
pH: 8.00
Preservative: 0.68% Imidazole
Constituents: 0.0078% Beta mercaptoethanol, 0.316% Tris HCl, 2.9% Sodium chloride

関連情報

機能

Calcium/phospholipid-binding protein which promotes membrane fusion and is involved in exocytosis. This protein regulates phospholipase A2 activity. It seems to bind from two to four calcium ions with high affinity.

配列類似性

Belongs to the annexin family.
Contains 4 annexin repeats.

ドメイン

A pair of annexin repeats may form one binding site for calcium and phospholipid.

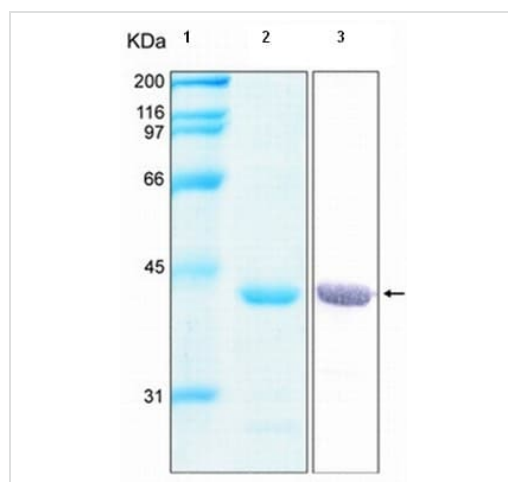
翻訳後修飾

Phosphorylated by protein kinase C, epidermal growth factor receptor/kinase and TRPM7.
Phosphorylation results in loss of the inhibitory activity.

細胞内局在

Nucleus. Cytoplasm. Cell projection > cilium. Basolateral cell membrane. Found in the cilium, nucleus and basolateral cell membrane of ciliated cells in the tracheal endothelium (By similarity). Found in the cytoplasm of type II pneumocytes and alveolar macrophages.

画像



12% SDS-PAGE showing ab92966

Lane 1 MWM

Lane 2 Stained with Coomassie Blue

Lane 3 Peptide fingerprinting by MALDI-TOF-TOF mass spectrometry

SDS-PAGE - Recombinant Human Annexin
A1/ANXA1 protein (ab92966)

Please note: All products are "FOR RESEARCH USE ONLY. NOT FOR USE IN DIAGNOSTIC PROCEDURES"

Our Abpromise to you: Quality guaranteed and expert technical support

- Replacement or refund for products not performing as stated on the datasheet
- Valid for 12 months from date of delivery
- Response to your inquiry within 24 hours

- We provide support in Chinese, English, French, German, Japanese and Spanish
- Extensive multi-media technical resources to help you
- We investigate all quality concerns to ensure our products perform to the highest standards

If the product does not perform as described on this datasheet, we will offer a refund or replacement. For full details of the Abpromise, please visit <https://www.abcam.co.jp/abpromise> or contact our technical team.

Terms and conditions

- Guarantee only valid for products bought direct from Abcam or one of our authorized distributors