

Recombinant Human Annexin A1/ANXA1 protein ab86446

[1 References](#) [画像数 1](#)

製品の詳細

製品名	Recombinant Human Annexin A1/ANXA1 protein		
精製度	> 90 % SDS-PAGE. ab86446 is purified using conventional chromatography techniques.		
発現系	Escherichia coli		
アクセッション番号	<u>P04083</u>		
タンパク質長	Full length protein		
Animal free	No		
由来	Recombinant		
生物種	Human		
配列	MAMVSEFLKQ AWFIENEEQE YVQTVKSSKG GPGSAVSPYP TFNPSSDVAA LHKAIMVKGV DEATIIDILT KRNNARQQI KAAYLQETGK PLDETLKKAL TGHLEEVVLA LLKTPAQFDA DELRAAMKGL GTDEDLIEI LASRTNKEIR DINRVYREEL KRDLAKDITS DTSGDFRNAL LSLAKGDRSE DFGVNEDLAD SDARALYEAG ERRKGTDVNV FNTILTTRSY PQLRRVFQKY TKYSKHDMNK VLDLELKGDI EKCLTAIVKC ATSKPAFFAE KLHQAMKGVG TRHKALIRIM VSRSEIDMND IKAFYQKMYG ISLCQAILDE TKGDYEKILV ALCGGN		
予測される分子量	39 kDa		
領域	1 to 346		

特性

Our **Abpromise guarantee** covers the use of **ab86446** in the following tested applications.

The application notes include recommended starting dilutions; optimal dilutions/concentrations should be determined by the end user.

アプリケーション SDS-PAGE

製品の状態 Liquid

前処理および保存

保存方法および安定性

Shipped at 4°C. Store at +4°C short term (1-2 weeks). Upon delivery aliquot. Store at -20°C or -80°C. Avoid freeze / thaw cycle.

pH: 8.00

Constituents: 0.0154% DTT, 0.316% Tris HCl, 10% Glycerol (glycerin, glycerine), 0.58% Sodium chloride

関連情報

機能

Calcium/phospholipid-binding protein which promotes membrane fusion and is involved in exocytosis. This protein regulates phospholipase A2 activity. It seems to bind from two to four calcium ions with high affinity.

配列類似性

Belongs to the annexin family.
Contains 4 annexin repeats.

ドメイン

A pair of annexin repeats may form one binding site for calcium and phospholipid.

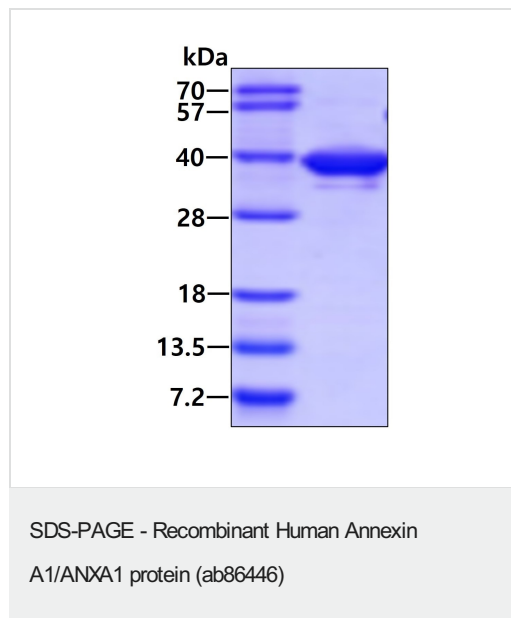
翻訳後修飾

Phosphorylated by protein kinase C, epidermal growth factor receptor/kinase and TRPM7.
Phosphorylation results in loss of the inhibitory activity.

細胞内局在

Nucleus. Cytoplasm. Cell projection > cilium. Basolateral cell membrane. Found in the cilium, nucleus and basolateral cell membrane of ciliated cells in the tracheal endothelium (By similarity). Found in the cytoplasm of type II pneumocytes and alveolar macrophages.

画像



15% SDS-PAGE showing ab86446 at approximately 38.7kDa (3μg).

Please note: All products are "FOR RESEARCH USE ONLY. NOT FOR USE IN DIAGNOSTIC PROCEDURES"

Our Abpromise to you: Quality guaranteed and expert technical support

- Replacement or refund for products not performing as stated on the datasheet

- Valid for 12 months from date of delivery
- Response to your inquiry within 24 hours

- We provide support in Chinese, English, French, German, Japanese and Spanish
- Extensive multi-media technical resources to help you
- We investigate all quality concerns to ensure our products perform to the highest standards

If the product does not perform as described on this datasheet, we will offer a refund or replacement. For full details of the Abpromise, please visit <https://www.abcam.co.jp/abpromise> or contact our technical team.

Terms and conditions

- Guarantee only valid for products bought direct from Abcam or one of our authorized distributors