

Recombinant human AACT protein ab182695

画像数 2

製品の詳細

製品名	Recombinant human AACT protein
生理活性	<p>Measured by its ability to inhibit chymotrypsin cleavage of a fluorogenic peptide substrate MCA-RPKPVE-Nval-WRK(Dnp)-NH₂.</p> <p>The IC₅₀ value is <6 nM.</p>
精製度	> 95 % SDS-PAGE.
エンドトキシン・レベル	< 1.000 Eu/μg
発現系	HEK 293 cells
アクセッション番号	<u>P01011</u>
タンパク質長	Full length protein
Animal free	No
由来	Recombinant
生物種	Human
配列	<p>CHPN SPLDEENLTQENQDRGTHVDLGLASANVDFAFSLYKQL VLKAPDKN VIFSP LSISTALAFLSLG AHNTTLTEILKGLKFNL TETSEAE IHQSFQHL LRTL NQSSDELQLSMGNAMFVKEQLSLLDRFTEDAKRLYGSE AFATDFQD SAAAKKLINDYVKN GTRGKITDLIKDLDSQTMMLVNYIFFK AKWEMPFD PQDTHQSRFYLSKKKWVMPMMSLHHLTIPYFRDEELSCTVV ELKYTGNA SALFILPDQDKMEEVEAMLLPETLKRWRDSLEFREIGELYLP KFSISRDY N LNDILLQLGIEEAFTSKADLSGITGARNLAVSQVVKAVLDV FEEGT EASAATAVKITLLSALVETRITIVRFNRPFMIIVPTDTQNIIF FMSKV TNP KQA</p>
予測される分子量	23 kDa including tags
領域	23 to 423
タグ	His tag C-Terminus

配列の追加情報

Mature form. AAH03559.

特性

Our **Abpromise guarantee** covers the use of **ab182695** in the following tested applications.

The application notes include recommended starting dilutions; optimal dilutions/concentrations should be determined by the end user.

アプリケーション

SDS-PAGE

Functional Studies

製品の状態

Lyophilized

前処理および保存

保存方法および安定性

Shipped at 4°C. Store at -80°C. Reconstitute for long term storage.

pH: 7.4

Constituents: 0.88% Sodium chloride, 0.48% HEPES, 5% Trehalose

This product is an active protein and may elicit a biological response in vivo, handle with caution.

再構成

Reconstitute with sterile deionized water to a concentration of 400 µg/ml.

関連情報

機能

Although its physiological function is unclear, it can inhibit neutrophil cathepsin G and mast cell chymase, both of which can convert angiotensin-1 to the active angiotensin-2.

組織特異性

Plasma. Synthesized in the liver. Like the related alpha-1-antitrypsin, its concentration increases in the acute phase of inflammation or infection. Found in the amyloid plaques from the hippocampus of Alzheimer disease brains.

関連疾患

Defects in SERPINA3 may be a cause of chronic obstructive pulmonary disease (COPD) [MIM:107280].

配列類似性

Belongs to the serpin family.

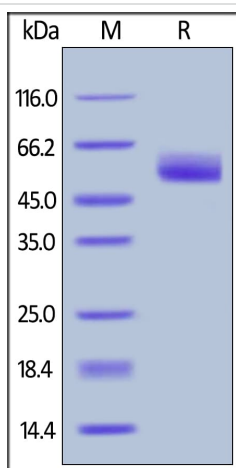
ドメイン

The reactive center loop (RCL) extends out from the body of the protein and directs binding to the target protease. The protease cleaves the serpin at the reactive site within the RCL, establishing a covalent linkage between the carboxyl group of the serpin reactive site and the serine hydroxyl of the protease. The resulting inactive serpin-protease complex is highly stable.

細胞内局在

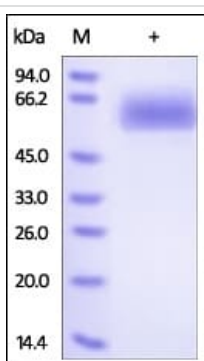
Secreted.

画像



Human Serpin A3 (His Tag) on SDS-PAGE under reducing (R) condition. The gel was stained overnight with Coomassie Blue. The purity of the protein is greater than 95%.

SDS-PAGE - Recombinant human AACT protein
(ab182695)



SDS-PAGE analysis of reduced ab182695 stained overnight with Coomassie Blue.

SDS-PAGE - Recombinant human AACT protein
(ab182695)

Please note: All products are "FOR RESEARCH USE ONLY. NOT FOR USE IN DIAGNOSTIC PROCEDURES"

Our Abpromise to you: Quality guaranteed and expert technical support

- Replacement or refund for products not performing as stated on the datasheet
- Valid for 12 months from date of delivery
- Response to your inquiry within 24 hours
- We provide support in Chinese, English, French, German, Japanese and Spanish
- Extensive multi-media technical resources to help you

- We investigate all quality concerns to ensure our products perform to the highest standards

If the product does not perform as described on this datasheet, we will offer a refund or replacement. For full details of the Abpromise, please visit <https://www.abcam.co.jp/abpromise> or contact our technical team.

Terms and conditions

- Guarantee only valid for products bought direct from Abcam or one of our authorized distributors