

### Recombinant Human 67kDa Laminin Receptor protein ab114294

画像数 1

#### 製品の詳細

製品名	Recombinant Human 67kDa Laminin Receptor protein
発現系	Wheat germ
アクセッション番号	<b>P08865</b>
タンパク質長	Full length protein
Animal free	No
由来	Recombinant
生物種	Human
配列	MSGALDVLQMKEEDVLKFLAAGTHLGGTNLDFQMEQYIYKRK SDGIYIIN LKRTWEKLLLAARAIVAIENPADVSVISSRNTGQRAVLKFAA ATGATPIA GRFTPGTFTNQIQAAFREPRLLVVTDPRAGHQPLTEASYVNL PTIALCNT DSPLRYVDIAIPCNNKGAHSVGLMWWMLAREVLRMRGTISRE HPWEVMPD LYFYRDPEEIEKEEQAAAEEKAVTKKEEFQGEWTAPAPEFTATQ PEVADWSE GVQVPSVPIQQFPTEDWSAQPATEDWSAAPTAQATEWVGATT DWS
予測される分子量	59 kDa including tags
領域	1 to 295

#### 特性

Our **Abpromise guarantee** covers the use of **ab114294** in the following tested applications.

The application notes include recommended starting dilutions; optimal dilutions/concentrations should be determined by the end user.

アプリケーション	Western blot ELISA SDS-PAGE
製品の状態	Liquid

**保存方法および安定性**

Shipped on dry ice. Upon delivery aliquot and store at -80°C. Avoid freeze / thaw cycles.

pH: 8.00

Constituents: 0.3% Glutathione, 0.79% Tris HCl

**関連情報**

**機能**

Required for the assembly and/or stability of the 40S ribosomal subunit. Required for the processing of the 20S rRNA-precursor to mature 18S rRNA in a late step of the maturation of 40S ribosomal subunits. Also functions as a cell surface receptor for laminin. Plays a role in cell adhesion to the basement membrane and in the consequent activation of signaling transduction pathways. May play a role in cell fate determination and tissue morphogenesis. Acts as a PPP1R16B-dependent substrate of PPP1CA. Also acts as a receptor for several other ligands, including the pathogenic prion protein, viruses, and bacteria.

**配列類似性**

Belongs to the ribosomal protein S2P family.

**翻訳後修飾**

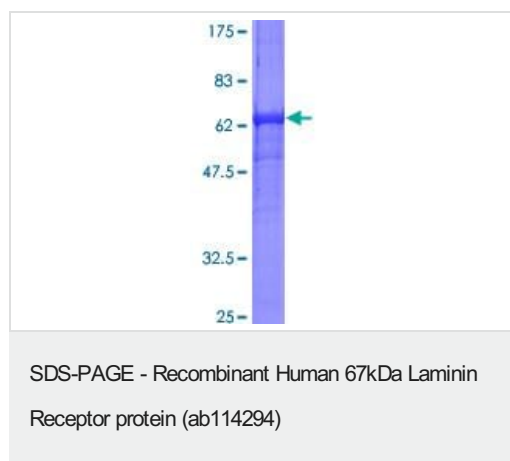
Acylated. Acylation may be a prerequisite for conversion of the monomeric 37 kDa laminin receptor precursor (37LRP) to the mature dimeric 67 kDa laminin receptor (67LR), and may provide a mechanism for membrane association.

Cleaved by stromelysin-3 (ST3) at the cell surface. Cleavage by stromelysin-3 may be a mechanism to alter cell-extracellular matrix interactions.

**細胞内局在**

Cell membrane. Cytoplasm. Nucleus. 67LR is found at the surface of the plasma membrane, with its C-terminal laminin-binding domain accessible to extracellular ligands. 37LRP is found at the cell surface, in the cytoplasm and in the nucleus (By similarity). Co-localizes with PPP1R16B in the cell membrane.

**画像**



12.5% SDS-PAGE image showing ab114294 at approx 58.56kDa. Stained with Coomassie Blue.

**Please note:** All products are "FOR RESEARCH USE ONLY. NOT FOR USE IN DIAGNOSTIC PROCEDURES"

**Our Abpromise to you: Quality guaranteed and expert technical support**

- Replacement or refund for products not performing as stated on the datasheet

- Valid for 12 months from date of delivery
- Response to your inquiry within 24 hours
  
- We provide support in Chinese, English, French, German, Japanese and Spanish
- Extensive multi-media technical resources to help you
- We investigate all quality concerns to ensure our products perform to the highest standards

If the product does not perform as described on this datasheet, we will offer a refund or replacement. For full details of the Abpromise, please visit <https://www.abcam.co.jp/abpromise> or contact our technical team.

### **Terms and conditions**

---

- Guarantee only valid for products bought direct from Abcam or one of our authorized distributors