

Product datasheet

Recombinant Human 14-3-3 eta/YWHAH protein ab116442

画像数 1

製品の詳細

製品名	Recombinant Human 14-3-3 eta/YWHAH protein
精製度	> 80 % Purified via His tag. ab116442 was purified by Ni ²⁺ -NTA agarose
発現系	Escherichia coli
アクセッション番号	<u>Q04917</u>
タンパク質長	Full length protein
Animal free	No
由来	Recombinant
生物種	Human
配列	MGSSHHHHHSSGLVPRGSHMASMTGGQQMGRGSMGDREQLL QRARLAEQ AERYDDMASAMKAVTELNEPLSNEDRNLLSVAYKNVVGARRS SWRVISSI EQKTMADGNEKKLEKVKAYREKIEKELETVCNDVLSLLDKFL IKNCNDFQ YESKVFYLLKMGDYRYLAEVASGEKKNSVVEASEAAYKEAF EISKEQMQ PTHPIRLGLALNFSVFYYEIQNAPEQAQLLAKQAFDDAIAEL DTLNEDSY KDSTLIMQLLRDNLTLWTSDQQDEEAGEGN
予測される分子量	32 kDa including tags
領域	1 to 246
タグ	His tag N-Terminus

特性

Our **Abpromise guarantee** covers the use of **ab116442** in the following tested applications.

The application notes include recommended starting dilutions; optimal dilutions/concentrations should be determined by the end user.

アプリケーション	SDS-PAGE Mass Spectrometry
質量分析	MALDI-TOF-TOF
製品の状態	Liquid

備考

ab116442 was alkylated, digested with trypsin and the mass of the resultant peptides determined by MADLI-TOF/TOF. The peptides obtained gave 67% sequence coverage of 14-3-3 eta/YWHAH. Theoretical pI: 5.3

This product was previously labelled as 14-3-3 eta

前処理および保存

保存方法および安定性

Shipped on dry ice. Upon delivery aliquot and store at -80°C. Avoid freeze / thaw cycles.

pH: 7.50

Constituents: 0.012% Benzamidine, 0.003% PMSF, 0.02% DTT, 0.6% HEPES, 50% Glycerol

関連情報

機能

Adapter protein implicated in the regulation of a large spectrum of both general and specialized signaling pathways. Binds to a large number of partners, usually by recognition of a phosphoserine or phosphothreonine motif. Binding generally results in the modulation of the activity of the binding partner.

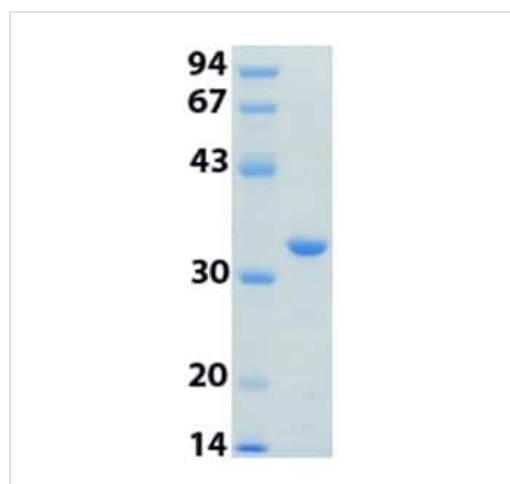
組織特異性

Expressed mainly in the brain and present in other tissues albeit at lower levels.

配列類似性

Belongs to the 14-3-3 family.

画像



12 % SDS-PAGE gel showing ab116442.

SDS-PAGE - Recombinant Human 14-3-3
eta/YWHAH protein (ab116442)

Please note: All products are "FOR RESEARCH USE ONLY. NOT FOR USE IN DIAGNOSTIC PROCEDURES"

Our Abpromise to you: Quality guaranteed and expert technical support

- Replacement or refund for products not performing as stated on the datasheet

- Valid for 12 months from date of delivery
- Response to your inquiry within 24 hours

- We provide support in Chinese, English, French, German, Japanese and Spanish
- Extensive multi-media technical resources to help you
- We investigate all quality concerns to ensure our products perform to the highest standards

If the product does not perform as described on this datasheet, we will offer a refund or replacement. For full details of the Abpromise, please visit <https://www.abcam.co.jp/abpromise> or contact our technical team.

Terms and conditions

- Guarantee only valid for products bought direct from Abcam or one of our authorized distributors