

Recombinant Beta Lactamase protein (Tagged) ab238278

画像数 3

製品の詳細

| | |
|-------------|--|
| 製品名 | Recombinant Beta Lactamase protein (Tagged) |
| 精製度 | > 90 % SDS-PAGE. |
| 発現系 | Escherichia coli |
| アクセッション番号 | <u>C7C422</u> |
| タンパク質長 | Full length protein |
| Animal free | No |
| 由来 | Recombinant |
| 配列 | GEIRPTIGQQMETGDQRFGLVFRQLAPNVWQHTSYLDMPGF GAVASNGL IVRDGGRVLVVDTAWTDDQTAQILNWIQKQINLPVALAVVTH AHQDKMGG MDALHAAGIATYANALSNQLAPQEGMVAQAQSLTFAANGWVE PATAPNFG PLKVFPYGPGHSDNITVIGIDGTDIAFGGCLIKDSKAKSLGN LGDADTEH YAASARAFGAAPFKASMIIVMSHSAPDSRAAITHTARMADKLR |
| 予測される分子量 | 42 kDa including tags |
| 領域 | 29 to 270 |
| タグ | His tag N-Terminus |
| 配列の追加情報 | Species: Klebsiella pneumoniae. Full-length mature chain lacking the signal peptide. N-terminal 6xHis-SUMO-tagged |

特性

Our **Abpromise guarantee** covers the use of **ab238278** in the following tested applications.

The application notes include recommended starting dilutions; optimal dilutions/concentrations should be determined by the end user.

| | |
|----------|-------------------------------|
| アプリケーション | SDS-PAGE Mass Spectrometry |
| 質量分析 | LC-MS/MS |
| 製品の状態 | Liquid |

前処理および保存

保存方法および安定性

Shipped at 4°C. Store at -20°C or -80°C. Avoid freeze / thaw cycle.

pH: 7.2

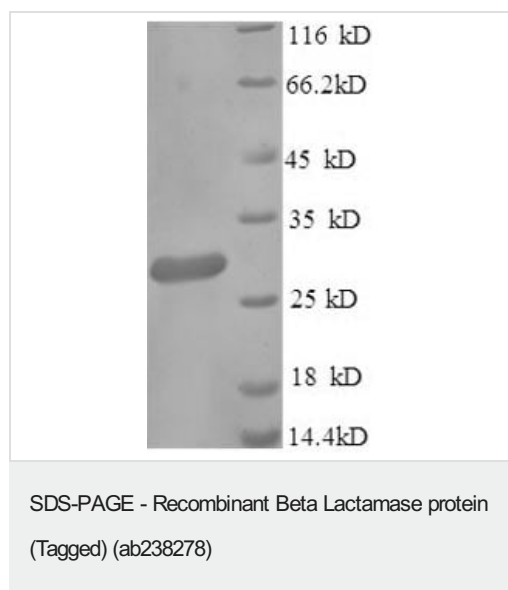
Constituents: Tris buffer, 50% Glycerol (glycerin, glycerine)

関連情報

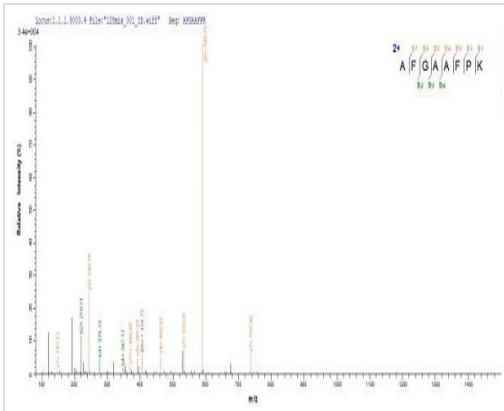
関連性

The beta lactam antibiotics (penicillins and cephalosporins) are the most frequently used antimicrobial agents. All of the beta lactams are structurally related through the presence of a core beta lactam ring. Bacterial resistance to beta lactams continues to increase, primarily due to the production of beta lactamases. Beta lactamases catalyze the hydrolysis of the beta lactam bond, which destroys antibacterial activity. Bacteria that produce TEM type or SHV type beta lactamases have point mutations in structural genes that have extended the substrate specificity of these beta lactamases. As a result, many of the beta lactamase producing Gram negative pathogens have become multidrug resistant.

画像

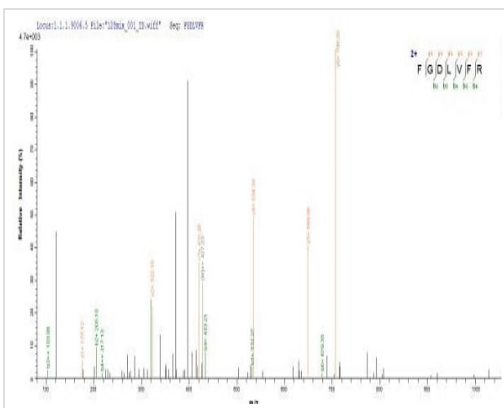


ab238278 analyzed by (Tris-Glycine gel) discontinuous SDS-PAGE (reduced) with 5% enrichment gel and 15% separation gel.



Mass Spectrometry - Recombinant Beta Lactamase protein (Tagged) (ab238278)

Based on the SEQUEST from database of E.coli host and target protein, the LC-MS/MS Analysis result of ab238278 could indicate that this peptide derived from E.coli-expressed *Klebsiella pneumoniae* Beta Lactamase.



Mass Spectrometry - Recombinant Beta Lactamase protein (Tagged) (ab238278)

Based on the SEQUEST from database of E.coli host and target protein, the LC-MS/MS Analysis result of ab238278 could indicate that this peptide derived from E.coli-expressed *Klebsiella pneumoniae* Beta Lactamase.

Please note: All products are "FOR RESEARCH USE ONLY. NOT FOR USE IN DIAGNOSTIC PROCEDURES"

Our Abpromise to you: Quality guaranteed and expert technical support

- Replacement or refund for products not performing as stated on the datasheet
- Valid for 12 months from date of delivery
- Response to your inquiry within 24 hours
- We provide support in Chinese, English, French, German, Japanese and Spanish
- Extensive multi-media technical resources to help you
- We investigate all quality concerns to ensure our products perform to the highest standards

If the product does not perform as described on this datasheet, we will offer a refund or replacement. For full details of the Abpromise, please visit <https://www.abcam.co.jp/abpromise> or contact our technical team.

Terms and conditions

- Guarantee only valid for products bought direct from Abcam or one of our authorized distributors