

# Native Human Transferrin protein ab91435

画像数 2

### 製品の詳細

製品名	Native Human Transferrin protein
精製度	> 95 % SDS-PAGE. Sterile filtered using 0.2 micron filter. Endotoxin Level determined by LAL testing.
エンドキシン・レベル	<=0.100 Eu/mg
発現系	Native
アクセッション番号	<b><u>P02787</u></b>
タンパク質長	Full length protein
Animal free	No
由来	Native
生物種	Human
配列	VPDKTVRWCAVSEHEATKCKQSFDRDHMKSVIPSDGPSVACVKK ASYLDCIR AIAANEADAVTL DAGLVYDAYLAPNNLKPVVAEFYGSKEDPQ TFYYAVAV VKKDSGFQMNQLRGKKSCHTGLGRSAGWNIPIGLLYCDLPEP RKPLEKAV ANFFSGSCAPCADGTD F PQLCQLCPGCGCSTLNQYFGYSGAF KCLKDGAG DVAFVKHSTIFENLANKARDQYELLCLDNTRKPVDEYKDCH LAQVPSHT VVARSMGGKEDLIWELLNQAQEHFGKDKSKEFQLFSSPHGKD LLFKDSA GFLKVPPRMDAKMYLGYEYVTAIRNLREGTCPEAPTDECKPV KWCALSHH ERLKCDEWSVNSVGKIECVSAETTEDCIAKIMNGEADAMSLD GGFVYIAG KCGLVPVLAENYKSDNCEDTPEAGYFAIAVVKKSASDLTWD NLKGGKSC HTAVGRTAGWNI PMGLLYNKINHCRFDEFFSEGCAPGSKKDS SLCKLCMG SGLNLCEPNNKEGYGYTGAFRCLVEKGDVAFVKHQVTPQNT GGKNPDPW AKNLNEKDYE L LCLDGTRKPV E EYANCHLAPNHAVVTRKD KEACVHKI

領域 20 to 698

## 特性

---

Our **Abpromise guarantee** covers the use of **ab91435** in the following tested applications.

The application notes include recommended starting dilutions; optimal dilutions/concentrations should be determined by the end user.

アプリケーション Western blot  
SDS-PAGE

製品の状態 Lyophilized

備考 Prepared from plasma shown to be non reactive for HBsAg, anti-HCV, anti-HBc, and negative for anti-HIV 1 & 2 by FDA approved tests.

Iron Content: >= 1100 ug per gram.

## 前処理および保存

---

保存方法および安定性 Shipped at 4°C. Store at -20°C.  
pH: 7.40  
Constituents: 0.328% Sodium phosphate, 0.87% Sodium chloride

## 関連情報

---

機能 Transferrins are iron binding transport proteins which can bind two Fe(3+) ions in association with the binding of an anion, usually bicarbonate. It is responsible for the transport of iron from sites of absorption and heme degradation to those of storage and utilization. Serum transferrin may also have a further role in stimulating cell proliferation.

組織特異性 Expressed by the liver and secreted in plasma.

関連疾患 Defects in TF are the cause of atransferrinemia (ATRAF) [MIM:209300]. Atransferrinemia is rare autosomal recessive disorder characterized by iron overload and hypochromic anemia.

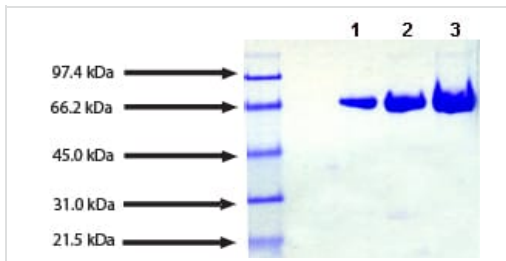
配列類似性 Belongs to the transferrin family.  
Contains 2 transferrin-like domains.

細胞内局在 Secreted.

---

## 画像

---



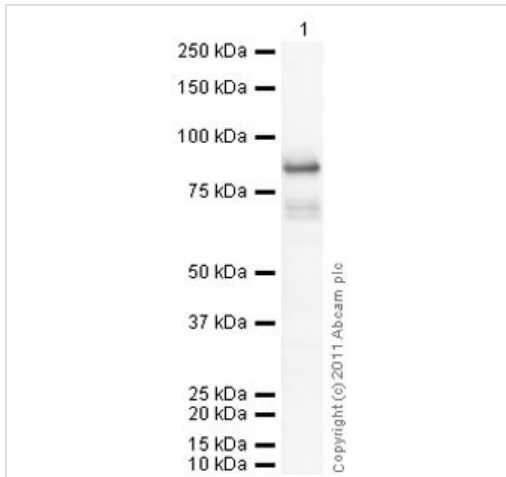
SDS-PAGE - Native Human Transferrin protein  
(ab91435)

SDS-PAGE: 4-12% Bis-Tris gel

Lane 1. 5 µg Transferrin (non-reduced/ no heat)

Lane 2. 10 µg Transferrin (non-reduced/ no heat)

Lane 3. 20 µg Transferrin (non-reduced/ no heat)



Western blot - Native Human Transferrin protein  
(ab91435)

**Please note:** All products are "FOR RESEARCH USE ONLY. NOT FOR USE IN DIAGNOSTIC PROCEDURES"

### Our Abpromise to you: Quality guaranteed and expert technical support

- Replacement or refund for products not performing as stated on the datasheet
- Valid for 12 months from date of delivery
- Response to your inquiry within 24 hours
- We provide support in Chinese, English, French, German, Japanese and Spanish
- Extensive multi-media technical resources to help you
- We investigate all quality concerns to ensure our products perform to the highest standards

If the product does not perform as described on this datasheet, we will offer a refund or replacement. For full details of the Abpromise, please visit <https://www.abcam.co.jp/abpromise> or contact our technical team.

### Terms and conditions

- Guarantee only valid for products bought direct from Abcam or one of our authorized distributors