

Native human Calpain 1 protein (Active) ab91019

★★★★★ [1 Abreviews](#) [4 References](#) [画像数 2](#)

製品の詳細

| | |
|-------------|---|
| 製品名 | Native human Calpain 1 protein (Active) |
| 生理活性 | <p>≥1,000 units per mg protein.</p> <p>One unit is defined as the amount of enzyme that hydrolyzes one picomole of Suc-LLVY-AMC per minute at 25degC.</p> |
| 精製度 | > 95 % SDS-PAGE. |
| 発現系 | Native |
| アクセッション番号 | <u>P07384</u> |
| タンパク質長 | Full length protein |
| Animal free | No |
| 由来 | Native |
| 生物種 | Human |
| 予測される分子量 | 110 kDa |

特性

Our **Abpromise guarantee** covers the use of **ab91019** in the following tested applications.

The application notes include recommended starting dilutions; optimal dilutions/concentrations should be determined by the end user.

| | |
|----------|---|
| アプリケーション | <p>Western blot</p> <p>Functional Studies</p> <p>SDS-PAGE</p> |
| 製品の状態 | Liquid |
| 備考 | <p>Prepared from whole blood shown to be non-reactive for HBsAg, anti-HCV, anti-HBc, and negative for anti-HIV 1 & 2 by FDA approved tests.</p> <p>Protein determination: Bradford Assay.</p> |

前処理および保存

| | |
|------------|--|
| 保存方法および安定性 | <p>Shipped on dry ice. Upon delivery aliquot and store at -80°C. Avoid freeze / thaw cycles.</p> <p>pH: 6.80</p> |
|------------|--|

Preservative: 0.14% Imidazole

Constituents: 0.038% EGTA, 0.039% Beta mercaptoethanol, 0.0292% EDTA, 30% Glycerol

This product is an active protein and may elicit a biological response in vivo, handle with caution.

関連情報

機能

Calcium-regulated non-lysosomal thiol-protease which catalyze limited proteolysis of substrates involved in cytoskeletal remodeling and signal transduction.

組織特異性

Ubiquitous.

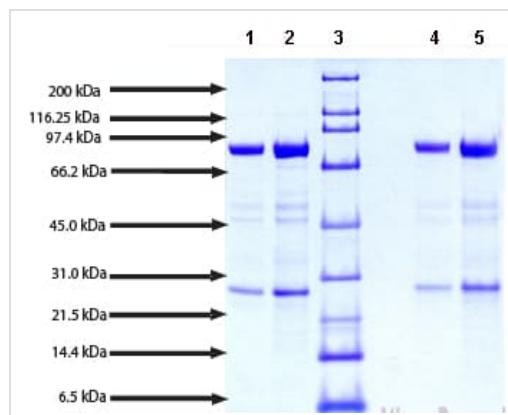
配列類似性

Belongs to the peptidase C2 family.
Contains 1 calpain catalytic domain.
Contains 4 EF-hand domains.

細胞内局在

Cytoplasm. Cell membrane. Translocates to the plasma membrane upon Ca(2+) binding.

画像



SDS-PAGE - Native human Calpain 1 protein
(ab91019)

SDS-PAGE: 4-12% Bis-Tris NuPAGE gel

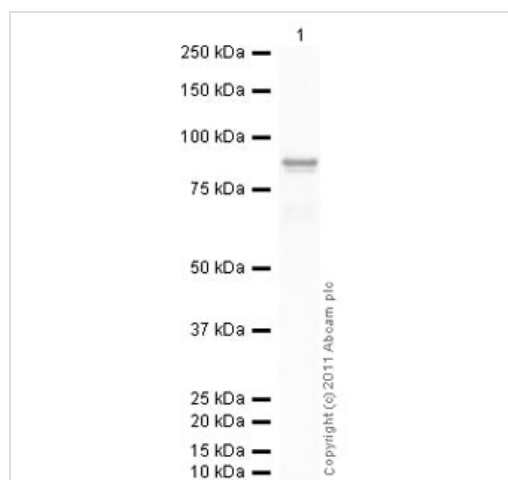
Lane 1: 5 µg ab91019 (reduced /heated).

Lane 2: 10 µg ab91019 (reduced/ heated).

Lane 3: Molecular weight markers.

Lane 4: 5 µg ab91019 (non-reduced/no heat).

Lane 5: 10 µg ab91019 (non-reduced/no heat).



Western blot - Native human Calpain 1 protein
(ab91019)

Anti-Calpain 1 antibody ([ab2543](#)) at 1 µg/ml + Native human Calpain 1 protein (Active) (ab91019) at 0.01 µg

Secondary

Goat Anti-Rabbit IgG H&L (HRP) preadsorbed ([ab97080](#)) at 1/5000 dilution

Developed using the ECL technique.

Performed under reducing conditions.

Exposure time: 10 seconds

Please note: All products are "FOR RESEARCH USE ONLY. NOT FOR USE IN DIAGNOSTIC PROCEDURES"

Our Abpromise to you: Quality guaranteed and expert technical support

- Replacement or refund for products not performing as stated on the datasheet
- Valid for 12 months from date of delivery
- Response to your inquiry within 24 hours
- We provide support in Chinese, English, French, German, Japanese and Spanish
- Extensive multi-media technical resources to help you
- We investigate all quality concerns to ensure our products perform to the highest standards

If the product does not perform as described on this datasheet, we will offer a refund or replacement. For full details of the Abpromise, please visit <https://www.abcam.co.jp/abpromise> or contact our technical team.

Terms and conditions

- Guarantee only valid for products bought direct from Abcam or one of our authorized distributors