

Human beta Actin peptide ab13772

★★★★★ [1 Abreviews](#) [6 References](#) [画像数 1](#)

製品の詳細

製品名	Human beta Actin peptide
精製度	> 90 % HPLC.
アクセッション番号	<u>P60709</u>
Animal free	No
由来	Synthetic
生物種	Human

特性

Our **Abpromise guarantee** covers the use of **ab13772** in the following tested applications.

The application notes include recommended starting dilutions; optimal dilutions/concentrations should be determined by the end user.

アプリケーション Blocking - Blocking peptide for Anti-beta Actin antibody [mAbcam 8224] - Loading Control (**ab8224**), Anti-beta Actin antibody [mAbcam 8226] - Loading Control (**ab8226**), Anti-beta Actin antibody (**ab8227**)

製品の状態 Lyophilized

備考

- First try to dissolve a small amount of peptide in either water or buffer. The more charged residues on a peptide, the more soluble it is in aqueous solutions.
- If the peptide doesn't dissolve try an organic solvent e.g. DMSO, then dilute using water or buffer.
- Consider that any solvent used must be compatible with your assay. If a peptide does not dissolve and you need to recover it, lyophilise to remove the solvent.
- Gentle warming and sonication can effectively aid peptide solubilisation. If the solution is cloudy or has gelled the peptide may be in suspension rather than solubilised.
- Peptides containing cysteine are easily oxidised, so should be prepared in solution just prior to use.

前処理および保存

保存方法および安定性 Shipped at 4°C. Store at -20°C.
Information available upon request.

関連情報

機能

Actins are highly conserved proteins that are involved in various types of cell motility and are ubiquitously expressed in all eukaryotic cells.

関連疾患

Defects in ACTB are a cause of dystonia juvenile-onset (DYTJ) [MIM:607371]. DYTJ is a form of dystonia with juvenile onset. Dystonia is defined by the presence of sustained involuntary muscle contraction, often leading to abnormal postures. DYTJ patients manifest progressive, generalized, dopa-unresponsive dystonia, developmental malformations and sensory hearing loss.

配列類似性

Belongs to the actin family.

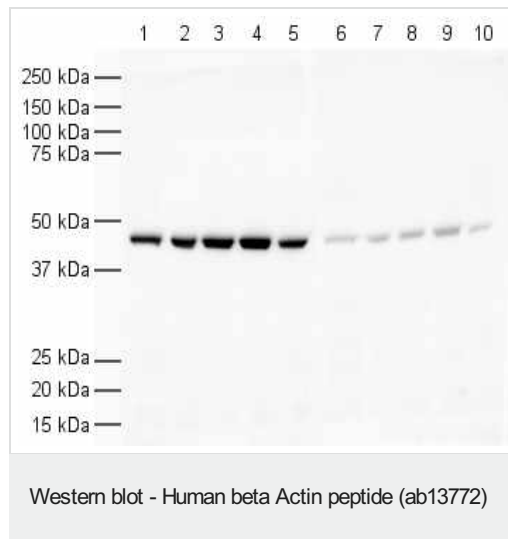
翻訳後修飾

ISGylated.

細胞内局在

Cytoplasm > cytoskeleton. Localized in cytoplasmic mRNP granules containing untranslated mRNAs.

画像



All lanes : Anti-beta Actin antibody ([ab8227](#)) at 1/1000 dilution

Lane 1 : HeLa nuclear lysate

Lane 2 : HeLa whole cell lysate

Lane 3 : A431 cell lysate

Lane 4 : Jurkat cell lysate

Lane 5 : HEK 293 cell lysate

Lane 6 : HeLa nuclear lysate with Human beta Actin peptide (ab13772) at 1 µg/ml

Lane 7 : HeLa whole cell lysate with Human beta Actin peptide (ab13772) at 1 µg/ml

Lane 8 : A431 cell lysate with Human beta Actin peptide (ab13772) at 1 µg/ml

Lane 9 : Jurkate cell lysate with Human beta Actin peptide (ab13772) at 1 µg/ml

Lane 10 : HEK 293 cell lysate with Human beta Actin peptide (ab13772) at 1 µg/ml

Lysates/proteins at 20 µg per lane.

Secondary

All lanes : Goat Anti-Rabbit IgG H&L (HRP) ([ab6721](#)) at 1/5000 dilution

Exposure time: 5 seconds

Please note: All products are "FOR RESEARCH USE ONLY. NOT FOR USE IN DIAGNOSTIC PROCEDURES"

Our Abpromise to you: Quality guaranteed and expert technical support

- Replacement or refund for products not performing as stated on the datasheet
- Valid for 12 months from date of delivery
- Response to your inquiry within 24 hours
- We provide support in Chinese, English, French, German, Japanese and Spanish
- Extensive multi-media technical resources to help you
- We investigate all quality concerns to ensure our products perform to the highest standards

If the product does not perform as described on this datasheet, we will offer a refund or replacement. For full details of the Abpromise, please visit <https://www.abcam.co.jp/abpromise> or contact our technical team.

Terms and conditions

- Guarantee only valid for products bought direct from Abcam or one of our authorized distributors