

Human BCL9 peptide ab37304

2 References [画像数 1](#)

製品の詳細

製品名	Human BCL9 peptide
精製度	> 90 % HPLC.
Animal free	No
由来	Synthetic
生物種	Human

特性

Our **Abpromise guarantee** covers the use of **ab37304** in the following tested applications.

The application notes include recommended starting dilutions; optimal dilutions/concentrations should be determined by the end user.

アプリケーション	Blocking - Blocking peptide for Anti-BCL9 antibody (ab37305) Western blot
----------	--

製品の状態	Liquid
-------	--------

備考	<p>- First try to dissolve a small amount of peptide in either water or buffer. The more charged residues on a peptide, the more soluble it is in aqueous solutions.</p> <p>- If the peptide doesn't dissolve try an organic solvent e.g. DMSO, then dilute using water or buffer.</p> <p>- Consider that any solvent used must be compatible with your assay. If a peptide does not dissolve and you need to recover it, lyophilise to remove the solvent.</p> <p>- Gentle warming and sonication can effectively aid peptide solubilisation. If the solution is cloudy or has gelled the peptide may be in suspension rather than solubilised.</p> <p>- Peptides containing cysteine are easily oxidised, so should be prepared in solution just prior to use.</p>
----	--

前処理および保存

保存方法および安定性	<p>Shipped at 4°C. Upon delivery aliquot and store at -20°C or -80°C. Avoid repeated freeze / thaw cycles.</p> <p>Information available upon request.</p>
------------	---

関連情報

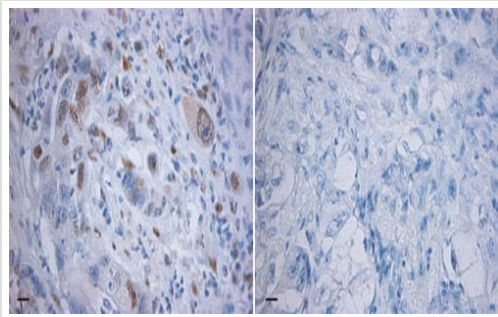
関連性

BCL9 is involved in signal transduction through the Wnt pathway. It promotes beta-catenin's transcriptional activity. BCL9 is associated with B-cell acute lymphoblastic leukemia. The overexpression of BCL9 may be of pathogenic significance in B-cell malignancies (referenced from swissprot and entrez gene).

細胞内局在

Nuclear

画像



BCL9 staining in Human colorectal cancer tissue, blocked with ab37304.

Left panel: **ab37305 - BCL9 antibody** alone. Right panel: **BCL9 antibody** + ab37304 - BCL9 peptide.

Blocking - Human BCL9 peptide (ab37304)

Image from Takada K et al., Sci Transl Med. 2012 Aug 22;4(148):148ra117. doi: 10.1126/scitranslmed.3003808.; Fig S1.; Sci Transl Med 22 August 2012; Vol. 4, Issue 148, p. 148ra117.

Please note: All products are "FOR RESEARCH USE ONLY. NOT FOR USE IN DIAGNOSTIC PROCEDURES"

Our Abpromise to you: Quality guaranteed and expert technical support

- Replacement or refund for products not performing as stated on the datasheet
- Valid for 12 months from date of delivery
- Response to your inquiry within 24 hours
- We provide support in Chinese, English, French, German, Japanese and Spanish
- Extensive multi-media technical resources to help you
- We investigate all quality concerns to ensure our products perform to the highest standards

If the product does not perform as described on this datasheet, we will offer a refund or replacement. For full details of the Abpromise, please visit <https://www.abcam.co.jp/abpromise> or contact our technical team.

Terms and conditions

- Guarantee only valid for products bought direct from Abcam or one of our authorized distributors