

### Anti-ZPI antibody [EPR23683-118] ab273627

リコンビナント RabMAb

画像数 10

#### 製品の概要

製品名	Anti-ZPI antibody [EPR23683-118]
製品の詳細	Rabbit monoclonal [EPR23683-118] to ZPI
由来種	Rabbit
アプリケーション	<b>適用あり:</b> IP, IHC-P, WB <b>適用なし:</b> Flow Cyt, ICC/IF or IHC-Fr
種交差性	<b>交差種:</b> Mouse, Rat, Human
免疫原	Recombinant fragment. This information is proprietary to Abcam and/or its suppliers.
ポジティブ・コントロール	WB: Human, mouse and rat plasma. Human liver cancer tissue lysate. Human serum. IHC-P: Human liver, pancreas and placenta tissue; Rat liver tissue. IP: Human plasma.
特記事項	This product is a recombinant monoclonal antibody, which offers several advantages including: <ul style="list-style-type: none"><li>- High batch-to-batch consistency and reproducibility</li><li>- Improved sensitivity and specificity</li><li>- Long-term security of supply</li><li>- Animal-free production</li></ul> For more information <a href="#">see here</a> . Our RabMAb <sup>®</sup> technology is a patented hybridoma-based technology for making rabbit monoclonal antibodies. For details on our patents, please refer to <a href="#">RabMAb<sup>®</sup> patents</a> .

#### 製品の特性

製品の状態	Liquid
保存方法	Shipped at 4°C. Store at +4°C short term (1-2 weeks). Upon delivery aliquot. Store at -20°C long term. Avoid freeze / thaw cycle.
バッファー	pH: 7.2 Preservative: 0.01% Sodium azide Constituents: PBS, 40% Glycerol (glycerin, glycerine), 0.05% BSA
精製度	Protein A purified
ポリ/モノ	モノクローナル
クローン名	EPR23683-118

アプリケーション

**The Abpromise guarantee** **Abpromise保証は、** 次のテスト済みアプリケーションにおけるab273627の使用に適用されず  
 アプリケーションノートには、推奨の開始希釈率がありますが、適切な希釈率につきましてはご検討ください。

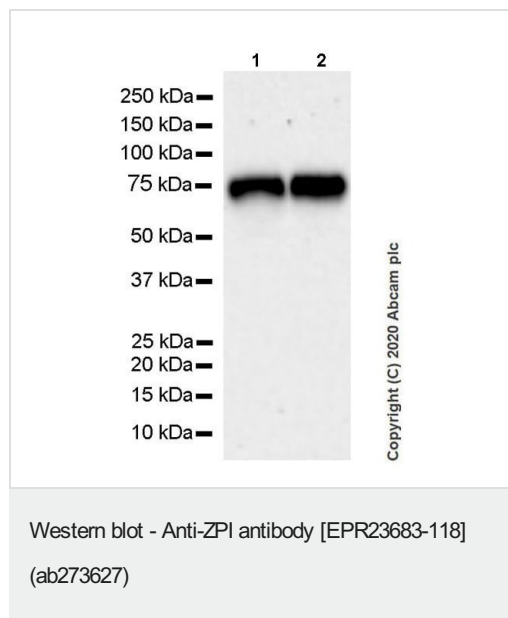
アプリケーション	Abreviews	特記事項
IP		1/30.
IHC-P		1/1000. Perform heat mediated antigen retrieval with Tris/EDTA buffer pH 9.0 before commencing with IHC staining protocol.
WB		1/1000. Detects a band of approximately 75 kDa (predicted molecular weight: 50 kDa).

追加情報

Is unsuitable for Flow Cyt, ICC/IF or IHC-Fr.

ターゲット情報

画像



**All lanes** : Anti-ZPI antibody [EPR23683-118] (ab273627) at 1/1000 dilution

**Lane 1** : Human serum

**Lane 2** : Human plasma

Lysates/proteins at 20 µl per lane.

**Secondary**

**All lanes** : VeriBlot for IP secondary antibody(HRP)([ab131366](#)) at 1/1000 dilution

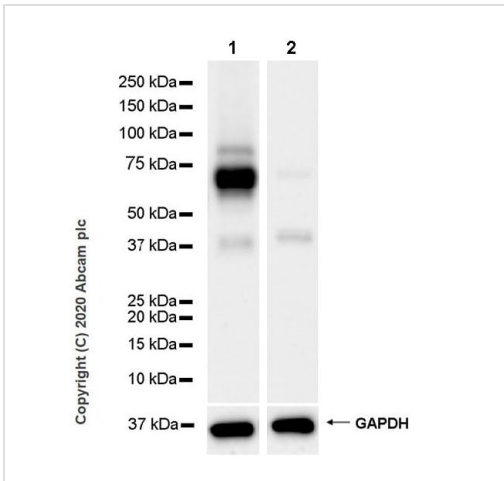
**Predicted band size:** 50 kDa

**Observed band size:** 75 kDa

Blocking and diluting buffer and concentration: 5% NFDM/TBST.

The expression profile observed is consistent with what has been described in the literature (PMID:10460162, 9689066).

Exposure time: 3 minutes.



Western blot - Anti-ZPI antibody [EPR23683-118] (ab273627)

**All lanes :** Anti-ZPI antibody [EPR23683-118] (ab273627) at 1/1000 dilution

**Lane 1 :** Human liver cancer tissue lysate

**Lane 2 :** Human brain tissue lysate

Lysates/proteins at 20 µg per lane.

**Secondary**

**All lanes :** VeriBlot for IP secondary antibody(HRP)([ab131366](#)) at 1/1000 dilution

**Predicted band size:** 50 kDa

**Observed band size:** 75 kDa

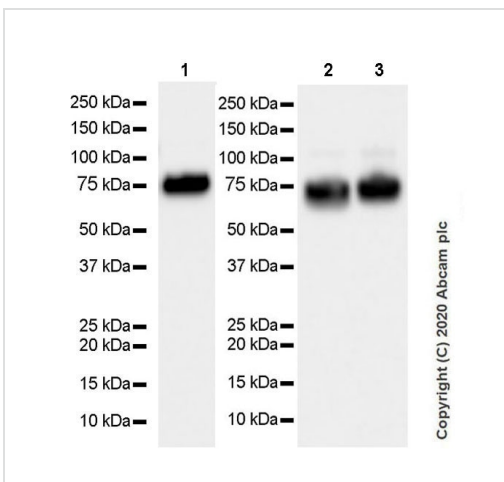
Blocking and diluting buffer and concentration: 5% NFD/MTBST.

The expression profile observed is consistent with what has been described in the literature (PMID: 10460162, 9689066).

**Negative control:** Human brain (PMID: 10460162).

This blot was developed using a higher sensitivity ECL substrate.

Exposure time: 37 seconds.



Western blot - Anti-ZPI antibody [EPR23683-118] (ab273627)

**All lanes :** Anti-ZPI antibody [EPR23683-118] (ab273627) at 1/1000 dilution

**Lane 1 :** Mouse plasma

**Lane 2 :** Rat serum

**Lane 3 :** Rat plasma

Lysates/proteins at 20 µl per lane.

**Secondary**

**All lanes :** Goat Anti-Rabbit IgG, (H+L), Peroxidase conjugated ([ab97051](#)) at 1/100000 dilution

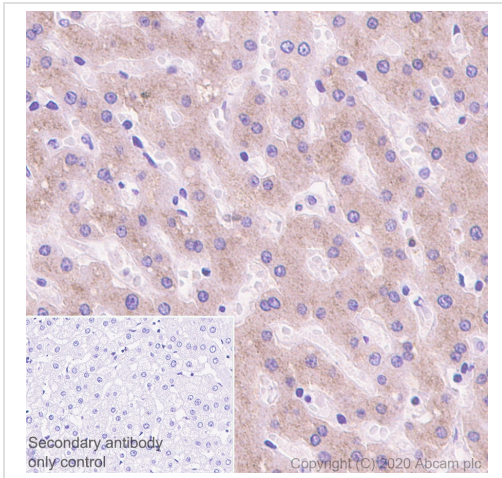
**Predicted band size:** 50 kDa

**Observed band size:** 75 kDa

Blocking and diluting buffer and concentration: 5% NFD/MTBST.

The expression profile observed is consistent with what has been described in the literature (PMID:10460162, 9689066).

Exposure times: Lane 1: 26 seconds; Lane 2-3: 5.5 seconds.

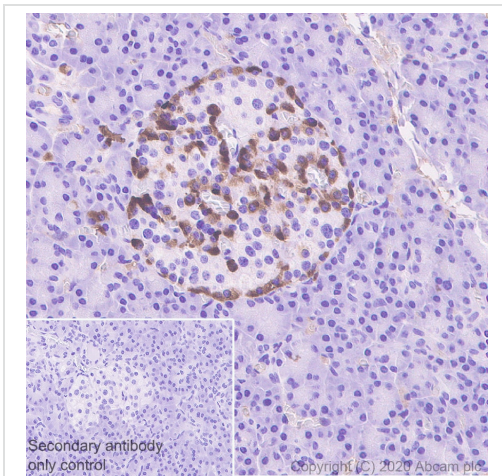


Immunohistochemistry (Formalin/PFA-fixed paraffin-embedded sections) - Anti-ZPI antibody [EPR23683-118] (ab273627)

Immunohistochemical analysis of paraffin-embedded human liver tissue labeling ZPI with ab273627 at 1/1000 dilution followed by ready to use Rabbit specific IHC polymer detection kit HRP/DAB (**ab209101**). Cytoplasmic staining on human liver (PMID: 20024489). The section was incubated with ab273627 for 30 mins at room temperature. The immunostaining was performed on a Leica Biosystems BOND<sup>®</sup> RX instrument. Counterstained with Hematoxylin.

Secondary antibody only control: Secondary antibody is ready to use Rabbit specific IHC polymer detection kit HRP/DAB (**ab209101**).

Heat mediated antigen retrieval with Tris-EDTA buffer (pH 9.0, epitope retrieval solution2) for 20 mins.

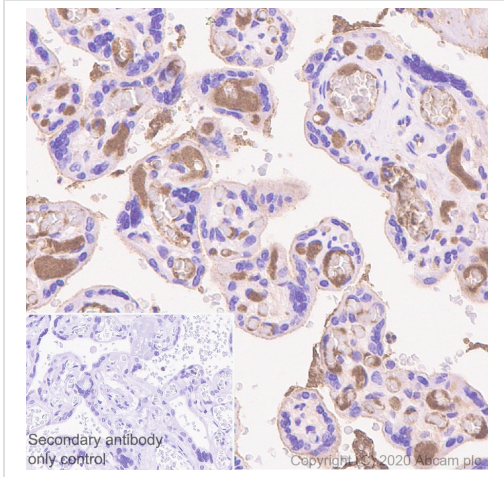


Immunohistochemistry (Formalin/PFA-fixed paraffin-embedded sections) - Anti-ZPI antibody [EPR23683-118] (ab273627)

Immunohistochemical analysis of paraffin-embedded human pancreas tissue labeling ZPI with ab273627 at 1/1000 dilution followed by ready to use Rabbit specific IHC polymer detection kit HRP/DAB (**ab209101**). Cytoplasmic staining on pancreas islets (PMID: 16728581). The section was incubated with ab273627 for 30 mins at room temperature. The immunostaining was performed on a Leica Biosystems BOND<sup>®</sup> RX instrument. Counterstained with Hematoxylin.

Secondary antibody only control: Secondary antibody is ready to use Rabbit specific IHC polymer detection kit HRP/DAB (**ab209101**).

Heat mediated antigen retrieval with Tris-EDTA buffer (pH 9.0, epitope retrieval solution2) for 20 mins.

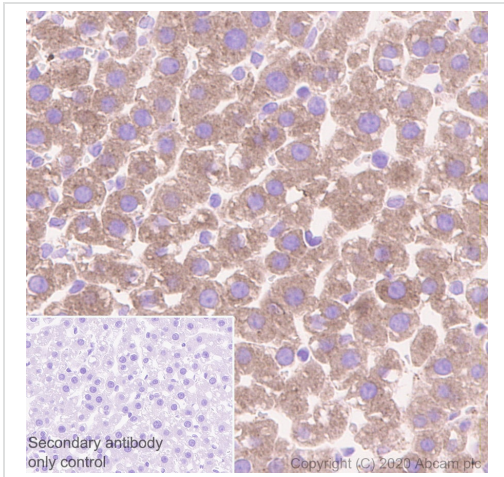


Immunohistochemistry (Formalin/PFA-fixed paraffin-embedded sections) - Anti-ZPI antibody [EPR23683-118] (ab273627)

Immunohistochemical analysis of paraffin-embedded human placenta tissue labeling ZPI with ab273627 at 1/1000 dilution followed by ready to use Rabbit specific IHC polymer detection kit HRP/DAB (**ab209101**). Positive staining on plasma in human placenta. The section was incubated with ab273627 for 30 mins at room temperature. The immunostaining was performed on a Leica Biosystems BOND® RX instrument. Counterstained with Hematoxylin.

Secondary antibody only control: Secondary antibody is ready to use Rabbit specific IHC polymer detection kit HRP/DAB (**ab209101**).

Heat mediated antigen retrieval with Tris-EDTA buffer (pH 9.0, epitope retrieval solution2) for 20 mins.



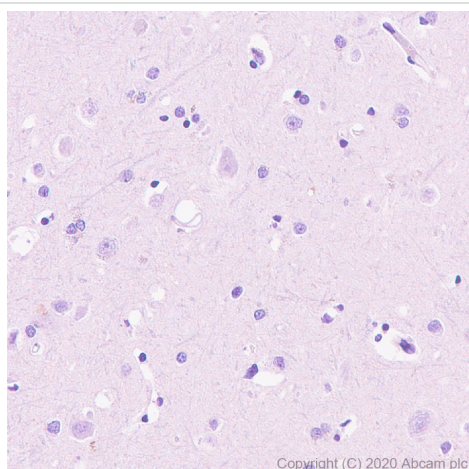
Immunohistochemistry (Formalin/PFA-fixed paraffin-embedded sections) - Anti-ZPI antibody [EPR23683-118] (ab273627)

Immunohistochemical analysis of paraffin-embedded rat liver tissue labeling ZPI with ab273627 at 1/1000 dilution followed by ready to use Rabbit specific IHC polymer detection kit HRP/DAB (**ab209101**). Cytoplasmic staining on rat liver (PMID: 20024489). The section was incubated with ab273627 for 30 mins at room temperature. The immunostaining was performed on a Leica Biosystems BOND® RX instrument. Counterstained with Hematoxylin.

Secondary antibody only control: Secondary antibody is ready to use Rabbit specific IHC polymer detection kit HRP/DAB (**ab209101**).

Heat mediated antigen retrieval with Tris-EDTA buffer (pH 9.0, epitope retrieval solution2) for 20 mins.



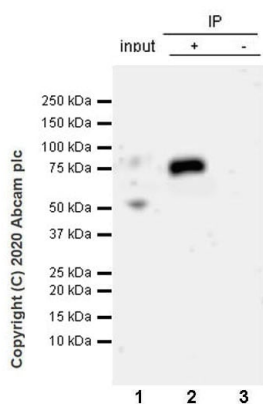


Immunohistochemistry (Formalin/PFA-fixed paraffin-embedded sections) - Anti-ZPI antibody [EPR23683-118] (ab273627)

Immunohistochemical analysis of paraffin-embedded human cerebrum tissue labeling ZPI with ab273627 at 1/1000 dilution followed by ready to use Rabbit specific IHC polymer detection kit HRP/DAB (**ab209101**). The section was incubated with ab273627 for 30 mins at room temperature. The immunostaining was performed on a Leica Biosystems BOND<sup>®</sup> RX instrument. Counterstained with Hematoxylin.

**Negative control:** No staining on human cerebrum (PMID: 20024489).

Heat mediated antigen retrieval with Tris-EDTA buffer (pH 9.0, epitope retrieval solution2) for 20 mins.



Immunoprecipitation - Anti-ZPI antibody [EPR23683-118] (ab273627)

ZPI was immunoprecipitated from 0.35 mg human plasma with ab273627 at 1/30 dilution (2µg in 0.35mg lysates). Western blot was performed on the immunoprecipitate using ab273627 at 1/1000 dilution. VeriBlot for IP Detection Reagent (HRP) (**ab131366**) was used at 1/5000 dilution.

**Lane 1:** Human plasma lysate 10µg

**Lane 2:** ab273627 IP in human plasma

**Lane 3:** Rabbit monoclonal IgG (**ab172730**) instead of ab273627 in human plasma

Blocking and dilution buffer and concentration: 5% NFDm/TBST.

Exposure time: 3 minutes.

The expression profile observed is consistent with what has been described in the literature (PMID:10460162).

### Why choose a recombinant antibody?



**Research with confidence**  
Consistent and reproducible results



**Long-term and scalable supply**  
Recombinant technology



**Success from the first experiment**  
Confirmed specificity



**Ethical standards compliant**  
Animal-free production

Anti-ZPI antibody [EPR23683-118] (ab273627)

**Please note:** All products are "FOR RESEARCH USE ONLY. NOT FOR USE IN DIAGNOSTIC PROCEDURES"

### Our Abpromise to you: Quality guaranteed and expert technical support

---

- Replacement or refund for products not performing as stated on the datasheet
- Valid for 12 months from date of delivery
- Response to your inquiry within 24 hours
- We provide support in Chinese, English, French, German, Japanese and Spanish
- Extensive multi-media technical resources to help you
- We investigate all quality concerns to ensure our products perform to the highest standards

If the product does not perform as described on this datasheet, we will offer a refund or replacement. For full details of the Abpromise, please visit <https://www.abcam.co.jp/abpromise> or contact our technical team.

### Terms and conditions

---

- Guarantee only valid for products bought direct from Abcam or one of our authorized distributors