

Anti-YY1 antibody [EPR4652] - Nuclear Loading Control ab109237

リコンビナント **RabMAb**

★★★★★ **10 Abreviews** **45 References** 画像数 14

製品の概要

製品名	Anti-YY1 antibody [EPR4652] - Nuclear Loading Control
製品の詳細	Rabbit monoclonal [EPR4652] to YY1 - Nuclear Loading Control
由来種	Rabbit
アプリケーション	適用あり: WB, IHC-P, ICC/IF, Flow Cyt (Intra), ChIC/CUT&RUN-seq 適用なし: ChIP or IP
種交差性	交差種: Mouse, Rat, Human
免疫原	Synthetic peptide. This information is proprietary to Abcam and/or its suppliers.
ポジティブ・コントロール	WB: HeLa, Daudi, Y79, and HuT-78 cell lysates, mouse and rat heart tissue. IHC-P: Human kidney, tonsil and cervix carcinoma tissues. ICC/IF: HeLa and HUT-78 cells.
特記事項	This product is a recombinant monoclonal antibody, which offers several advantages including: <ul style="list-style-type: none"> - High batch-to-batch consistency and reproducibility - Improved sensitivity and specificity - Long-term security of supply - Animal-free production For more information see here . Our RabMAb [®] technology is a patented hybridoma-based technology for making rabbit monoclonal antibodies. For details on our patents, please refer to RabMAb[®] patents .

製品の特性

製品の状態	Liquid
保存方法	Shipped at 4°C. Store at +4°C short term (1-2 weeks). Upon delivery aliquot. Store at -20°C. Stable for 12 months at -20°C.
バッファー	pH: 7.20 Preservative: 0.01% Sodium azide Constituents: 40% Glycerol, 59% PBS, 0.05% BSA
精製度	Protein A purified
ポリ/モノ	モノクローナル

クローン名 EPR4652

アイソタイプ IgG

アプリケーション

The Abpromise guarantee **Abpromise保証は、** 次のテスト済みアプリケーションにおけるab109237の使用に適用されます
アプリケーションノートには、推奨の開始希釈率がありますが、適切な希釈率につきましてはご検討ください。

アプリケーション	Abreviews	特記事項
WB	★★★★★ (7)	1/2000 - 1/10000. Predicted molecular weight: 45 kDa.
IHC-P	★★★★★ (1)	1/100. Perform heat mediated antigen retrieval with citrate buffer pH 6 before commencing with IHC staining protocol. See <u>IHC antigen retrieval protocols.</u> For unpurified use at 1/250 - 1/500.
ICC/IF		1/50. For unpurified use at 1/100 - 1/250.
Flow Cyt (Intra)		Use at an assay dependent concentration.
ChIC/CUT&RUN-seq		Use at an assay dependent concentration.

追加情報 Is unsuitable for ChIP or IP.

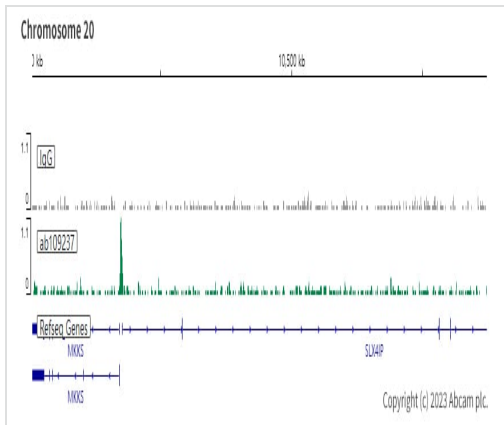
ターゲット情報

機能 Multifunctional transcription factor that exhibits positive and negative control on a large number of cellular and viral genes by binding to sites overlapping the transcription start site. May play an important role in development and differentiation. The function of YY1 as an activator or a repressor is specified by the presence of other proteins. For example it acts as a repressor in absence of adenovirus E1A protein but as an activator in its presence.

配列類似性 Belongs to the YY transcription factor family.
Contains 4 C2H2-type zinc fingers.

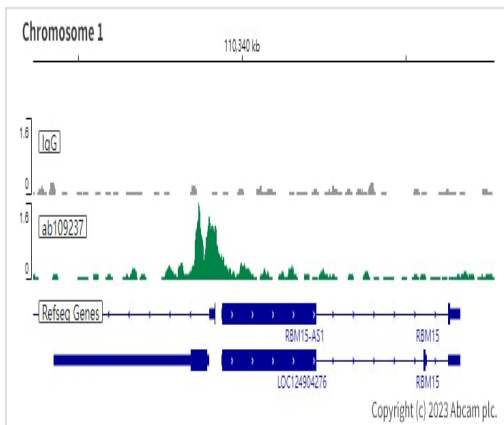
細胞内局在 Nucleus matrix. Associated with the nuclear matrix.

画像



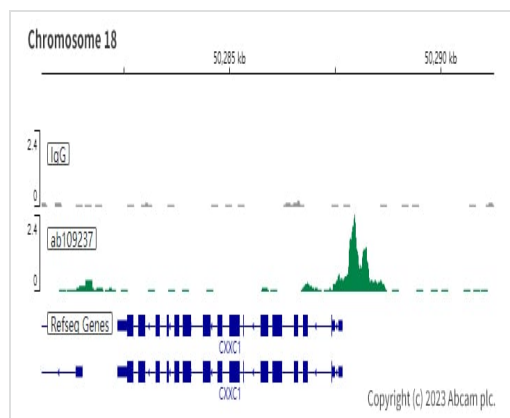
ChIP/CUT&RUN sequencing - Anti-YY1 antibody
[EPR4652] - Nuclear Loading Control (ab109237)

ChIP/CUT&RUN was performed using a pAG-MNase at a final concentration of 700 ng/μL, 2.5 x 10⁵ K-562 (Human chronic myelogenous leukemia lymphoblast) cells and 5 μg of ab109237 [EPR4652]. The resulting DNA was sequenced on the Illumina NovaSeq 6000 to a depth of 10 million reads. The negative IgG control **ab172730** is also shown. The University of Geneva owns patents relevant to ChIP (Chromatin Immuno-Cleavage) methods.



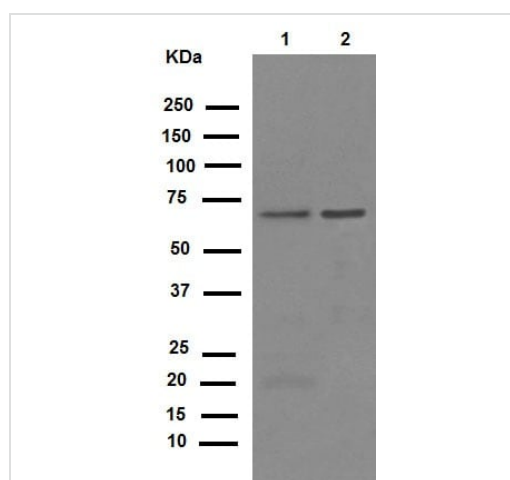
ChIP/CUT&RUN sequencing - Anti-YY1 antibody
[EPR4652] - Nuclear Loading Control (ab109237)

ChIP/CUT&RUN was performed using a pAG-MNase at a final concentration of 700 ng/μL, 2.5 x 10⁵ K-562 (Human chronic myelogenous leukemia lymphoblast) cells and 5 μg of ab109237 [EPR4652]. The resulting DNA was sequenced on the Illumina NovaSeq 6000 to a depth of 10 million reads. The negative IgG control **ab172730** is also shown. The University of Geneva owns patents relevant to ChIP (Chromatin Immuno-Cleavage) methods.



ChIP/CUT&RUN sequencing - Anti-YY1 antibody [EPR4652] - Nuclear Loading Control (ab109237)

ChIP/CUT&RUN was performed using a pAG-MNase at a final concentration of 700 ng/μL, 2.5 x 10⁵ K-562 (Human chronic myelogenous leukemia lymphoblast) cells and 5 μg of ab109237 [EPR4652]. The resulting DNA was sequenced on the Illumina NovaSeq 6000 to a depth of 10 million reads. The negative IgG control **ab172730** is also shown. The University of Geneva owns patents relevant to ChIP (Chromatin Immuno-Cleavage) methods.



Western blot - Anti-YY1 antibody [EPR4652] - Nuclear Loading Control (ab109237)

All lanes : Anti-YY1 antibody [EPR4652] - Nuclear Loading Control (ab109237) at 1/10000 dilution (purified)

Lane 1 : HeLa (Human epithelial cell line from cervix adenocarcinoma) cell lysate

Lane 2 : Daudi (Human Burkitt's lymphoma cell line) cell lysate

Lysates/proteins at 20 μg per lane.

Secondary

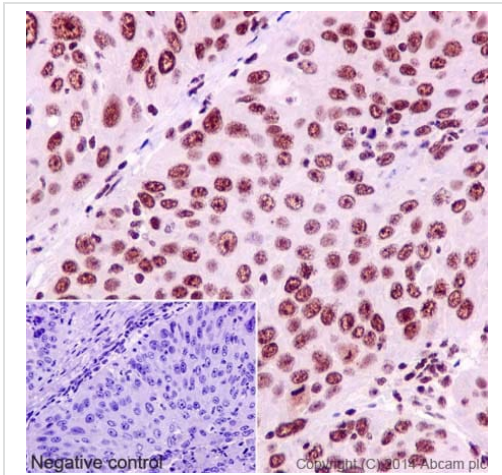
All lanes : Peroxidase-conjugated goat anti-rabbit IgG (H+L) at 1/1000 dilution

Predicted band size: 45 kDa

Observed band size: 68 kDa

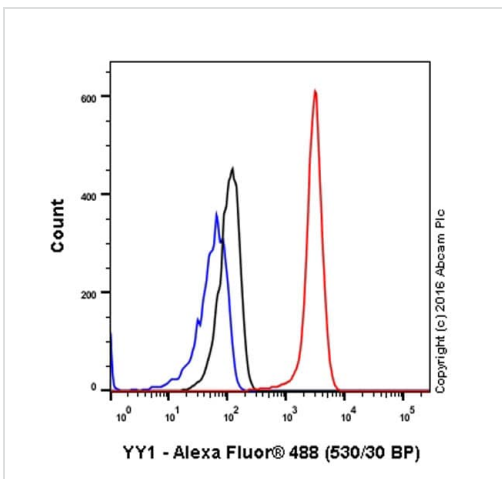
Blocking buffer and concentration: 5% NFDM/TBST.

Diluting buffer and concentration: 5% NFDM /TBST.



Immunohistochemistry (Formalin/PFA-fixed paraffin-embedded sections) - Anti-YY1 antibody [EPR4652]
- Nuclear Loading Control (ab109237)

Immunohistochemistry (Formalin/PFA-fixed paraffin-embedded sections) analysis of human cervix carcinoma tissue labelling YY1 with purified ab109237 at 1/500. Heat mediated antigen retrieval was performed using Tris/EDTA buffer pH 9. **ab97051**, a HRP-conjugated goat anti-rabbit IgG (H+L) was used as the secondary antibody (1/500). Negative control using PBS instead of primary antibody. Counterstained with hematoxylin.

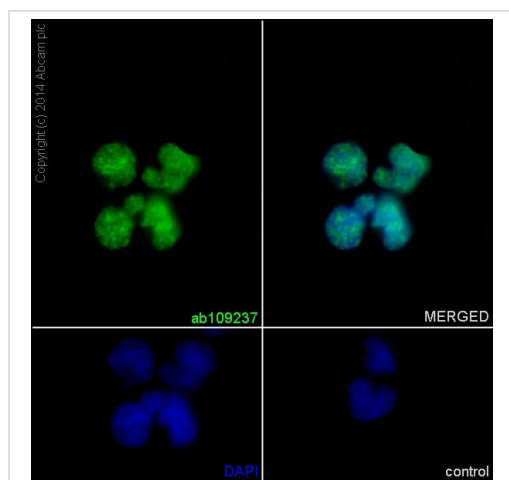


Flow Cytometry (Intracellular) - Anti-YY1 antibody [EPR4652] - Nuclear Loading Control (ab109237)

ab109237 staining YY1 in the human cell line HeLa (Human epithelial cell line from cervix adenocarcinoma) by intracellular flow cytometry. Cells were fixed with 4% paraformaldehyde, permeabilised with 90% methanol and the sample was incubated with the primary antibody at a dilution of 1/30. A goat anti rabbit IgG (Alexa Fluor® 488) at a dilution of 1/2000 was used as the secondary antibody.

Isotype control: Rabbit monoclonal IgG (Black).

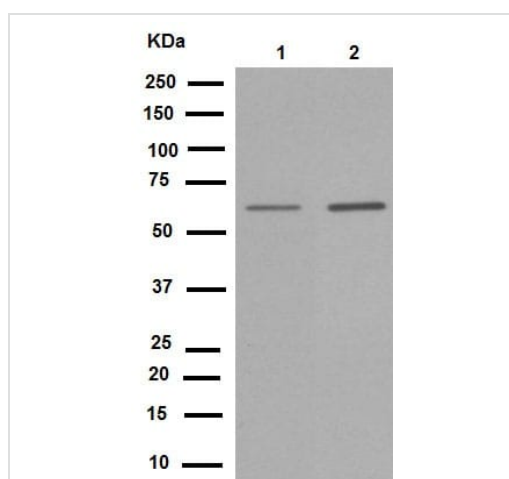
Unlabelled control: Cell without incubation with primary antibody and secondary antibody (Blue).



Immunocytochemistry/ Immunofluorescence - Anti-YY1 antibody [EPR4652] - Nuclear Loading Control (ab109237)

Immunocytochemistry/Immunofluorescence analysis of HUT-78 cells labelling YY1 with purified ab109237 at 1/50. Cells were fixed with 4% paraformaldehyde and permeabilized with 0.1% Triton X-100. **ab150077**, an Alexa Fluor® 488-conjugated goat anti-rabbit IgG (1/500) was used as the secondary antibody. DAPI (blue) was used as the nuclear counterstain.

Control: primary antibody (1/50) and secondary antibody, **ab150120**, an Alexa Fluor® 594-conjugated goat anti-mouse IgG (1/500).



Western blot - Anti-YY1 antibody [EPR4652] - Nuclear Loading Control (ab109237)

All lanes : Anti-YY1 antibody [EPR4652] - Nuclear Loading Control (ab109237) at 1/50000 dilution (purified)

Lane 1 : Y79 (Human retinoblastoma cell line) cell lysate

Lane 2 : HuT-78 cell lysate

Lysates/proteins at 10 µg per lane.

Secondary

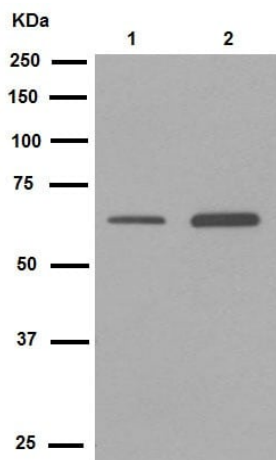
All lanes : Peroxidase-conjugated goat anti-rabbit IgG (H+L) at 1/1000 dilution

Predicted band size: 45 kDa

Observed band size: 68 kDa

Blocking buffer and concentration: 5% NFDM/TBST.

Diluting buffer and concentration: 5% NFDM /TBST.



Western blot - Anti-YY1 antibody [EPR4652] -
Nuclear Loading Control (ab109237)

All lanes : Anti-YY1 antibody [EPR4652] - Nuclear Loading Control (ab109237) at 1/2000 dilution (purified)

Lane 1 : Mouse heart

Lane 2 : Rat heart

Lysates/proteins at 10 µg per lane.

Secondary

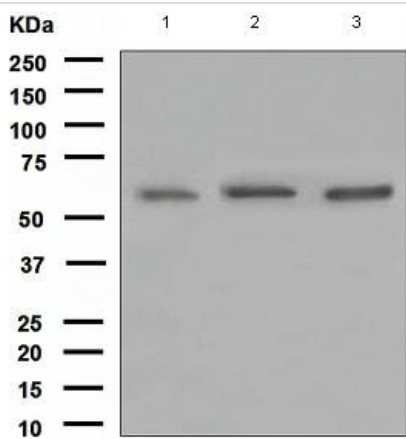
All lanes : Peroxidase-conjugated goat anti-rabbit IgG (H+L) at 1/1000 dilution

Predicted band size: 45 kDa

Observed band size: 68 kDa

Blocking buffer and concentration: 5% NFDM/TBST.

Diluting buffer and concentration: 5% NFDM /TBST.



Western blot - Anti-YY1 antibody [EPR4652] -
Nuclear Loading Control (ab109237)

All lanes : Anti-YY1 antibody [EPR4652] - Nuclear Loading Control (ab109237) at 1/1000 dilution (unpurified)

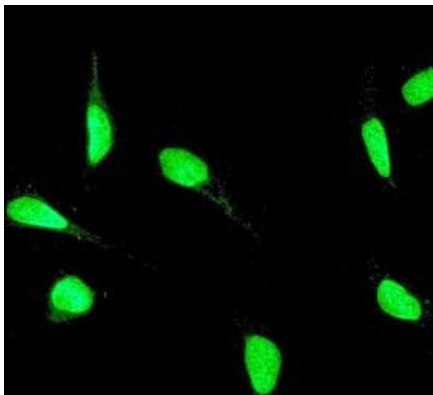
Lane 1 : Daudi (Human Burkitt's lymphoma cell line) cell lysate

Lane 2 : Y79 (Human retinoblastoma cell line) cell lysate

Lane 3 : HuT-78 cell lysate

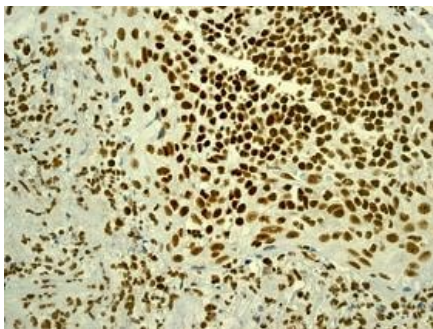
Lysates/proteins at 10 µg per lane.

Predicted band size: 45 kDa



Immunocytochemistry/Immunofluorescence analysis of HeLa cells labelling YY1 with unpurified ab109237 at 1/100.

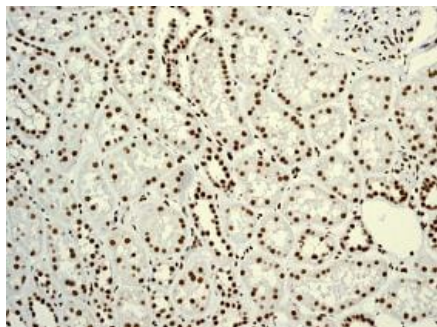
Immunocytochemistry/ Immunofluorescence - Anti-YY1 antibody [EPR4652] - Nuclear Loading Control (ab109237)



Immunohistochemistry (Formalin/PFA-fixed paraffin-embedded sections) analysis human tonsil tissue labelling YY1 with unpurified ab109237 at 1/250.

Perform heat mediated antigen retrieval with citrate buffer pH 6 before commencing with IHC staining protocol.

Immunohistochemistry (Formalin/PFA-fixed paraffin-embedded sections) - Anti-YY1 antibody [EPR4652] - Nuclear Loading Control (ab109237)



Immunohistochemistry (Formalin/PFA-fixed paraffin-embedded sections) - Anti-YY1 antibody [EPR4652]
- Nuclear Loading Control (ab109237)

Immunohistochemistry (Formalin/PFA-fixed paraffin-embedded sections) analysis human kidney tissue labelling YY1 with unpurified ab109237 at 1/250.

Perform heat mediated antigen retrieval with citrate buffer pH 6 before commencing with IHC staining protocol.

Why choose a recombinant antibody?



Research with confidence
Consistent and reproducible results



Long-term and scalable supply
Recombinant technology



Success from the first experiment
Confirmed specificity



Ethical standards compliant
Animal-free production

Anti-YY1 antibody [EPR4652] - Nuclear Loading Control (ab109237)

Please note: All products are "FOR RESEARCH USE ONLY. NOT FOR USE IN DIAGNOSTIC PROCEDURES"

Our Abpromise to you: Quality guaranteed and expert technical support

- Replacement or refund for products not performing as stated on the datasheet
- Valid for 12 months from date of delivery
- Response to your inquiry within 24 hours
- We provide support in Chinese, English, French, German, Japanese and Spanish
- Extensive multi-media technical resources to help you
- We investigate all quality concerns to ensure our products perform to the highest standards

If the product does not perform as described on this datasheet, we will offer a refund or replacement. For full details of the Abpromise, please visit <https://www.abcam.co.jp/abpromise> or contact our technical team.

Terms and conditions

- Guarantee only valid for products bought direct from Abcam or one of our authorized distributors