

### Anti-YB1 antibody [EP2706Y] ab76540

RabMAb<sup>®</sup>

★★★★★ [1 Abreviews](#) [4 References](#) [画像数 2](#)

#### 製品の概要

製品名	Anti-YB1 antibody [EP2706Y]
製品の詳細	Rabbit monoclonal [EP2706Y] to YB1
由来種	Rabbit
アプリケーション	<b>適用あり:</b> Flow Cyt (Intra), WB <b>適用なし:</b> ICC/IF or IHC-P
種交差性	<b>交差種:</b> Human
免疫原	Synthetic peptide. This information is proprietary to Abcam and/or its suppliers.
ポジティブ・コントロール	HeLa, 293T, Jurkat and MCF7 cell lysates; permeabilized HeLa cells.
特記事項	<p>Our RabMAb<sup>®</sup> technology is a patented hybridoma-based technology for making rabbit monoclonal antibodies. For details on our patents, please refer to <a href="#">RabMAb<sup>®</sup> patents</a>.</p> <p>The Life Science industry has been in the grips of a reproducibility crisis for a number of years. Abcam is leading the way in addressing this with our range of recombinant monoclonal antibodies and knockout edited cell lines for gold-standard validation. Please check that this product meets your needs before purchasing.</p> <p>If you have any questions, special requirements or concerns, please send us an inquiry and/or contact our Support team ahead of purchase. Recommended alternatives for this product can be found below, along with publications, customer reviews and Q&amp;As</p> <p>Mouse, Rat: We have preliminary internal testing data to indicate this antibody may not react with these species. Please contact us for more information.</p>

#### 製品の特性

製品の状態	Liquid
保存方法	Shipped at 4°C. Upon delivery aliquot and store at -20°C. Avoid freeze / thaw cycles.
バッファー	pH: 7.20 Preservative: 0.05% Sodium azide Constituents: 0.1% BSA, 40% Glycerol (glycerin, glycerine), 9.85% Tris glycine, 50% Tissue culture supernatant
精製度	Protein A purified

ポリ/モノ	モノクローナル
クローン名	EP2706Y
アイソタイプ	IgG

## アプリケーション

**The Abpromise guarantee** **Abpromise保証は、次のテスト済みアプリケーションにおけるab76540の使用に適用されず**  
 アプリケーションノートには、推奨の開始希釈率がありますが、適切な希釈率につきましてはご検討ください。

アプリケーション	Abreviews	特記事項
Flow Cyt (Intra)		1/60. <b>ab172730</b> - Rabbit monoclonal IgG, is suitable for use as an isotype control with this antibody.
WB	★★★★★ (1)	1/10000 - 1/20000. Predicted molecular weight: 36 kDa.

**追加情報** Is unsuitable for ICC/IF or IHC-P.

## ターゲット情報

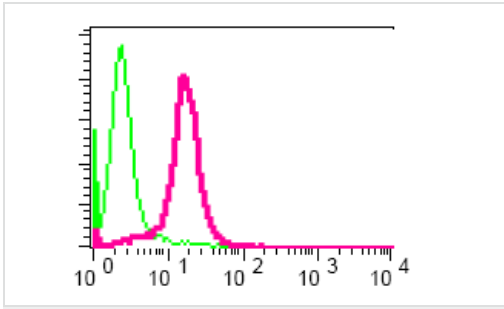
**機能** Mediates pre-mRNA alternative splicing regulation. Binds to splice sites in pre-mRNA and regulates splice site selection. Binds and stabilizes cytoplasmic mRNA. Contributes to the regulation of translation by modulating the interaction between the mRNA and eukaryotic initiation factors (By similarity). Regulates the transcription of numerous genes. Its transcriptional activity on the multidrug resistance gene MDR1 is enhanced in presence of the APEX1 acetylated form at 'Lys-6' and 'Lys-7'. Binds to promoters that contain a Y-box (5'-CTGATTGGCCAA-3'), such as MDR1 and HLA class II genes. Promotes separation of DNA strands that contain mismatches or are modified by cisplatin. Has endonucleolytic activity and can introduce nicks or breaks into double-stranded DNA (in vitro). May play a role in DNA repair. Component of the CRD-mediated complex that promotes MYC mRNA stability.  
 The secreted form acts as an extracellular mitogen and stimulates cell migration and proliferation.

**配列類似性** Contains 1 CSD (cold-shock) domain.

**翻訳後修飾** Ubiquitinated by RBBP6; leading to a decrease of YBX1 transactivational ability.  
 In the absence of phosphorylation the protein is retained in the cytoplasm.  
 Cleaved by a 20S proteasomal protease in response to agents that damage DNA. Cleavage takes place in the absence of ubiquitination and ATP. The resulting N-terminal fragment accumulates in the nucleus.

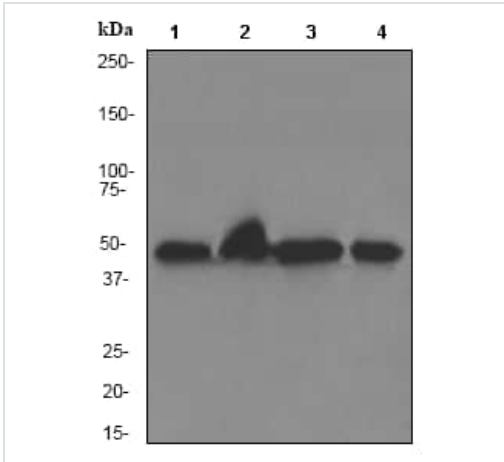
**細胞内局在** Cytoplasm. Nucleus. Cytoplasmic granule. Secreted. Localized in cytoplasmic mRNP granules containing untranslated mRNAs. Shuttles between nucleus and cytoplasm. Predominantly cytoplasmic in proliferating cells. Cytotoxic stress and DNA damage enhance translocation to the nucleus. Localized with DDX1, MBNL1 and TIAL1 in stress granules upon stress. Secreted by mesangial and monocytic cells after inflammatory challenges. Translocates from the cytoplasm to the nucleus after and colocalizes with APEX1 in nuclear speckles after genotoxic stress.

## 画像



Flow Cytometry (Intracellular) - Anti-YB1 antibody [EP2706Y] (ab76540)

Intracellular flow cytometric analysis of permeabilized HeLa cells using ab76540 at 1/60 dilution (red) or a rabbit IgG (negative) (green)



Western blot - Anti-YB1 antibody [EP2706Y] (ab76540)

**All lanes** : Anti-YB1 antibody [EP2706Y] (ab76540) at 1/20000 dilution

**Lane 1** : HeLa cell lysate

**Lane 2** : 293T cell lysate

**Lane 3** : Jurkat cell lysate

**Lane 4** : MCF7 cell lysate

Lysates/proteins at 10 µg per lane.

**Secondary**

**All lanes** : goat anti-rabbit HRP at 1/1000 dilution

**Predicted band size:** 36 kDa

**Observed band size:** 47 kDa

**Please note:** All products are "FOR RESEARCH USE ONLY. NOT FOR USE IN DIAGNOSTIC PROCEDURES"

**Our Abpromise to you: Quality guaranteed and expert technical support**

- Replacement or refund for products not performing as stated on the datasheet
- Valid for 12 months from date of delivery
- Response to your inquiry within 24 hours
- We provide support in Chinese, English, French, German, Japanese and Spanish
- Extensive multi-media technical resources to help you
- We investigate all quality concerns to ensure our products perform to the highest standards

If the product does not perform as described on this datasheet, we will offer a refund or replacement. For full details of the Abpromise, please visit <https://www.abcam.co.jp/abpromise> or contact our technical team.

**Terms and conditions**

- Guarantee only valid for products bought direct from Abcam or one of our authorized distributors