


Anti-XRCC1 antibody ab9147

★★★★★ [2 Abreviews](#) [15 References](#) [画像数 1](#)

製品の概要

製品名	Anti-XRCC1 antibody
製品の詳細	Rabbit polyclonal to XRCC1
由来種	Rabbit
特異性	This antibody recognises human XRCC1 (x-ray cross complementing factor -1), a base excision repair protein.
アプリケーション	適用あり: WB
種交差性	交差種: Human 交差が予測される動物種: Rat, Horse, Guinea pig, Hamster, Cow, Dog, Pig, Chimpanzee, Ferret, Rhesus monkey, Gorilla, Orangutan 
免疫原	Synthetic peptide (Human) conjugated to KLH - which represented a portion within the last 100 amino acids of the human X-ray Repair Cross Complementing Protein 1 (GenBank PID 11425942).
特記事項	<p>Recently XRCC-1 has been shown to be physically associated with other DNA repair enzymes, including PARP, DNA ligase III and DNA polymerase beta.</p> <p>The Life Science industry has been in the grips of a reproducibility crisis for a number of years. Abcam is leading the way in addressing this with our range of recombinant monoclonal antibodies and knockout edited cell lines for gold-standard validation. Please check that this product meets your needs before purchasing.</p> <p>If you have any questions, special requirements or concerns, please send us an inquiry and/or contact our Support team ahead of purchase. Recommended alternatives for this product can be found below, along with publications, customer reviews and Q&As</p>

製品の特性

製品の状態	Liquid
保存方法	Shipped at 4°C. Upon delivery aliquot and store at -20°C. Avoid freeze / thaw cycles.
バッファー	pH: 7 Preservative: 0.1% Sodium azide Constituents: 0.021% PBS, 1.764% Sodium citrate, 1.815% Tris
精製度	Immunogen affinity purified
特記事項 (精製)	Antibodies were affinity purified using the peptide immobilized on solid support. Antibody

concentration was determined by extinction coefficient: absorbance at 280 nm of 1.4 equals 1.0 mg of IgG.

ポリ/モノ

ポリクローナル

アイソタイプ

IgG

アプリケーション

The Abpromise guarantee

Abpromise保証は、次のテスト済みアプリケーションにおけるab9147の使用に適用されます

アプリケーションノートには、推奨の開始希釈率がありますが、適切な希釈率につきましてはご検討ください。

アプリケーション	Abreviews	特記事項
WB	★★★★★ (1)	1/1000 - 1/10000. Detects a band of approximately 90 kDa (predicted molecular weight: 70 kDa).

ターゲット情報

機能

Corrects defective DNA strand-break repair and sister chromatid exchange following treatment with ionizing radiation and alkylating agents.

配列類似性

Contains 2 BRCT domains.

翻訳後修飾

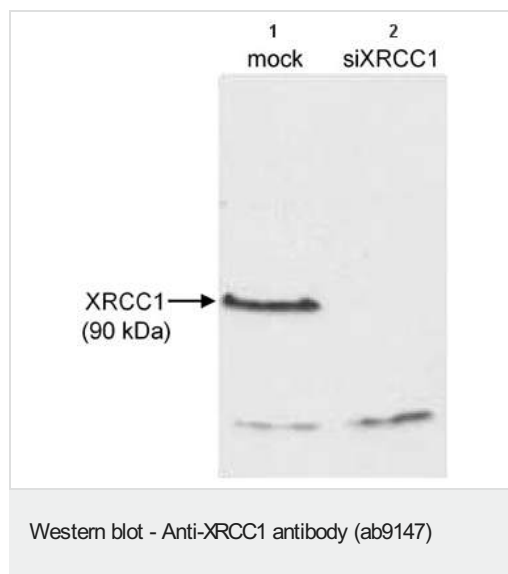
Phosphorylation of Ser-371 causes dimer dissociation. Phosphorylation by CK2 promotes interaction with APTX and APLF.

Sumoylated.

細胞内局在

Nucleus. Accumulates at sites of DNA damage.

画像



All lanes : Anti-XRCC1 antibody (ab9147) at 1 µg/ml

Lane 1 : Whole cell extract (50mcg) from mock treated HeLa cells.

Lane 2 : Whole cell extract (50mcg) from siRNA treated HeLa cells.

Predicted band size: 70 kDa

Observed band size: 76,90 kDa

Detection: ECL.

Please note: All products are "FOR RESEARCH USE ONLY. NOT FOR USE IN DIAGNOSTIC PROCEDURES"

Our Abpromise to you: Quality guaranteed and expert technical support

- Replacement or refund for products not performing as stated on the datasheet
- Valid for 12 months from date of delivery
- Response to your inquiry within 24 hours

- We provide support in Chinese, English, French, German, Japanese and Spanish
- Extensive multi-media technical resources to help you
- We investigate all quality concerns to ensure our products perform to the highest standards

If the product does not perform as described on this datasheet, we will offer a refund or replacement. For full details of the Abpromise, please visit <https://www.abcam.co.jp/abpromise> or contact our technical team.

Terms and conditions

- Guarantee only valid for products bought direct from Abcam or one of our authorized distributors