

Anti-XPG antibody ab224815

1 References [画像数 3](#)

製品の概要

製品名	Anti-XPG antibody
製品の詳細	Rabbit polyclonal to XPG
由来種	Rabbit
アプリケーション	適用あり: IHC-P, IP, WB
種交差性	交差種: Human
免疫原	Synthetic peptide within Human XPG aa 650-700. The exact sequence is proprietary. P28715 Database link: NP_000114.2
ポジティブ・コントロール	WB: HeLa whole cell lysate (ab150035). IP: HeLa whole cell lysate (ab150035). IHC-P: Human ovarian carcinoma tissue.
特記事項	<p>The Life Science industry has been in the grips of a reproducibility crisis for a number of years. Abcam is leading the way in addressing this with our range of recombinant monoclonal antibodies and knockout edited cell lines for gold-standard validation. Please check that this product meets your needs before purchasing.</p> <p>If you have any questions, special requirements or concerns, please send us an inquiry and/or contact our Support team ahead of purchase. Recommended alternatives for this product can be found below, along with publications, customer reviews and Q&As</p>

製品の特性

製品の状態	Liquid
保存方法	Shipped at 4°C. Store at +4°C short term (1-2 weeks). Upon delivery aliquot. Store at -20°C long term. Avoid freeze / thaw cycle.
バッファー	pH: 6.8 Preservative: 0.09% Sodium azide Constituents: 0.1% BSA, Tris buffered saline
精製度	Immunogen affinity purified
ポリ/モノ	ポリクローナル
アイソタイプ	IgG

アプリケーション

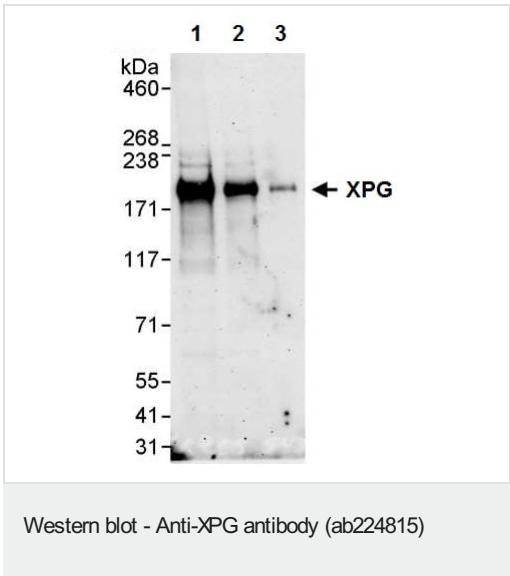
The Abpromise guarantee **Abpromise保証は、次のテスト済みアプリケーションにおけるab224815の使用に適用されます**
アプリケーションノートには、推奨の開始希釈率がありますが、適切な希釈率につきましてはご検討ください。

アプリケーション	Abreviews	特記事項
IHC-P		1/100 - 1/500. Perform heat mediated antigen retrieval with citrate buffer pH 6 before commencing with IHC staining protocol.
IP		Use at 2-5 µg/mg of lysate.
WB		1/2000 - 1/10000. Predicted molecular weight: 133 kDa.

ターゲット情報

機能	Single-stranded structure-specific DNA endonuclease involved in DNA excision repair. Makes the 3'incision in DNA nucleotide excision repair (NER). Acts as a cofactor for a DNA glycosylase that removes oxidized pyrimidines from DNA. May also be involved in transcription-coupled repair of this kind of damage, in transcription by RNA polymerase II, and perhaps in other processes too.
関連疾患	Defects in ERCC5 are the cause of xeroderma pigmentosum complementation group G (XP-G) [MIM:278780]; also known as xeroderma pigmentosum VII (XP7). Xeroderma pigmentosum is an autosomal recessive pigmentary skin disorder characterized by solar hypersensitivity of the skin, high predisposition for developing cancers on areas exposed to sunlight and, in some cases, neurological abnormalities. Some XP-G patients present features of Cockayne syndrome, including dwarfism, sensorineural deafness, microcephaly, mental retardation, pigmentary retinopathy, ataxia, decreased nerve conduction velocities.
配列類似性	Belongs to the XPG/RAD2 endonuclease family. XPG subfamily.
細胞内局在	Nucleus.

画像



All lanes : Anti-XPG antibody (ab224815) at 0.04 µg/ml

Lane 1 : HeLa (human epithelial cell line from cervix adenocarcinoma) whole cell lysate at 50 µg

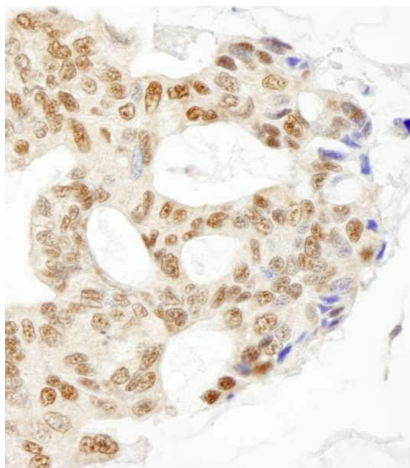
Lane 2 : HeLa (human epithelial cell line from cervix adenocarcinoma) whole cell lysate at 15 µg

Lane 3 : HeLa (human epithelial cell line from cervix adenocarcinoma) whole cell lysate at 5 µg

Developed using the ECL technique.

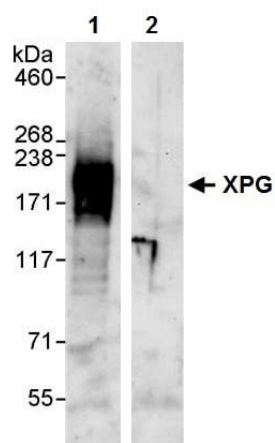
Predicted band size: 133 kDa

Exposure time: 3 minutes



Immunohistochemistry (Formalin/PFA-fixed paraffin-embedded sections) - Anti-XPG antibody (ab224815)

Formalin-fixed, paraffin-embedded human ovarian carcinoma tissue stained for XPG using ab224815 at 1/200 dilution in immunohistochemical analysis. Detection: DAB staining.



Immunoprecipitation - Anti-XPG antibody (ab224815)

XPG was immunoprecipitated from HeLa (human epithelial cell line from cervix adenocarcinoma) whole cell lysate (1 mg for IP, 20% of IP loaded) with ab224815 at 3 µg/mg lysate. Western blot was performed from the immunoprecipitate using ab224815 at 1 µg/ml.

Lane 1: ab224815 IP in HeLa whole cell lysate.

Lane 2: Control IgG IP in HeLa whole cell lysate.

Detection: Chemiluminescence with exposure time of 30 seconds.

Please note: All products are "FOR RESEARCH USE ONLY. NOT FOR USE IN DIAGNOSTIC PROCEDURES"

Our Abpromise to you: Quality guaranteed and expert technical support

- Replacement or refund for products not performing as stated on the datasheet
- Valid for 12 months from date of delivery
- Response to your inquiry within 24 hours
- We provide support in Chinese, English, French, German, Japanese and Spanish
- Extensive multi-media technical resources to help you
- We investigate all quality concerns to ensure our products perform to the highest standards

If the product does not perform as described on this datasheet, we will offer a refund or replacement. For full details of the Abpromise, please visit <https://www.abcam.co.jp/abpromise> or contact our technical team.

Terms and conditions

- Guarantee only valid for products bought direct from Abcam or one of our authorized distributors