


Anti-WWP1 antibody ab104440

1 References [画像数 2](#)

製品の概要

製品名	Anti-WWP1 antibody
製品の詳細	Rabbit polyclonal to WWP1
由来種	Rabbit
アプリケーション	適用あり: WB, IP
種交差性	交差種: Human 交差が予測される動物種: Chimpanzee 
免疫原	Synthetic peptide, corresponding to a region between amino acids 200 - 250 of Human WWP1 (NP_008944.1).
ポジティブ・コントロール	HeLa whole cell lysate
特記事項	<p>The Life Science industry has been in the grips of a reproducibility crisis for a number of years. Abcam is leading the way in addressing this with our range of recombinant monoclonal antibodies and knockout edited cell lines for gold-standard validation. Please check that this product meets your needs before purchasing.</p> <p>If you have any questions, special requirements or concerns, please send us an inquiry and/or contact our Support team ahead of purchase. Recommended alternatives for this product can be found below, along with publications, customer reviews and Q&As</p>

製品の特性

製品の状態	Liquid
保存方法	Shipped at 4°C. Upon delivery aliquot and store at -20°C. Avoid freeze / thaw cycles.
バッファー	pH: 7 Preservative: 0.09% Sodium azide Constituent: Tris citrate/phosphate
精製度	Immunogen affinity purified
特記事項 (精製)	ab104440 is affinity purified using an epitope specific to WWP1 immobilized on solid support
ポリ/モノ	ポリクローナル
アイソタイプ	IgG

The Abpromise guarantee Abpromise保証は、 次のテスト済みアプリケーションにおけるab104440の使用に適用されます
アプリケーションノートには、推奨の開始希釈率がありますが、適切な希釈率につきましてはご検討ください。

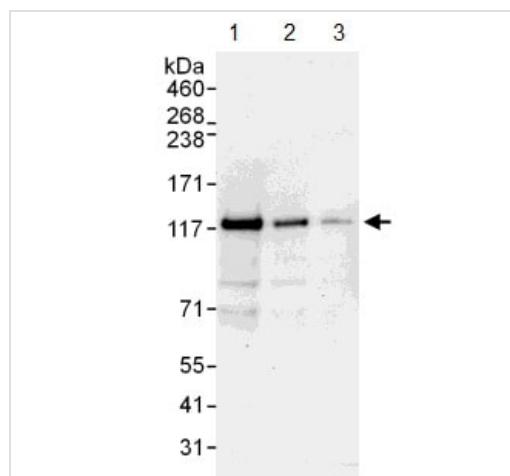
アプリケーション	Abreviews	特記事項
WB		1/2000 - 1/10000. Predicted molecular weight: 105 kDa.
IP		Use at 2-5 µg/mg of lysate.

ターゲット情報

関連性 WWP1 is an E3 ubiquitin ligase and belongs to a family of NEDD4-like proteins. WWP1 contains 4 tandem WW domains and a HECT (homologous to the E6-associated protein carboxyl terminus) domain. WW domain-containing proteins are found in all eukaryotes and play an important role in the regulation of a wide variety of cellular functions such as protein degradation, transcription, and RNA splicing. The HECT domain of WWP1 has been implicated in regulating the localization and stability of p53 – inhibition of WWP1 results in a decrease in p53 expression, whilst WWP1 mediated stabilization of p53 appears to be associated with an accumulation of cytoplasmic p53. WWP1 also negatively regulates the TGF beta tumor suppressor pathway by inactivating its molecular components (SMAD2, SMAD4 and TGFbetaR1). WWP1 has been implicated in both breast and prostate cancers.

細胞内局在 Cell Membrane, Cytoplasmic and Nuclear

画像



Western blot - Anti-WWP1 antibody (ab104440)

All lanes : Anti-WWP1 antibody (ab104440) at 0.1 µg/ml

Lane 1 : HeLa whole cell lysate at 50 µg

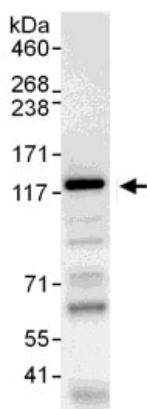
Lane 2 : HeLa whole cell lysate at 15 µg

Lane 3 : HeLa whole cell lysate at 5 µg

Developed using the ECL technique.

Predicted band size: 105 kDa

Exposure time: 30 seconds



Immunoprecipitation - Anti-WWP1 antibody
(ab104440)

Detection of Human WWP1 by Western blot of immunoprecipitates prepared from HeLa whole cell lysates (at 1 mg for IP, 20% of IP loaded) using ab104440 at 3 µg/mg lysate for immunoprecipitation and at 1 µg/ml for subsequent blotting.

Detection by chemiluminescence with an exposure time of 10 seconds.

Please note: All products are "FOR RESEARCH USE ONLY. NOT FOR USE IN DIAGNOSTIC PROCEDURES"

Our Abpromise to you: Quality guaranteed and expert technical support

- Replacement or refund for products not performing as stated on the datasheet
- Valid for 12 months from date of delivery
- Response to your inquiry within 24 hours
- We provide support in Chinese, English, French, German, Japanese and Spanish
- Extensive multi-media technical resources to help you
- We investigate all quality concerns to ensure our products perform to the highest standards

If the product does not perform as described on this datasheet, we will offer a refund or replacement. For full details of the Abpromise, please visit <https://www.abcam.co.jp/abpromise> or contact our technical team.

Terms and conditions

- Guarantee only valid for products bought direct from Abcam or one of our authorized distributors