




Anti-WRNIP1/WHIP antibody ab18729

画像数 2

製品の概要

製品名	Anti-WRNIP1/WHIP antibody
製品の詳細	Goat polyclonal to WRNIP1/WHIP
由来種	Goat
アプリケーション	適用あり: IHC-P, WB
種交差性	交差種: Human 交差が予測される動物種: Mouse, Rat, Cow, Dog 
免疫原	Synthetic peptide corresponding to Human WRNIP1/WHIP aa 652-665 (C terminal). Sequence: EELRGVDFFKQRRG <div>  Run BLAST with  Run BLAST with </div>
特記事項	<p>The Life Science industry has been in the grips of a reproducibility crisis for a number of years. Abcam is leading the way in addressing this with our range of recombinant monoclonal antibodies and knockout edited cell lines for gold-standard validation. Please check that this product meets your needs before purchasing.</p> <p>If you have any questions, special requirements or concerns, please send us an inquiry and/or contact our Support team ahead of purchase. Recommended alternatives for this product can be found below, along with publications, customer reviews and Q&As</p>

製品の特性

製品の状態	Liquid
保存方法	Shipped at 4°C. Store at +4°C short term (1-2 weeks). Upon delivery aliquot. Store at -20°C or -80°C. Avoid freeze / thaw cycle.
バッファー	pH: 7.30 Preservative: 0.02% Sodium azide Constituent: 0.5% BSA
精製度	Immunogen affinity purified
特記事項 (精製)	Purified from goat serum by ammonium sulphate precipitation followed by antigen affinity chromatography using the immunizing peptide.
ポリ/モノ	ポリクローナル
アイソタイプ	IgG

アプリケーション

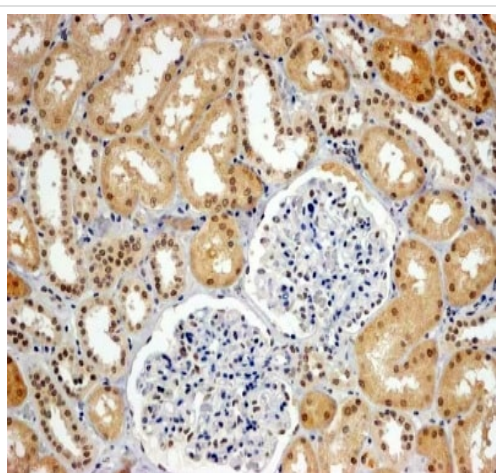
The Abpromise guarantee Abpromise保証は、次のテスト済みアプリケーションにおけるab18729の使用に適用されます
アプリケーションノートには、推奨の開始希釈率がありますが、適切な希釈率につきましてはご検討ください。

アプリケーション	Abreviews	特記事項
IHC-P		Use a concentration of 4 - 6 µg/ml. Perform heat mediated antigen retrieval with Tris/EDTA buffer pH 9.0 before commencing with IHC staining protocol.
WB		Use a concentration of 1 - 3 µg/ml. Predicted molecular weight: 72 kDa. 1 hour primary incubation is recommended for this product.

ターゲット情報

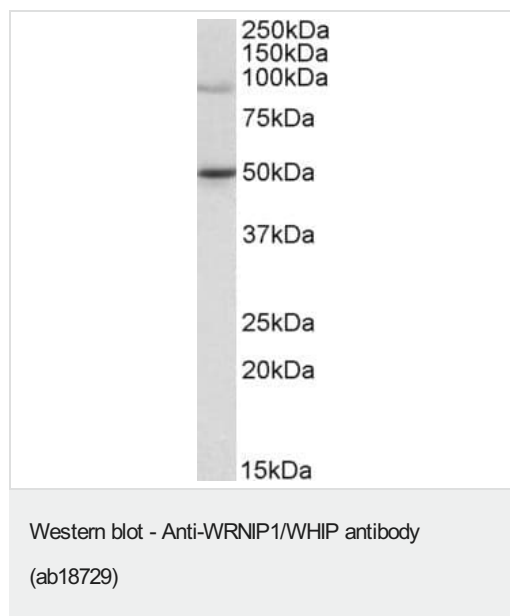
機能	Functions as a modulator for initiation or reinitiation events during DNA polymerase delta-mediated DNA synthesis. Has an intrinsic ATPase activity that functions as a sensor of DNA damage or of arrested replication forks and regulates the extent of DNA synthesis.
組織特異性	Ubiquitously expressed.
配列類似性	Belongs to the AAA ATPase family. Contains 1 UBZ-type zinc finger.
翻訳後修飾	Sumoylated by SUMO1 and SUMO2/3.
細胞内局在	Nucleus. Colocalizes with WRN in granular structures in the nucleus.

画像



ab18729 (4µg/ml) staining of paraffin embedded Human Kidney following steamed antigen retrieval with Tris/EDTA buffer pH 9 and HRP-staining shows nuclear staining, stronger in DCT compared to PCT.

Immunohistochemistry (Formalin/PFA-fixed paraffin-embedded sections) - Anti-WRNIP1/WHIP antibody (ab18729)



Anti-WRNIP1/WHIP antibody (ab18729) at 1 µg/ml + Jurkat Cell

Lysate in RIPA Buffer at 35 µg

Developed using the ECL technique.

Predicted band size: 72 kDa

Please note: All products are "FOR RESEARCH USE ONLY. NOT FOR USE IN DIAGNOSTIC PROCEDURES"

Our Abpromise to you: Quality guaranteed and expert technical support

- Replacement or refund for products not performing as stated on the datasheet
- Valid for 12 months from date of delivery
- Response to your inquiry within 24 hours
- We provide support in Chinese, English, French, German, Japanese and Spanish
- Extensive multi-media technical resources to help you
- We investigate all quality concerns to ensure our products perform to the highest standards

If the product does not perform as described on this datasheet, we will offer a refund or replacement. For full details of the Abpromise, please visit <https://www.abcam.co.jp/abpromise> or contact our technical team.

Terms and conditions

- Guarantee only valid for products bought direct from Abcam or one of our authorized distributors