

Anti-WIP1 antibody [EPR8110] - BSA and Azide free ab248208

リコンビナント **RabMAb**

画像数 4

製品の概要

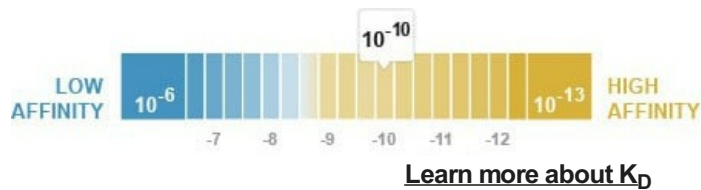
製品名	Anti-WIP1 antibody [EPR8110] - BSA and Azide free
製品の詳細	Rabbit monoclonal [EPR8110] to WIP1 - BSA and Azide free
由来種	Rabbit
アプリケーション	適用あり: IHC-P, WB 適用なし: Flow Cyt, ICC/IF or IP
種交差性	交差種: Mouse, Rat, Human
免疫原	Synthetic peptide. This information is proprietary to Abcam and/or its suppliers.
特記事項	<p>ab248208 is the carrier-free version of ab128901.</p> <p>Our carrier-free antibodies are typically supplied in a PBS-only formulation, purified and free of BSA, sodium azide and glycerol. The carrier-free buffer and high concentration allow for increased conjugation efficiency.</p> <p>This conjugation-ready format is designed for use with fluorochromes, metal isotopes, oligonucleotides, and enzymes, which makes them ideal for antibody labelling, functional and cell-based assays, flow-based assays (e.g. mass cytometry) and Multiplex Imaging applications.</p> <p>Use our conjugation kits for antibody conjugates that are ready-to-use in as little as 20 minutes with <1 minute hands-on-time and 100% antibody recovery: available for fluorescent dyes, HRP, biotin and gold.</p> <p>This product is compatible with the Maxpar[®] Antibody Labeling Kit from Fluidigm, without the need for antibody preparation. Maxpar[®] is a trademark of Fluidigm Canada Inc.</p> <p>This product is a recombinant monoclonal antibody, which offers several advantages including:</p> <ul style="list-style-type: none"> - High batch-to-batch consistency and reproducibility - Improved sensitivity and specificity - Long-term security of supply - Animal-free production <p>For more information see here.</p> <p>Our RabMAb[®] technology is a patented hybridoma-based technology for making rabbit monoclonal antibodies. For details on our patents, please refer to RabMAb[®] patents.</p>

製品の特性

製品の状態 Liquid

保存方法 Shipped at 4°C. Store at +4°C. Do Not Freeze.

解離定数 (K_D 値) K_D = 1.14 x 10⁻¹⁰ M



バッファー pH: 7.2
Constituent: PBS

キャリア・フリー はい

精製度 Protein A purified

ポリ/モノ モノクローナル

クローン名 EPR8110

アイソタイプ IgG

アプリケーション

The Abpromise guarantee **Abpromise保証は、次のテスト済みアプリケーションにおけるab248208の使用に適用されます**
アプリケーションノートには、推奨の開始希釈率がありますが、適切な希釈率につきましてはご検討ください。

アプリケーション	Abreviews	特記事項
IHC-P		Use at an assay dependent concentration. Perform heat mediated antigen retrieval before commencing with IHC staining protocol.
WB		Use at an assay dependent concentration. Detects a band of approximately 49 kDa (predicted molecular weight: 49 kDa).

追加情報 Is unsuitable for Flow Cyt, ICC/IF or IP.

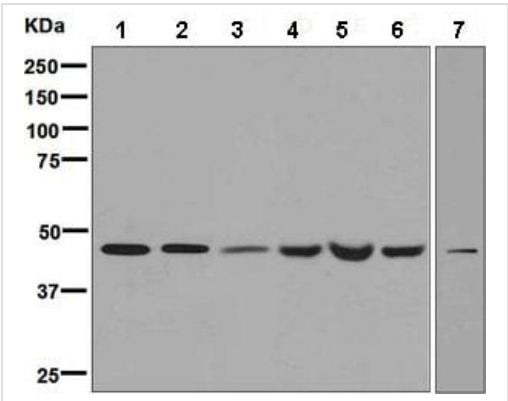
ターゲット情報

機能 May play a role in autophagy. May regulate the trafficking of proteins involved in the mannose-6-phosphate receptor (MPR) recycling pathway.

組織特異性 Ubiquitously expressed. Highly expressed in skeletal muscle, heart, testis, pancreas and placenta. Highly expressed in G361, Sk-mel-28, Sk-mel-13, WM852 and WM451 cells. Up-regulated in a variety of tumor tissues.

配列類似性 Belongs to the WD repeat SVP1 family.
Contains 3 WD repeats.

細胞内局在 Golgi apparatus > trans-Golgi network. Endosome. Cytoplasmic vesicle > clathrin-coated vesicle. Trans elements of the Golgi and peripheral endosomes. Dynamically cycles through these compartments and is susceptible to conditions that modulate membrane flux. Enriched in clathrin-coated vesicles.



Western blot - Anti-WIP1 antibody [EPR8110] - BSA and Azide free (ab248208)

All lanes : Anti-WIP1 antibody [EPR8110] ([ab128901](#)) at 1/1000 dilution

- Lane 1 :** A375 cell lysate
- Lane 2 :** BxPC-3 cell lysate
- Lane 3 :** 293T (Human embryonic kidney epithelial cell) cell lysate
- Lane 4 :** C6 cell lysate
- Lane 5 :** RAW 264.7 cell lysate
- Lane 6 :** NIH/3T3 cell lysate
- Lane 7 :** JAR cell lysate

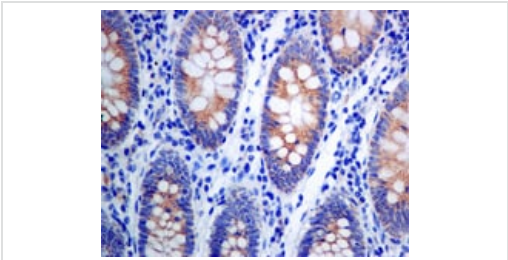
Lysates/proteins at 10 µg per lane.

Secondary

All lanes : Goat anti-Rabbit HRP at 1/2000 dilution

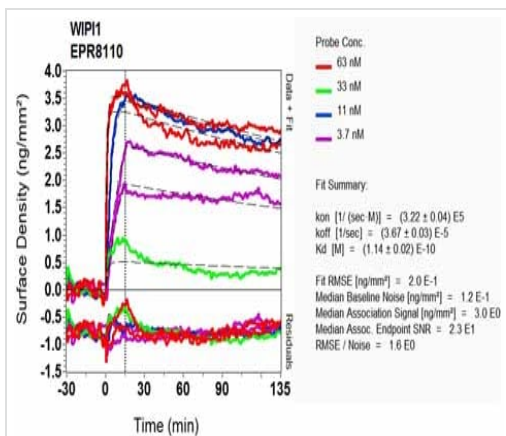
Predicted band size: 49 kDa

This data was developed using [ab128901](#), the same antibody clone in a different buffer formulation.



Immunohistochemistry (Formalin/PFA-fixed paraffin-embedded sections) - Anti-WIP1 antibody [EPR8110] - BSA and Azide free (ab248208)

This data was developed using [ab128901](#), the same antibody clone in a different buffer formulation.[ab128901](#) at 1/50 dilution staining WIP1 in Paraffin-embedded Human colon tissue by Immunohistochemistry. Perform heat mediated antigen retrieval before commencing with IHC staining protocol.



SPR Scanning - Anti-WIP1 antibody [EPR8110] -
BSA and Azide free (ab248208)

This data was developed using **ab128901**, the same antibody clone in a different buffer formulation. Equilibrium dissociation constant (K_D)

Learn more about K_D

[Click here to learn more about \$K_D\$](#)

Why choose a recombinant antibody?

Research with confidence
Consistent and reproducible results

Long-term and scalable supply
Recombinant technology

Success from the first experiment
Confirmed specificity

Ethical standards compliant
Animal-free production

Anti-WIP1 antibody [EPR8110] - BSA and Azide free (ab248208)

Please note: All products are "FOR RESEARCH USE ONLY. NOT FOR USE IN DIAGNOSTIC PROCEDURES"

Our Abpromise to you: Quality guaranteed and expert technical support

- Replacement or refund for products not performing as stated on the datasheet
- Valid for 12 months from date of delivery
- Response to your inquiry within 24 hours
- We provide support in Chinese, English, French, German, Japanese and Spanish

- Extensive multi-media technical resources to help you
- We investigate all quality concerns to ensure our products perform to the highest standards

If the product does not perform as described on this datasheet, we will offer a refund or replacement. For full details of the Abpromise, please visit <https://www.abcam.co.jp/abpromise> or contact our technical team.

Terms and conditions

- Guarantee only valid for products bought direct from Abcam or one of our authorized distributors