

### Anti-WDR77 antibody [EPR10708(B)] ab154190

リコンビナント **RabMAb**

★★★★★ **2 Abreviews** **4 References** 画像数 6

#### 製品の概要

製品名	Anti-WDR77 antibody [EPR10708(B)]
製品の詳細	Rabbit monoclonal [EPR10708(B)] to WDR77
由来種	Rabbit
特異性	The mouse and rat recommendation is based on the WB results. We do not guarantee IHC-P for mouse and rat.
アプリケーション	<b>適用あり:</b> Flow Cyt (Intra), WB, IHC-P, ICC/IF, IP
種交差性	<b>交差種:</b> Mouse, Rat, Human
免疫原	Synthetic peptide. This information is proprietary to Abcam and/or its suppliers.
ポジティブ・コントロール	IHC-P: Human breast cancer and human testis tissue; ICC/IF: 293T cells; Flow Cyt (intra): HeLa cells. WB: HeLa, HEK-293 whole cell lysate. Mouse kidney and spleen lysate and Rat lysate.
特記事項	<p>This product is a recombinant monoclonal antibody, which offers several advantages including:</p> <ul style="list-style-type: none"> <li>- High batch-to-batch consistency and reproducibility</li> <li>- Improved sensitivity and specificity</li> <li>- Long-term security of supply</li> <li>- Animal-free production</li> </ul> <p>For more information <a href="#">see here</a>.</p> <p>Our RabMAb<sup>®</sup> technology is a patented hybridoma-based technology for making rabbit monoclonal antibodies. For details on our patents, please refer to <a href="#">RabMAb<sup>®</sup> patents</a>.</p>

#### 製品の特性

製品の状態	Liquid
保存方法	Shipped at 4°C. Store at +4°C short term (1-2 weeks). Upon delivery aliquot. Store at -20°C long term. Avoid freeze / thaw cycle.
バッファー	<p>pH: 7.20</p> <p>Preservative: 0.01% Sodium azide</p> <p>Constituents: 59% PBS, 40% Glycerol (glycerin, glycerine), 0.05% BSA</p>
精製度	Protein A purified
ポリ/モノ	モノクローナル

クローン名                      EPR10708(B)  
アイソタイプ                      IgG

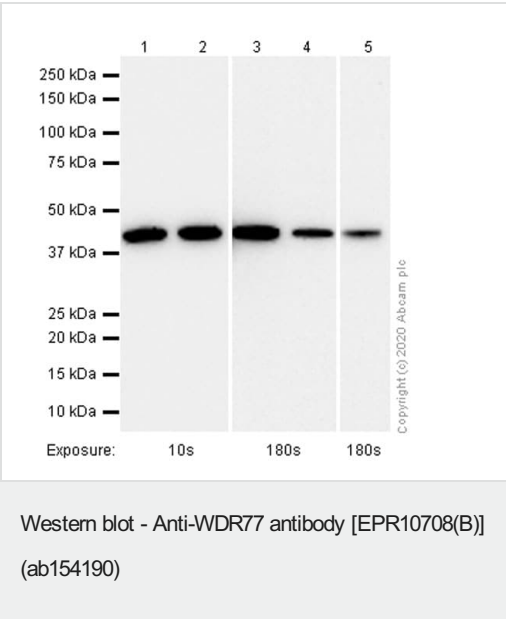
## アプリケーション

**The Abpromise guarantee**                      **Abpromise保証は、次のテスト済みアプリケーションにおけるab154190の使用に適用されます**  
アプリケーションノートには、推奨の開始希釈率がありますが、適切な希釈率につきましてはご検討ください。

アプリケーション	Abreviews	特記事項
Flow Cyt (Intra)		1/30. For unpurified use at 1/100 - 1/10000. <b>ab172730</b> - Rabbit monoclonal IgG, is suitable for use as an isotype control with this antibody.
WB	★★★★★ (1)	1/1000 - 1/10000. Predicted molecular weight: 37 kDa.
IHC-P		1/6000. Perform heat mediated antigen retrieval with citrate buffer pH 6 before commencing with IHC staining protocol. See <b><u>IHC antigen retrieval protocols</u></b> .  <b>For unpurified use at 1/50 - 1/100.</b>  The mouse and rat recommendation is based on the WB results. We do not guarantee IHC-P for mouse and rat.
ICC/IF	★★★★★ (1)	1/50 - 1/250.
IP		Use at an assay dependent concentration.

## ターゲット情報

機能	Non-catalytic component of the 20S PRMT5-containing methyltransferase complex, which modifies specific arginines to dimethylarginines in several spliceosomal Sm proteins. This modification targets Sm proteins to the survival of motor neurons (SMN) complex for assembly into small nuclear ribonucleoprotein core particles. Might play a role in transcription regulation. The 20S PRMT5-containing methyltransferase complex also methylates the Piwi proteins (PIWIL1, PIWIL2 and PIWIL4), methylation of Piwi proteins being required for the interaction with Tudor domain-containing proteins and subsequent localization to the meiotic nuage.
組織特異性	Highly expressed in heart, skeletal muscle, spleen, testis, uterus, prostate and thymus. In testis, expressed in germ cells and Leydig cells, but not in peritubular myocytes, nor in Sertoli cells. Expressed in prostate cancers, in seminomas and in Leydig cell tumors.
配列類似性	Contains 5 WD repeats.
発生段階	Expressed in Leydig cells during fetal testicular development, especially during the second semester. Germ cells expression is detected as early as 10 weeks of gestation.
細胞内局在	Nucleus. Cytoplasm. Nuclear in Leydig cells and cytoplasmic in germ cells during fetal testicular development. In adult testis, predominantly nuclear. Subcellular location varies from nuclear to cytoplasmic in various tumors.



**All lanes :** Anti-WDR77 antibody [EPR10708(B)] (ab154190) at 1/1000 dilution (Purified)

**Lane 1 :** HeLa (Human cervix adenocarcinoma epithelial cell) whole cell lysate

**Lane 2 :** HEK-293 (Human embryonic kidney epithelial cell) whole cell lysate

**Lane 3 :** Mouse spleen lysate

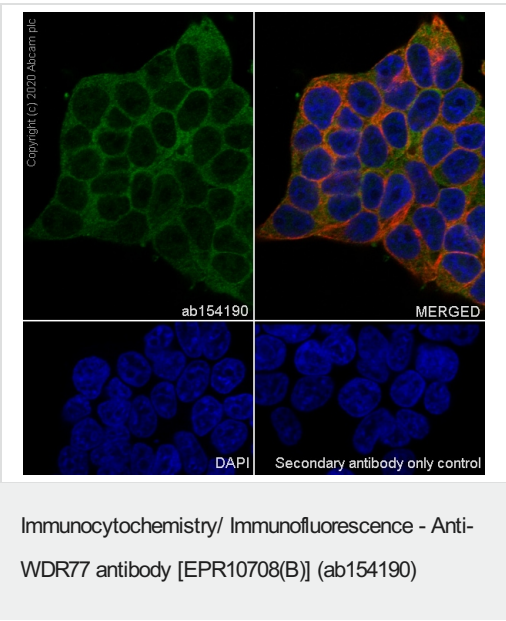
**Lane 4 :** Mouse kidney lysate

**Lane 5 :** Rat kidney lysate

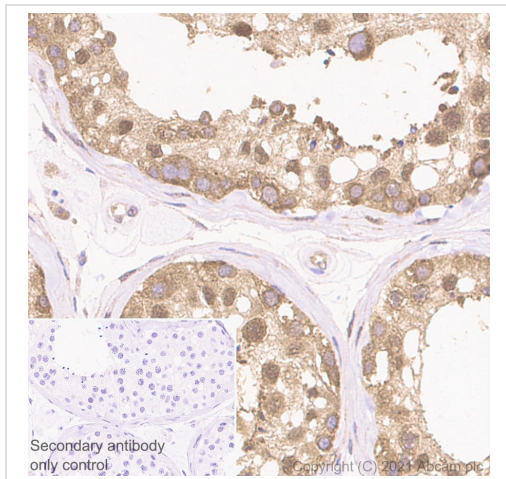
**Secondary**

**All lanes :** Goat Anti-Rabbit IgG H&L (HRP) (**ab97051**) at 1/20000 dilution

**Predicted band size:** 37 kDa



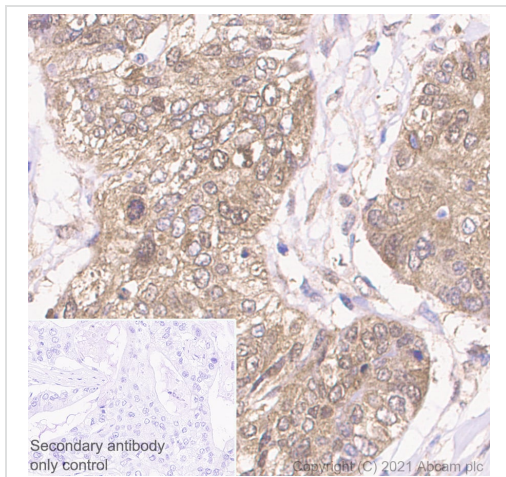
Immunocytochemistry analysis of 293T (Human embryonic kidney epithelial cell) cells labeling WDR77 with purified ab154190 at 1/50 dilution (5.58 µg/mL). Cells were fixed in 4% Paraformaldehyde and permeabilized with 0.1% tritonX-100. Cells were counterstained with Ab195889 Anti-alpha Tubulin antibody [DM1A] - Microtubule Marker (Alexa Fluor® 594) 1/200 (2.5 µg/mL). Goat anti rabbit IgG (Alexa Fluor® 488, **ab150077**) was used as the secondary antibody at 1/1000 (2 µg/mL) dilution. DAPI (blue) was used as nuclear counterstain. PBS instead of the primary antibody was used as the secondary antibody only control.



Immunohistochemistry (Formalin/PFA-fixed paraffin-embedded sections) - Anti-WDR77 antibody [EPR10708(B)] (ab154190)

Immunohistochemistry (Formalin/PFA-fixed paraffin-embedded sections) analysis of human testis tissue sections labeling WDR77 with purified ab154190 at 1/6000 dilution (0.05 µg/mL). Heat mediated antigen retrieval was performed using Heat mediated antigen retrieval using Bond™ Epitope Retrieval Solution 1 (pH 6.0). Tissue was counterstained with Hematoxylin. Rabbit specific IHC polymer detection kit HRP/DAB (**ab209101**) secondary antibody was used at 1/0 dilution. PBS instead of the primary antibody was used as the negative control.

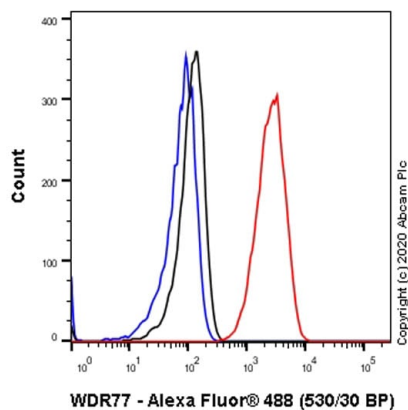
The immunostaining was performed on a Leica Biosystems BOND® RX instrument



Immunohistochemistry (Formalin/PFA-fixed paraffin-embedded sections) - Anti-WDR77 antibody [EPR10708(B)] (ab154190)

Immunohistochemistry (Formalin/PFA-fixed paraffin-embedded sections) analysis of human breast cancer tissue sections labeling WDR77 with purified ab154190 at 1/6000 dilution (0.05 µg/mL). Heat mediated antigen retrieval was performed using Heat mediated antigen retrieval using Bond™ Epitope Retrieval Solution 1 (pH 6.0). Tissue was counterstained with Hematoxylin. Rabbit specific IHC polymer detection kit HRP/DAB (**ab209101**) secondary antibody was used at 1/0 dilution. PBS instead of the primary antibody was used as the negative control.

The immunostaining was performed on a Leica Biosystems BOND® RX instrument



Copyright (c) 2020 Abcam Plc

WDR77 - Alexa Fluor® 488 (530/30 BP)

Flow Cytometry (Intracellular) - Anti-WDR77 antibody [EPR10708(B)] (ab154190)

Intracellular Flow Cytometry analysis of HeLa (Human cervix adenocarcinoma epithelial cell) cells labelling WDR77 with purified ab154190 at 1/30 dilution (10 µg/mL) (Red). Cells were fixed with 4% Paraformaldehyde and permeabilised with 90% Methanol. A Goat anti rabbit IgG (Alexa Fluor® 488, [ab150077](#)) secondary antibody was used at 1/2000. Isotype control - Rabbit monoclonal IgG (Black). Unlabelled control - Cell without incubation with primary antibody and secondary antibody (Blue).

Why choose a recombinant antibody?



Research with confidence  
Consistent and reproducible results



Long-term and scalable supply  
Recombinant technology



Success from the first experiment  
Confirmed specificity



Ethical standards compliant  
Animal-free production

Anti-WDR77 antibody [EPR10708(B)] (ab154190)

**Please note:** All products are "FOR RESEARCH USE ONLY. NOT FOR USE IN DIAGNOSTIC PROCEDURES"

## Our Abpromise to you: Quality guaranteed and expert technical support

- Replacement or refund for products not performing as stated on the datasheet
- Valid for 12 months from date of delivery
- Response to your inquiry within 24 hours
- We provide support in Chinese, English, French, German, Japanese and Spanish
- Extensive multi-media technical resources to help you
- We investigate all quality concerns to ensure our products perform to the highest standards

If the product does not perform as described on this datasheet, we will offer a refund or replacement. For full details of the Abpromise,

please visit <https://www.abcam.co.jp/abpromise> or contact our technical team.

## Terms and conditions

---

- Guarantee only valid for products bought direct from Abcam or one of our authorized distributors