

Anti-WDR19 antibody [EPR24915-11] - BSA and Azide free ab283709

リコンビナント **RabMAb**

画像数 4

製品の概要

製品名	Anti-WDR19 antibody [EPR24915-11] - BSA and Azide free
製品の詳細	Rabbit monoclonal [EPR24915-11] to WDR19 - BSA and Azide free
由来種	Rabbit
アプリケーション	適用あり: IP, WB 適用なし: Flow Cyt (Intra), ICC/IF or IHC-P
種交差性	交差種: Mouse, Rat, Human
免疫原	Recombinant fragment. This information is proprietary to Abcam and/or its suppliers.
ポジティブ・コントロール	WB: HEK-293, HeLa and mIMCD3 whole cell lysate; Human epididymis, Mouse testis and Rat testis tissue lysate. IP: mIMCD3 cell.
特記事項	<p>ab283709 is the carrier-free version of ab270970.</p> <p>Our carrier-free antibodies are typically supplied in a PBS-only formulation, purified and free of BSA, sodium azide and glycerol. The carrier-free buffer and high concentration allow for increased conjugation efficiency.</p> <p>This conjugation-ready format is designed for use with fluorochromes, metal isotopes, oligonucleotides, and enzymes, which makes them ideal for antibody labelling, functional and cell-based assays, flow-based assays (e.g. mass cytometry) and Multiplex Imaging applications.</p> <p>Use our conjugation kits for antibody conjugates that are ready-to-use in as little as 20 minutes with <1 minute hands-on-time and 100% antibody recovery: available for fluorescent dyes, HRP, biotin and gold.</p> <p>This product is compatible with the Maxpar[®] Antibody Labeling Kit from Fluidigm, without the need for antibody preparation. Maxpar[®] is a trademark of Fluidigm Canada Inc.</p> <p>This product is a recombinant monoclonal antibody, which offers several advantages including:</p> <ul style="list-style-type: none"> - High batch-to-batch consistency and reproducibility - Improved sensitivity and specificity - Long-term security of supply - Animal-free production <p>For more information see here.</p> <p>Our RabMAb[®] technology is a patented hybridoma-based technology for making rabbit monoclonal antibodies. For details on our patents, please refer to RabMAb[®] patents.</p>

製品の特性

製品の状態	Liquid
保存方法	Shipped at 4°C. Store at +4°C.
バッファー	pH: 7.2 Constituent: 100% PBS
キャリア・フリー	はい
精製度	Protein A purified
ポリ/モノ	モノクローナル
クローン名	EPR24915-11
アイソタイプ	IgG

アプリケーション

The Abpromise guarantee **Abpromise保証は、**次のテスト済みアプリケーションにおけるab283709の使用に適用されます
アプリケーションノートには、推奨の開始希釈率がありますが、適切な希釈率につきましてはご確認ください。

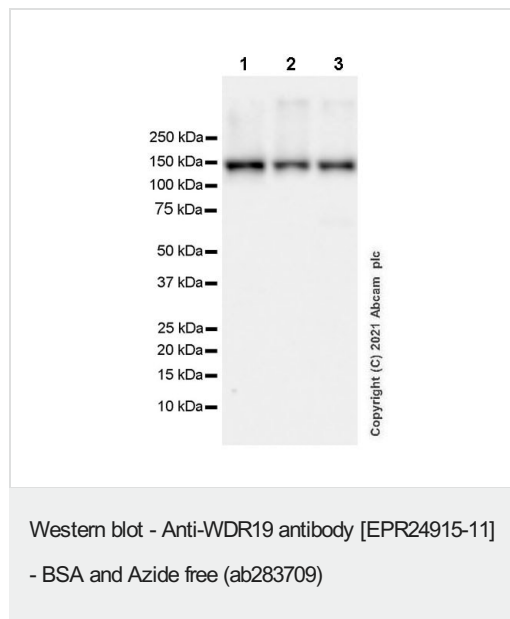
アプリケーション	Abreviews	特記事項
IP		Use at an assay dependent concentration.
WB		Use at an assay dependent concentration. Predicted molecular weight: 151 kDa.

追加情報 Is unsuitable for Flow Cyt (Intra), ICC/IF or IHC-P.

ターゲット情報

機能	Component of the IFT complex A (IFT-A), a complex required for retrograde ciliary transport (PubMed:20889716). Involved in cilia function and/or assembly (By similarity). Associates with the BBSome complex to mediate ciliary transport.
組織特異性	Some isoforms are tissue-specific. Highly expressed in the prostate. Lower expression in the cerebellum, pituitary gland, fetal lung, and pancreas. In normal prostate, expressed in both basal and luminal epithelial cells. No expression detected in fibromuscular stromal cells, endothelial cells, or infiltrating lymphocytes. Uniformed expression in prostate adenocarcinoma cells.
関連疾患	Cranioectodermal dysplasia 4 Short-rib thoracic dysplasia 5 with or without polydactyly Nephronophthisis 13 Senior-Loken syndrome 8
配列類似性	Contains 6 TPR repeats. Contains 6 WD repeats.
発生段階	Expressed in fetal lung.
細胞内局在	Cell projection, cilium. Cytoplasm, cytoskeleton, cilium basal body. Cell projection, cilium, photoreceptor outer segment. Localizes to photoreceptor connecting cilia, to the base of motile

画像



All lanes : Anti-WDR19 antibody [EPR24915-11] ([ab270970](#)) at 1/1000 dilution

Lane 1 : HEK-293 (human embryonic kidney epithelial cell), whole cell lysate

Lane 2 : HeLa (human cervix adenocarcinoma epithelial cell), whole cell lysate

Lane 3 : mIMCD3 (mouse inner medullary collecting duct epithelial cell), whole cell lysate

Lysates/proteins at 20 µg per lane.

Secondary

All lanes : Goat Anti-Rabbit IgG, (H+L), Peroxidase conjugated ([ab97051](#)) at 1/100000 dilution

Predicted band size: 151 kDa

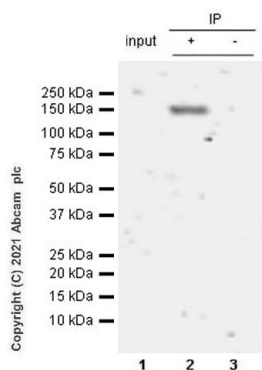
Observed band size: 150 kDa

This data was developed using [ab270970](#), the same antibody clone in a different buffer formulation.

Blocking and diluting buffer and concentration: 5% NFDm/TBST.

Samples are non-boiled as boiling may cause protein aggregates.

Exposure time: 26 seconds.



Immunoprecipitation - Anti-WDR19 antibody
[EPR24915-11] - BSA and Azide free (ab283709)

This data was developed using [ab270970](#), the same antibody clone in a different buffer formulation.

WDR19 was immunoprecipitated from 0.35 mg mIMCD3 (mouse inner medullary collecting duct epithelial cell), whole cell lysate 10 ug with [ab270970](#) at 1/30 dilution (2ug in 0.35mg lysates). Western blot was performed on the immunoprecipitate using [ab270970](#) at 1/1000 dilution. VeriBlot for IP secondary antibody(HRP) ([ab131366](#)) was used at 1/5000 dilution.

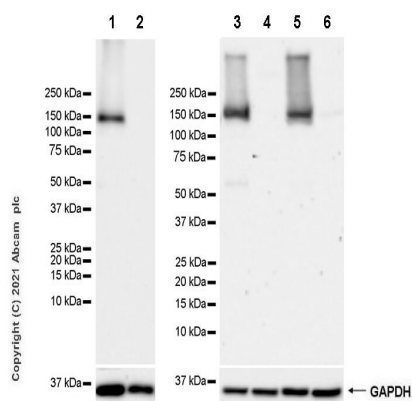
Lane 1: mIMCD3 (mouse inner medullary collecting duct epithelial cell), whole cell lysate 10 ug

Lane 2: [ab270970](#) IP in mIMCD3 whole cell lysate

Lane 3: Rabbit monoclonal IgG ([ab172730](#)) instead of [ab270970](#) in mIMCD3 whole cell lysate

Blocking and dilution buffer and concentration: 5% NFDm/TBST.

Exposure time: 3 minutes



Western blot - Anti-WDR19 antibody [EPR24915-11]
- BSA and Azide free (ab283709)

All lanes : Anti-WDR19 antibody [EPR24915-11] ([ab270970](#)) at 1/1000 dilution

Lane 1 : Human epididymis tissue lysate

Lane 2 : Human spleen tissue lysate

Lane 3 : Mouse testis tissue lysate

Lane 4 : Mouse spleen tissue lysate

Lane 5 : Rat testis tissue lysate

Lane 6 : Rat spleen tissue lysate

Lysates/proteins at 20 µg per lane.

Secondary

All lanes : Goat Anti-Rabbit IgG, (H+L), Peroxidase conjugated ([ab97051](#)) at 1/100000 dilution

Predicted band size: 151 kDa

Observed band size: 150 kDa

This data was developed using [ab270970](#), the same antibody clone in a different buffer formulation.

Blocking and diluting buffer and concentration: 5% NFDm/TBST.

Samples are non-boiled as boiling may cause protein aggregates.

Low expression: Spleen (PMID: 12906858)

Exposure time: Lane 1-2: 26 seconds; Lane 3-6: 103 seconds

Why choose a recombinant antibody?

 <p>Research with confidence Consistent and reproducible results</p>	 <p>Long-term and scalable supply Recombinant technology</p>
 <p>Success from the first experiment Confirmed specificity</p>	 <p>Ethical standards compliant Animal-free production</p>

Anti-WDR19 antibody [EPR24915-11] - BSA and Azide free (ab283709)

Please note: All products are "FOR RESEARCH USE ONLY. NOT FOR USE IN DIAGNOSTIC PROCEDURES"

Our Abpromise to you: Quality guaranteed and expert technical support

- Replacement or refund for products not performing as stated on the datasheet
- Valid for 12 months from date of delivery
- Response to your inquiry within 24 hours
- We provide support in Chinese, English, French, German, Japanese and Spanish
- Extensive multi-media technical resources to help you
- We investigate all quality concerns to ensure our products perform to the highest standards

If the product does not perform as described on this datasheet, we will offer a refund or replacement. For full details of the Abpromise, please visit <https://www.abcam.co.jp/abpromise> or contact our technical team.

Terms and conditions

- Guarantee only valid for products bought direct from Abcam or one of our authorized distributors