

Anti-WDR16 antibody ab127559

画像表示

医薬用外劇物

製品の概要

製品名	Anti-WDR16 antibody
製品の詳細	Rabbit polyclonal to WDR16
由来種	Rabbit
アプリケーション	適用あり: WB, IHC-P, ICC/IF
種交差性	交差種: Human
免疫原	Recombinant protein fragment corresponding to a region within amino acids 1-169 of Human WDR16.
ポジティブ・コントロール	HepG2 whole cell lysate (ab7900); methanol-fixed HeLa cells; CL15 xenograft
特記事項	<p>The Life Science industry has been in the grips of a reproducibility crisis for a number of years. Abcam is leading the way in addressing this with our range of recombinant monoclonal antibodies and knockout edited cell lines for gold-standard validation. Please check that this product meets your needs before purchasing.</p> <p>If you have any questions, special requirements or concerns, please send us an inquiry and/or contact our Support team ahead of purchase. Recommended alternatives for this product can be found below, along with publications, customer reviews and Q&As</p>

製品の特性

製品の状態	Liquid
保存方法	Shipped at 4°C. Upon delivery aliquot and store at -20°C or -80°C. Avoid repeated freeze / thaw cycles.
バッファー	pH: 7.00 Preservative: 0.01% Thimerosal (merthiolate) Constituents: 78.99% PBS, 1% BSA, 20% Glycerol (glycerin, glycerine)
精製度	Immunogen affinity purified
ポリモノ	ポリクローナル
アイソタイプ	IgG

アプリケーション

The Abpromise guarantee

Abpromise保証は、次のテスト済みアプリケーションにおけるab127559の使用に適用されます

アプリケーションノートには、推奨の開始希釈率がありますが、適切な希釈率につきましてはご確認ください。

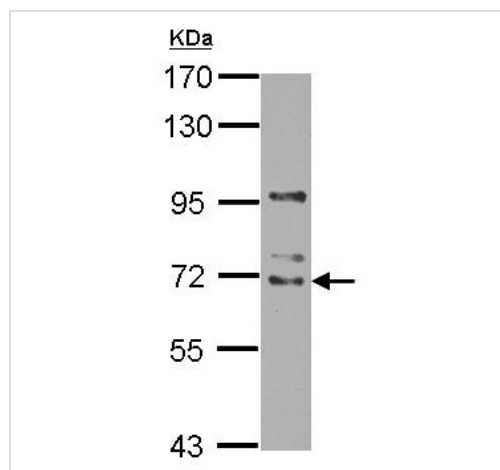
アプリケーション	Abreviews	特記事項
WB		1/500 - 1/3000. Predicted molecular weight: 68 kDa.
IHC-P		1/100 - 1/1000.
ICC/IF		1/100 - 1/1000.

ターゲット情報

関連性 WD repeat containing proteins, such as WDR16, play crucial roles in a wide range of physiologic functions, including signal transduction, RNA processing, remodeling the cytoskeleton, regulation of vesicular traffic, and cell division. [OMIM]

細胞内局在 Cytoplasm

画像

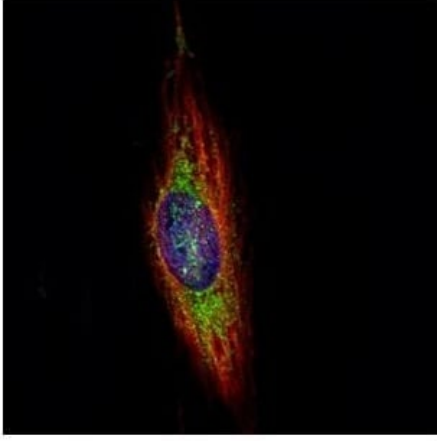


Anti-WDR16 antibody (ab127559) at 1/2000 dilution + HepG2 whole cell lysate at 30 µg

Predicted band size: 68 kDa

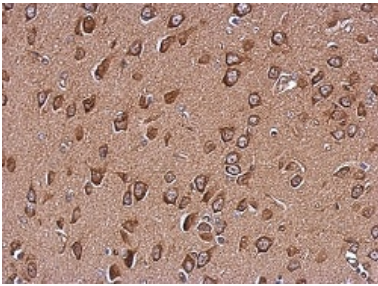
7.5% SDS PAGE

Western blot - Anti-WDR16 antibody (ab127559)



Immunocytochemistry/ Immunofluorescence - Anti-WDR16 antibody (ab127559)

ab127559, at a 1/500 dilution, staining WDR16 in methanol-fixed HeLa cells (green) by Confocal Immunofluorescence analysis (Olympus FV10i). Alpha tubulin filaments were labeled with an alpha tubulin antibody at a 1/2000 dilution (red).



Immunohistochemistry (Formalin/PFA-fixed paraffin-embedded sections) - Anti-WDR16 antibody (ab127559)

ab127559, at a 1/500 dilution, staining WDR16 in paraffin embedded CL15 xenograft by Immunohistochemistry.

Please note: All products are "FOR RESEARCH USE ONLY. NOT FOR USE IN DIAGNOSTIC PROCEDURES"

Our Abpromise to you: Quality guaranteed and expert technical support

- Replacement or refund for products not performing as stated on the datasheet
- Valid for 12 months from date of delivery
- Response to your inquiry within 24 hours
- We provide support in Chinese, English, French, German, Japanese and Spanish
- Extensive multi-media technical resources to help you
- We investigate all quality concerns to ensure our products perform to the highest standards

If the product does not perform as described on this datasheet, we will offer a refund or replacement. For full details of the Abpromise, please visit <https://www.abcam.co.jp/abpromise> or contact our technical team.

Terms and conditions

- Guarantee only valid for products bought direct from Abcam or one of our authorized distributors