


Anti-WDR1 antibody [EPR8793] ab173574

リコンビナント **RabMAb**

4 References **画像数 6**

製品の概要

製品名	Anti-WDR1 antibody [EPR8793]
製品の詳細	Rabbit monoclonal [EPR8793] to WDR1
由来種	Rabbit
アプリケーション	適用あり: WB, IHC-P, ICC/IF 適用なし: Flow Cyt or IP
種交差性	交差種: Human 交差が予測される動物種: Mouse, Rat, Chicken, Cow 
免疫原	Synthetic peptide within Human WDR1 aa 300-400. The exact sequence is proprietary. Database link: O75083
ポジティブ・コントロール	WB: Human heart tissue lysate. Jurkat, Raji, HT-1080 and U87-MG cell lysates. IHC: Human skeletal muscle tissue and endometrial carcinoma tissue. ICC/IF: Raji cells.
特記事項	This product is a recombinant monoclonal antibody, which offers several advantages including: <ul style="list-style-type: none"> - High batch-to-batch consistency and reproducibility - Improved sensitivity and specificity - Long-term security of supply - Animal-free production For more information see here . Our RabMAb [®] technology is a patented hybridoma-based technology for making rabbit monoclonal antibodies. For details on our patents, please refer to RabMAb[®] patents .

製品の特性

製品の状態	Liquid
保存方法	Shipped at 4°C. Store at +4°C short term (1-2 weeks). Upon delivery aliquot. Store at -20°C long term. Avoid freeze / thaw cycle.
バッファー	pH: 7.20 Preservative: 0.01% Sodium azide Constituents: 9% PBS, 40% Glycerol (glycerin, glycerine), 0.05% BSA, 50% Tissue culture supernatant
精製度	Tissue culture supernatant

ポリ/モノ	モノクローナル
クローン名	EPR8793
アイソタイプ	IgG

アプリケーション

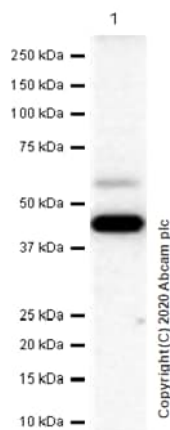
The Abpromise guarantee Abpromise保証は、次のテスト済みアプリケーションにおけるab173574の使用に適用されます
アプリケーションノートには、推奨の開始希釈率がありますが、適切な希釈率につきましてはご確認ください。

アプリケーション	Abreviews	特記事項
WB		1/1000 - 1/10000. Detects a band of approximately 75 kDa (predicted molecular weight: 66 kDa).
IHC-P		1/50 - 1/100. Perform heat mediated antigen retrieval with citrate buffer pH 6 before commencing with IHC staining protocol.
ICC/IF		1/50 - 1/100.

追加情報 Is unsuitable for Flow Cyt or IP.

ターゲット情報

画像



Western blot - Anti-WDR1 antibody [EPR8793]
(ab173574)

Anti-PDK2 antibody [EPR1948Y] (**ab68164**) at 1/200 dilution +
Human heart tissue lysate at 20 µg

Secondary

Goat Anti-Rabbit IgG, (HRP), with minimal cross-reactivity with human IgG at 1/2000 dilution

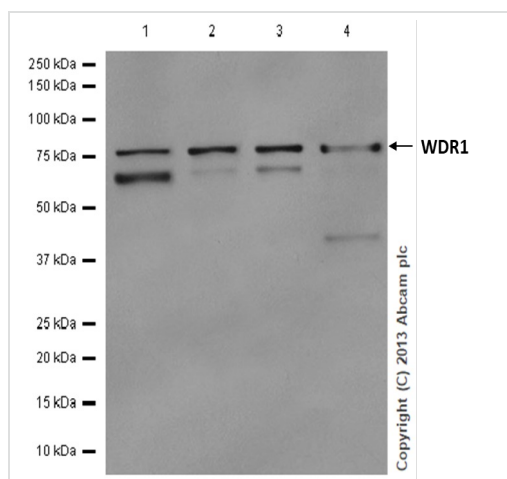
Predicted band size: 66 kDa

Observed band size: 46 kDa

Exposure time: 180 seconds

Buffer concentration: 5% NFDM /TBST.

For human samples, please use lower antibody dilution or upload more of the protein.



Western blot - Anti-WDR1 antibody [EPR8793] (ab173574)

All lanes : Anti-WDR1 antibody [EPR8793] (ab173574) at 1/2000 dilution

Lane 1 : Jurkat (Human T cell leukemia T lymphocyte) whole cell lysate

Lane 2 : Raji (Human Burkitt's lymphoma B lymphocyte) whole cell lysate

Lane 3 : HT-1080 (Human fibrosarcoma epithelial cell) whole cell lysate

Lane 4 : U-87 MG (Human glioblastoma-astrocytoma epithelial cell) whole cell lysate

Lysates/proteins at 10 µg per lane.

Secondary

All lanes : Goat Anti-Rabbit IgG H&L (HRP) ([ab97051](#)) at 1/20000 dilution

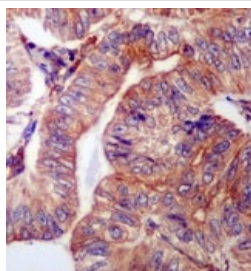
Predicted band size: 66 kDa

Observed band size: 75 kDa

Exposure time: 60 seconds

Buffer concentration: 5% NFDM /TBST

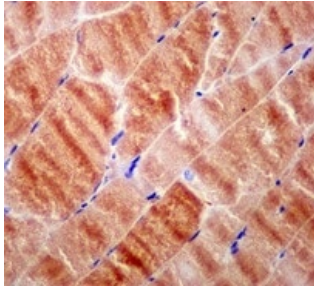
We are unsure as to the identity of the extra band below 75kDa.



Immunohistochemistry (Formalin/PFA-fixed paraffin-embedded sections) - Anti-WDR1 antibody [EPR8793] (ab173574)

Immunohistochemical analysis of paraffin-embedded Human endometrial carcinoma tissue labeling WDR1 with ab173574 at a 1/50 dilution.

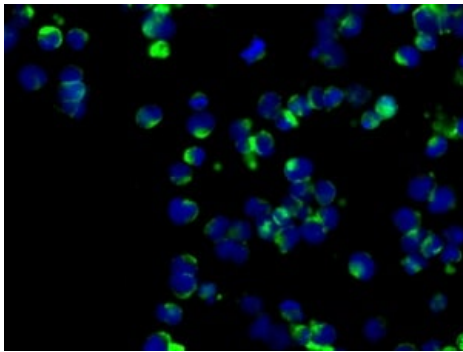
Perform heat mediated antigen retrieval with citrate buffer pH 6 before commencing with IHC staining protocol.



Immunohistochemistry (Formalin/PFA-fixed paraffin-embedded sections) - Anti-WDR1 antibody [EPR8793] (ab173574)

Immunohistochemical analysis of paraffin-embedded Human skeletal muscle tissue labeling WDR1 with ab173574 at a 1/50 dilution.

Perform heat mediated antigen retrieval with citrate buffer pH 6 before commencing with IHC staining protocol.



Immunocytochemistry/ Immunofluorescence - Anti-WDR1 antibody [EPR8793] (ab173574)

Immunofluorescence analysis of Raji cells labeling WDR1 with ab173574 at a 1/50 dilution (green). DAPI nuclear staining (blue).

Why choose a recombinant antibody?



Research with confidence
Consistent and reproducible results



Long-term and scalable supply
Recombinant technology



Success from the first experiment
Confirmed specificity



Ethical standards compliant
Animal-free production

Anti-WDR1 antibody [EPR8793] (ab173574)

Please note: All products are "FOR RESEARCH USE ONLY. NOT FOR USE IN DIAGNOSTIC PROCEDURES"

Our Abpromise to you: Quality guaranteed and expert technical support

- Replacement or refund for products not performing as stated on the datasheet
- Valid for 12 months from date of delivery
- Response to your inquiry within 24 hours
- We provide support in Chinese, English, French, German, Japanese and Spanish
- Extensive multi-media technical resources to help you
- We investigate all quality concerns to ensure our products perform to the highest standards

If the product does not perform as described on this datasheet, we will offer a refund or replacement. For full details of the Abpromise, please visit <https://www.abcam.co.jp/abpromise> or contact our technical team.

Terms and conditions

- Guarantee only valid for products bought direct from Abcam or one of our authorized distributors