


### Anti-VPS35 antibody [EPR11501(B)] ab157220

KO 評価済 リコンビナント RabMAb

22 References 画像数 8

#### 製品の概要

製品名	Anti-VPS35 antibody [EPR11501(B)]
製品の詳細	Rabbit monoclonal [EPR11501(B)] to VPS35
由来種	Rabbit
アプリケーション	<b>適用あり:</b> Flow Cyt (Intra), WB, IHC-P, ICC/IF <b>適用なし:</b> IP
種交差性	<b>交差種:</b> Mouse, Human <b>交差が予測される動物種:</b> Rat 
免疫原	Synthetic peptide within Human VPS35. The exact sequence is proprietary.
ポジティブ・コントロール	Flow Cyt (intra): MOLT4 cells. WB: HeLa, HepG2, Raji, MOLT4, wild-type HAP1, NIH/3T3 and A549 cell lysates. IHC-P: Human kidney and human ovarian carcinoma tissue. ICC/IF: Wild-type HAP1 cells.
特記事項	This product is a recombinant monoclonal antibody, which offers several advantages including: <ul style="list-style-type: none"> <li>- High batch-to-batch consistency and reproducibility</li> <li>- Improved sensitivity and specificity</li> <li>- Long-term security of supply</li> <li>- Animal-free production</li> </ul> For more information <a href="#">see here</a> . Our RabMAb <sup>®</sup> technology is a patented hybridoma-based technology for making rabbit monoclonal antibodies. For details on our patents, please refer to <a href="#">RabMAb<sup>®</sup> patents</a> .

#### 製品の特性

製品の状態	Liquid
保存方法	Shipped at 4°C. Store at -20°C.
バッファー	pH: 7.2 Preservative: 0.01% Sodium azide Constituents: 9% PBS, 40% Glycerol (glycerin, glycerine), 0.05% BSA, 50% Tissue culture supernatant
精製度	Protein A purified
ポリ/モノ	モノクローナル

クローン名	EPR11501(B)
アイソタイプ	IgG

## アプリケーション

**The Abpromise guarantee**      Abpromise保証は、次のテスト済みアプリケーションにおけるab157220の使用に適用されます  
アプリケーションノートには、推奨の開始希釈率がありますが、適切な希釈率につきましてはご確認ください。

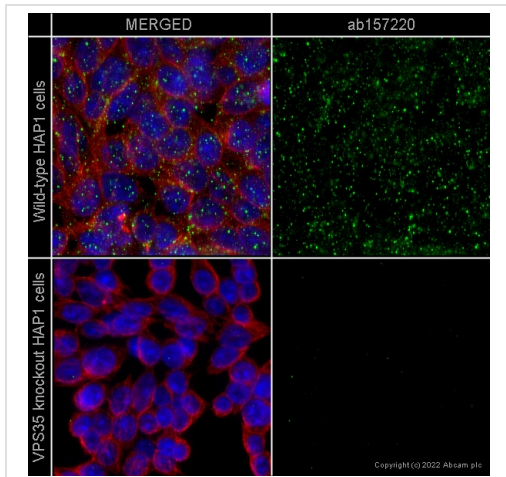
アプリケーション	Abreviews	特記事項
Flow Cyt (Intra)		1/10 - 1/100. <b>ab172730</b> - Rabbit monoclonal IgG, is suitable for use as an isotype control with this antibody.
WB		1/10000 - 1/50000. Predicted molecular weight: 92 kDa.
IHC-P		1/50 - 1/100. Perform heat mediated antigen retrieval before commencing with IHC staining protocol.
ICC/IF		Use a concentration of 0.2 µg/ml.

追加情報 Is unsuitable for IP.

## ターゲット情報

機能	Essential component of the retromer complex, a complex required to retrieve lysosomal enzyme receptors (IGF2R and M6PR) from endosomes to the trans-Golgi network. Also required to regulate transcytosis of the polymeric immunoglobulin receptor (pIgR-pIgA).
組織特異性	Ubiquitous. Highly expressed in heart, brain, placenta, skeletal muscle, spleen, thymus, testis, ovary, small intestine, kidney and colon.
配列類似性	Belongs to the VPS35 family.
細胞内局在	Cytoplasm. Membrane.

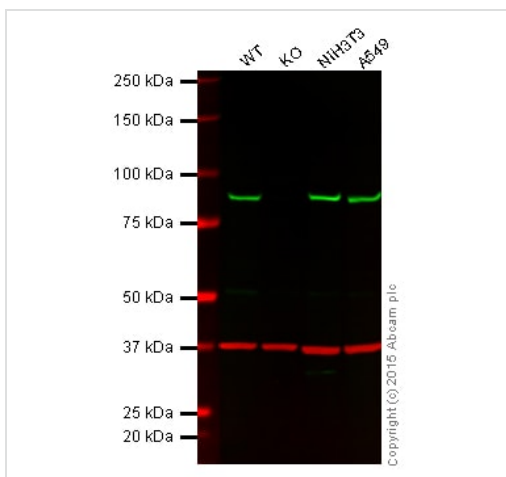
## 画像



Immunocytochemistry/ Immunofluorescence - Anti-VPS35 antibody [EPR11501(B)] (ab157220)

ab157220 staining VPS35 in wild-type HAP1 cells (top panel) and VPS35 knockout HAP1 cells (bottom panel). The cells were fixed with 100% Methanol (5 min), permeabilized with 0.1% Triton X-100 for 5 minutes and then blocked with 1% BSA/10% normal goat serum/0.3M glycine in 0.1% PBS-Tween for 1h. The cells were then incubated with ab157220 at 0.2 µg/mL and **ab7291** at 1 µg/mL overnight at +4°C, followed by a further incubation at room temperature for 1h with a goat secondary antibody to Rabbit IgG (Alexa Fluor® 488) (**ab150081**) (shown in pseudo colour green) and goat secondary antibody to Mouse IgG (Alexa Fluor® 594) (**ab150120**) (shown in pseudo colour red) both at 1/1000. Nuclear DNA was labelled with DAPI (shown in pseudo colour blue).

Image was acquired with a high-content analyser (Operetta CLS, Perkin Elmer) and a maximum intensity projection of confocal sections is shown.



Western blot - Anti-VPS35 antibody [EPR11501(B)] (ab157220)

**Lane 1:** Wild-type HAP1 cell lysate (20 µg)

**Lane 2:** VPS35 knockout HAP1 cell lysate (20 µg)

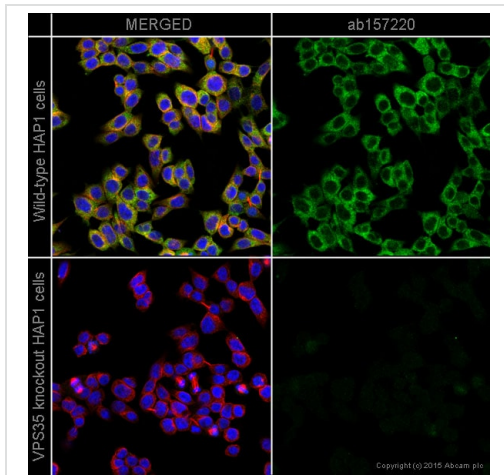
**Lane 3:** NIH/3T3 cell lysate (20 µg)

**Lane 4:** A549 cell lysate (20 µg)

**Lanes 1 - 4:** Merged signal (red and green). Green - ab157220 observed at 91 kDa. Red - loading control, **ab8245**, observed at 37 kDa.

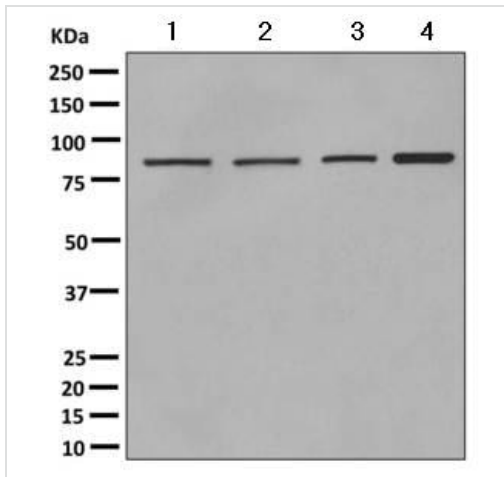
ab157220 was shown to specifically react with VPS35 in wild-type HAP1 cells. No band was observed when VPS35 knockout samples were examined. Wild-type and VPS35 knockout samples were subjected to SDS-PAGE. ab157220 and **ab8245** (loading control to GAPDH) were diluted 1/1000 and 1/2000 respectively and incubated overnight at 4°C. Blots were developed with Goat anti-Rabbit IgG H&L (IRDye® 800CW) preadsorbed (**ab216773**) and Goat anti-Mouse IgG H&L (IRDye® 680RD) preadsorbed (**ab216776**) secondary antibodies at 1/10,000 dilution

for 1 hour at room temperature before imaging.



Immunocytochemistry/ Immunofluorescence - Anti-VPS35 antibody [EPR11501(B)] (ab157220)

ab157220 staining VPS35 in wild-type HAP1 cells (top panel) and VPS35 knockout HAP1 cells (bottom panel). The cells were fixed with 4% formaldehyde (10min), permeabilized with 0.1% Triton X-100 for 5 minutes and then blocked with 1% BSA/10% normal goat serum/0.3M glycine in 0.1% PBS-Tween for 1h. The cells were then incubated with ab157220 at 1/250 dilution and **ab195889** at 1/250 dilution (shown in pseudo colour red) overnight at +4°C, followed by a further incubation at room temperature for 1h with a goat secondary antibody to Rabbit IgG (Alexa Fluor® 488) (**ab150081**) at 2 µg/ml (shown in green). Nuclear DNA was labelled in blue with DAPI.



Western blot - Anti-VPS35 antibody [EPR11501(B)] (ab157220)

**All lanes** : Anti-VPS35 antibody [EPR11501(B)] (ab157220) at 1/10000 dilution

**Lane 1** : HeLa cell lysate

**Lane 2** : HepG2 cell lysate

**Lane 3** : Raji cell lysate

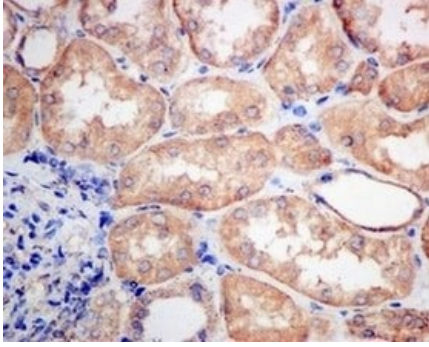
**Lane 4** : MOLT4 cell lysate

Lysates/proteins at 10 µg per lane.

#### Secondary

**All lanes** : Goat anti-rabbit HRP at 1/2000 dilution

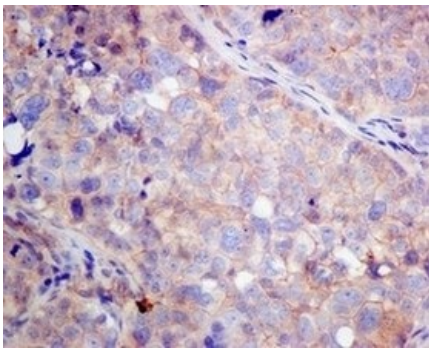
**Predicted band size:** 92 kDa



Immunohistochemistry (Formalin/PFA-fixed paraffin-embedded sections) - Anti-VPS35 antibody [EPR11501(B)] (ab157220)

Immunohistochemical analysis of paraffin-embedded Human kidney tissue labeling VPS35 with ab157220 at 1/50 dilution.

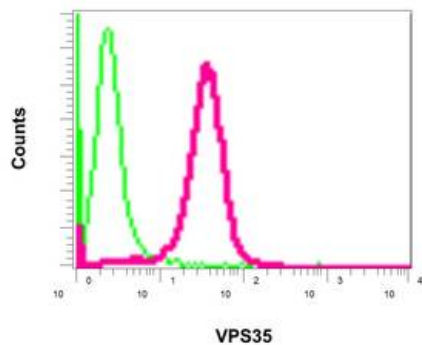
Perform heat mediated antigen retrieval before commencing with IHC staining protocol.



Immunohistochemistry (Formalin/PFA-fixed paraffin-embedded sections) - Anti-VPS35 antibody [EPR11501(B)] (ab157220)

Immunohistochemical analysis of paraffin-embedded Human ovarian carcinoma tissue labeling VPS35 with ab157220 at 1/50 dilution.

Perform heat mediated antigen retrieval before commencing with IHC staining protocol.



Flow Cytometry (Intracellular) - Anti-VPS35 antibody [EPR11501(B)] (ab157220)

Intracellular flow cytometric analysis of permeabilized MOLT4 cells labeling VPS35 with ab157220 at 1/10 dilution (red) or a rabbit IgG (negative) (green).

### Why choose a recombinant antibody?



**Research with confidence**  
Consistent and reproducible results



**Long-term and scalable supply**  
Recombinant technology



**Success from the first experiment**  
Confirmed specificity



**Ethical standards compliant**  
Animal-free production

Anti-VPS35 antibody [EPR11501(B)] (ab157220)

**Please note:** All products are "FOR RESEARCH USE ONLY. NOT FOR USE IN DIAGNOSTIC PROCEDURES"

### Our Abpromise to you: Quality guaranteed and expert technical support

---

- Replacement or refund for products not performing as stated on the datasheet
- Valid for 12 months from date of delivery
- Response to your inquiry within 24 hours
- We provide support in Chinese, English, French, German, Japanese and Spanish
- Extensive multi-media technical resources to help you
- We investigate all quality concerns to ensure our products perform to the highest standards

If the product does not perform as described on this datasheet, we will offer a refund or replacement. For full details of the Abpromise, please visit <https://www.abcam.co.jp/abpromise> or contact our technical team.

### Terms and conditions

---

- Guarantee only valid for products bought direct from Abcam or one of our authorized distributors