

Anti-VPS26 antibody [EPR13456] ab181352

KO 評価済 リコンビナント RabMAb

★★★★☆ 1 Abreviews 13 References 画像数 5

製品の概要

製品名	Anti-VPS26 antibody [EPR13456]
製品の詳細	Rabbit monoclonal [EPR13456] to VPS26
由来種	Rabbit
アプリケーション	適用あり: WB, ICC/IF, IP 適用なし: Flow Cyt or IHC-P
種交差性	交差種: Human 交差が予測される動物種: Mouse, Rat 
免疫原	Synthetic peptide. This information is proprietary to Abcam and/or its suppliers.
ポジティブ・コントロール	HepG2, HeLa, 293T, and A431 cell lysates; HeLa cells.
特記事項	<p>This product is a recombinant monoclonal antibody, which offers several advantages including:</p> <ul style="list-style-type: none"> - High batch-to-batch consistency and reproducibility - Improved sensitivity and specificity - Long-term security of supply - Animal-free production <p>For more information see here.</p> <p>Our RabMAb[®] technology is a patented hybridoma-based technology for making rabbit monoclonal antibodies. For details on our patents, please refer to RabMAb[®] patents.</p>

製品の特性

製品の状態	Liquid
保存方法	Shipped at 4°C. Store at +4°C short term (1-2 weeks). Upon delivery aliquot. Store at -20°C long term. Avoid freeze / thaw cycle.
バッファー	pH: 7.20 Preservative: 0.01% Sodium azide Constituents: 9% PBS, 40% Glycerol (glycerin, glycerine), 0.05% BSA, 50% Tissue culture supernatant
精製度	Tissue culture supernatant
ポリ/モノ	モノクローナル

クローン名 EPR13456
アイソタイプ IgG

アプリケーション

The Abpromise guarantee **Abpromise保証は、** 次のテスト済みアプリケーションにおけるab181352の使用に適用されます
アプリケーションノートには、推奨の開始希釈率がありますが、適切な希釈率につきましてはご確認ください。

アプリケーション	Abreviews	特記事項
WB	★★★★★ (1)	1/1000 - 1/10000. Predicted molecular weight: 38 kDa.
ICC/IF		1/100 - 1/250.
IP		1/10 - 1/100.

追加情報 Is unsuitable for Flow Cyt or IHC-P.

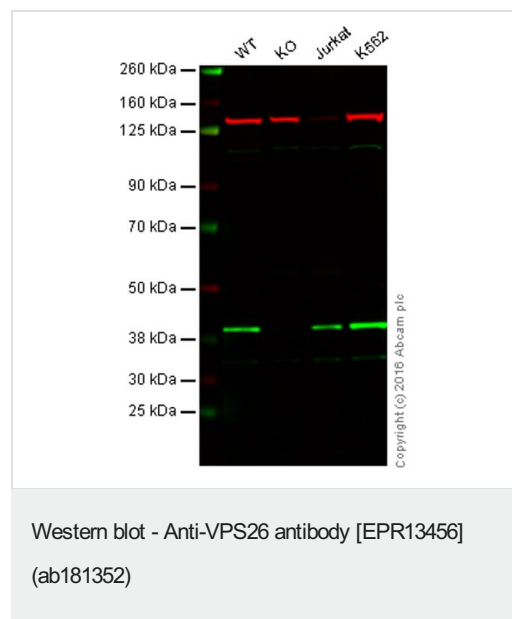
ターゲット情報

機能 Essential component of the retromer complex, a complex required to retrieve lysosomal enzyme receptors (IGF2R and M6PR) from endosomes to the trans-Golgi network. Also required to regulate transcytosis of the polymeric immunoglobulin receptor (pIgR-pIgA).

配列類似性 Belongs to the VPS26 family.

細胞内局在 Cytoplasm. Endosome membrane.

画像



Lane 1: Wild-type HAP1 cell lysate (20 µg)

Lane 2: VPS26 knockout HAP1 cell lysate (20 µg)

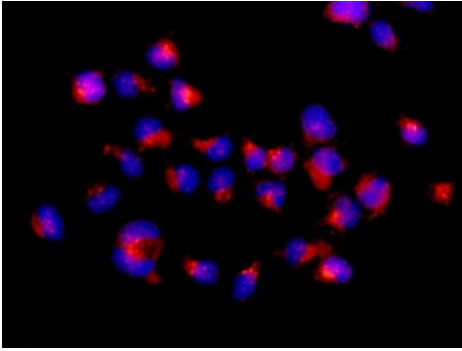
Lane 3: HeLa cell lysate (20 µg)

Lane 4: HepG2 cell lysate (20 µg)

Lanes 1 - 4: Merged signal (red and green). Green - ab181352 observed at 40 kDa. Red - loading control, **ab18058**, observed at 124 kDa.

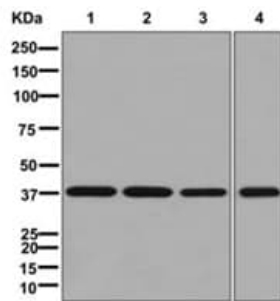
ab181352 was shown to specifically react with VPS26 when VPS26 knockout samples were used. Wild-type and VPS26 knockout samples were subjected to SDS-PAGE. ab181352 and **ab18058** (loading control to Vinculin) were diluted to 1/1000 and 1/10000 respectively and incubated overnight at 4°C. Blots were developed with Goat anti-Rabbit IgG H&L (IRDye® 800CW) preadsorbed (**ab216773**) and Goat anti-Mouse IgG H&L (IRDye® 680RD) preadsorbed (**ab216776**) secondary antibodies at

1/10000 dilution for 1 hour at room temperature before imaging.



Immunocytochemistry/ Immunofluorescence - Anti-VPS26 antibody [EPR13456] (ab181352)

Immunofluorescent analysis of HeLa cells labeling VPS26 with ab181352 at 1/100 dilution (red). DAPI nuclear staining (blue).



Western blot - Anti-VPS26 antibody [EPR13456] (ab181352)

All lanes : Anti-VPS26 antibody [EPR13456] (ab181352) at 1/1000 dilution

Lane 1 : HepG2 cell lysate

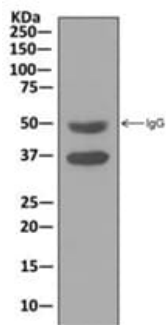
Lane 2 : HeLa cell lysate

Lane 3 : 293T cell lysate

Lane 4 : A431 cell lysate

Lysates/proteins at 10 µg per lane.

Predicted band size: 38 kDa



Immunoprecipitation - Anti-VPS26 antibody [EPR13456] (ab181352)

Western blot analysis on immunoprecipitation pellet from HeLa cell lysate pulling down VPS26 using ab181352 at 1/10 dilution.

Why choose a recombinant antibody?



Research with confidence
Consistent and reproducible results



Long-term and scalable supply
Recombinant technology



Success from the first experiment
Confirmed specificity



Ethical standards compliant
Animal-free production

Anti-VPS26 antibody [EPR13456] (ab181352)

Please note: All products are "FOR RESEARCH USE ONLY. NOT FOR USE IN DIAGNOSTIC PROCEDURES"

Our Abpromise to you: Quality guaranteed and expert technical support

- Replacement or refund for products not performing as stated on the datasheet
- Valid for 12 months from date of delivery
- Response to your inquiry within 24 hours
- We provide support in Chinese, English, French, German, Japanese and Spanish
- Extensive multi-media technical resources to help you
- We investigate all quality concerns to ensure our products perform to the highest standards

If the product does not perform as described on this datasheet, we will offer a refund or replacement. For full details of the Abpromise, please visit <https://www.abcam.co.jp/abpromise> or contact our technical team.

Terms and conditions

- Guarantee only valid for products bought direct from Abcam or one of our authorized distributors