

Anti-Vitronectin/S-Protein antibody ab272865

画像数 4

製品の概要

製品名	Anti-Vitronectin/S-Protein antibody
製品の詳細	Rabbit polyclonal to Vitronectin/S-Protein
由来種	Rabbit
アプリケーション	適用あり: WB, IHC-P
種交差性	交差種: Mouse, Human
免疫原	Recombinant fragment within Human Vitronectin/S-Protein. The exact sequence is proprietary. Center region. Database link: P04004
ポジティブ・コントロール	WB: Mouse brain tissue extract. HepG2 conditioned medium. IHC-P: Human colon and lung carcinoma tissue.
特記事項	<p>The Life Science industry has been in the grips of a reproducibility crisis for a number of years. Abcam is leading the way in addressing this with our range of recombinant monoclonal antibodies and knockout edited cell lines for gold-standard validation. Please check that this product meets your needs before purchasing.</p> <p>If you have any questions, special requirements or concerns, please send us an inquiry and/or contact our Support team ahead of purchase. Recommended alternatives for this product can be found below, along with publications, customer reviews and Q&As</p>

製品の特性

製品の状態	Liquid
保存方法	Shipped at 4°C. Store at +4°C short term (1-2 weeks). Upon delivery aliquot. Store at -20°C long term. Avoid freeze / thaw cycle.
バッファー	pH: 7.00 Preservative: 0.025% Proclin 300 Constituents: 78% PBS, 1% BSA, 20% Glycerol (glycerin, glycerine)
精製度	Immunogen affinity purified
ポリ/モノ	ポリクローナル
アイソタイプ	IgG

アプリケーション

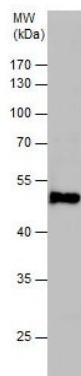
The Abpromise guarantee Abpromise保証は、次のテスト済みアプリケーションにおけるab272865の使用に適用されます
アプリケーションノートには、推奨の開始希釈率がありますが、適切な希釈率につきましてはご検討ください。

アプリケーション	Abreviews	特記事項
WB		1/500 - 1/3000.
IHC-P		1/100 - 1/1000. Perform heat mediated antigen retrieval with Tris/EDTA buffer pH 9.0 before commencing with IHC staining protocol.

ターゲット情報

機能	<p>Vitronectin is a cell adhesion and spreading factor found in serum and tissues. Vitronectin interact with glycosaminoglycans and proteoglycans. Is recognized by certain members of the integrin family and serves as a cell-to-substrate adhesion molecule. Inhibitor of the membrane-damaging effect of the terminal cytolytic complement pathway.</p> <p>Somatomedin-B is a growth hormone-dependent serum factor with protease-inhibiting activity.</p>
組織特異性	Plasma.
配列類似性	<p>Contains 4 hemopexin repeats.</p> <p>Contains 1 SMB (somatomedin-B) domain.</p>
ドメイン	The SMB domain mediates interaction with SERPINE1/PAI1. The heparin-binding domain mediates interaction with insulin.
翻訳後修飾	<p>Sulfated on 2 tyrosine residues.</p> <p>N- and O-glycosylated.</p> <p>Phosphorylation on Thr-69 and Thr-76 favors cell adhesion and spreading.</p> <p>It has been suggested that the active SMB domain may be permitted considerable disulfide bond heterogeneity or variability, thus two alternate disulfide patterns based on 3D structures are described with 1 disulfide bond conserved in both.</p> <p>Phosphorylation sites are present in the extracellular medium.</p>
細胞内局在	Secreted, extracellular space.

画像



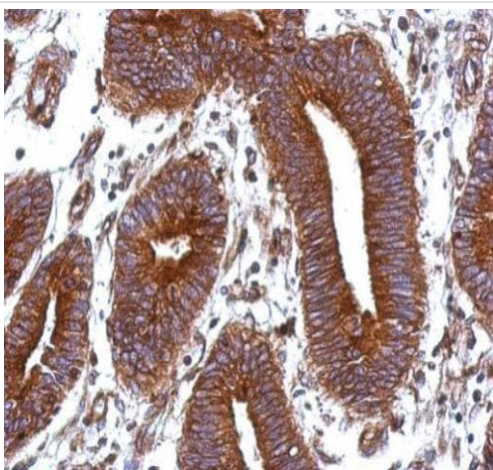
Western blot - Anti-Vitronectin/S-Protein antibody (ab272865)

Anti-Vitronectin/S-Protein antibody (ab272865) at 1/1000 dilution +
Mouse brain tissue extracts at 50 µg

Secondary

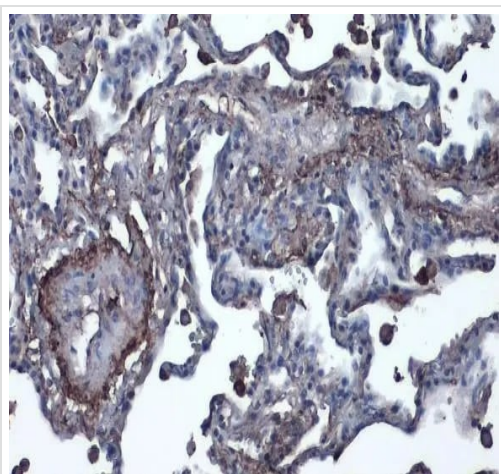
HRP-conjugated anti-rabbit IgG antibody

10% SDS-PAGE



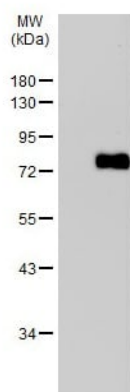
Immunohistochemistry (Formalin/PFA-fixed paraffin-embedded sections) - Anti-Vitronectin/S-Protein antibody (ab272865)

Paraffin-embedded human colon carcinoma tissue stained for
Vitronectin/S protein using ab272865 at 1/500 dilution in
immunohistochemical analysis. Antigen retrieval using EDTA
based, pH 8.0 buffer, 15 minutes.



Immunohistochemistry (Formalin/PFA-fixed paraffin-embedded sections) - Anti-Vitronectin/S-Protein antibody (ab272865)

Paraffin-embedded human lung carcinoma tissue stained for Vitronectin/S protein using ab272865 at 1/1000 dilution in immunohistochemical analysis. Antigen retrieval using Citrate buffer, pH 6.0, 15 min.



Western blot - Anti-Vitronectin/S-Protein antibody (ab272865)

All lanes : Anti-Vitronectin/S-Protein antibody (ab272865) at 1/1000 dilution

Lane 1 : HepG2 (human liver hepatocellular carcinoma cell line) whole cell lysate

Lane 2 : HepG2 conditioned medium

Lysates/proteins at 30 µg per lane.

Secondary

All lanes : HRP-conjugated anti-rabbit IgG antibody

10% SDS-PAGE

Please note: All products are "FOR RESEARCH USE ONLY. NOT FOR USE IN DIAGNOSTIC PROCEDURES"

Our Abpromise to you: Quality guaranteed and expert technical support

- Replacement or refund for products not performing as stated on the datasheet
- Valid for 12 months from date of delivery
- Response to your inquiry within 24 hours
- We provide support in Chinese, English, French, German, Japanese and Spanish
- Extensive multi-media technical resources to help you

- We investigate all quality concerns to ensure our products perform to the highest standards

If the product does not perform as described on this datasheet, we will offer a refund or replacement. For full details of the Abpromise, please visit <https://www.abcam.co.jp/abpromise> or contact our technical team.

Terms and conditions

- Guarantee only valid for products bought direct from Abcam or one of our authorized distributors