

violetFluor™ 450 Anti-PD1 antibody [RMP1-30] ab246683

画像数 1

製品の概要

製品名	violetFluor™ 450 Anti-PD1 antibody [RMP1-30]
製品の詳細	violetFluor™ 450 Rat monoclonal [RMP1-30] to PD1
由来種	Rat
標識	violetFluor™ 450. Ex: 405nm, Em: 450nm
アプリケーション	適用あり: Flow Cyt
種交差性	交差種: Mouse
免疫原	The details of the immunogen for this antibody are not available.
ポジティブ・コントロール	Flow Cyt: ConA stimulated C57Bl/6 splenocytes.
特記事項	<p>The Life Science industry has been in the grips of a reproducibility crisis for a number of years. Abcam is leading the way in addressing this with our range of recombinant monoclonal antibodies and knockout edited cell lines for gold-standard validation. Please check that this product meets your needs before purchasing.</p> <p>If you have any questions, special requirements or concerns, please send us an inquiry and/or contact our Support team ahead of purchase. Recommended alternatives for this product can be found below, along with publications, customer reviews and Q&As</p>

製品の特性

製品の状態	Liquid
保存方法	Shipped at 4°C. Store at +4°C. Store In the Dark.
バッファー	pH: 7.20 Preservative: 0.09% Sodium azide Constituents: 0.16% Sodium phosphate, 0.87% Sodium chloride, 0.1% Gelatin
精製度	Affinity purified
特記事項(精製)	ab246683 was purified from tissue culture supernatant via affinity chromatography. The purified antibody was conjugated under optimal conditions, with unreacted dye removed from the preparation.
ポリ/モノ	モノクローナル
クローン名	RMP1-30
アイソタイプ	IgG2a

アプリケーション

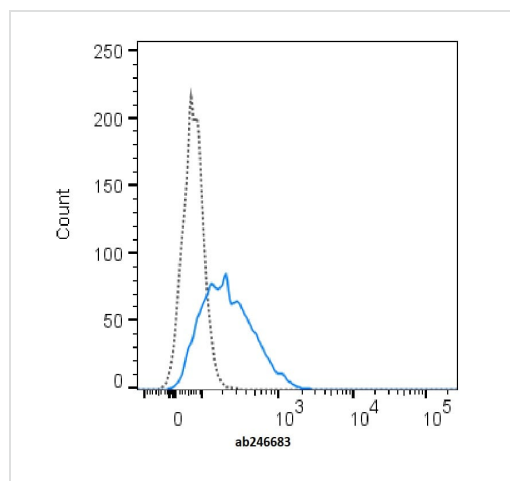
The Abpromise guarantee **Abpromise保証は、次のテスト済みアプリケーションにおけるab246683の使用に適用されず**
アプリケーションノートには、推奨の開始希釈率がありますが、適切な希釈率につきましてはご検討ください。

アプリケーション	Abreviews	特記事項
Flow Cyt		Use at an assay dependent concentration. 0.5 µg

ターゲット情報

機能	Possible cell death inducer, in association with other factors.
関連疾患	Genetic variation in PDCD1 is associated with susceptibility to systemic lupus erythematosus type 2 (SLEB2) [MIM:605218]. Systemic lupus erythematosus is a chronic, inflammatory and often febrile multisystemic disorder of connective tissue. It affects principally the skin, joints, kidneys and serosal membranes. It is thought to represent a failure of the regulatory mechanisms of the autoimmune system.
配列類似性	Contains 1 Ig-like V-type (immunoglobulin-like) domain.
発生段階	Induced at programmed cell death.
細胞内局在	Membrane.

画像



C57Bl/6 splenocytes were stimulated with ConA and then stained with 0.5 µg ab246683 (Solid line) or 0.5 µg violetFluor™ 450 Rat IgG2b isotype control (Dashed line).

Flow Cytometry - violetFluor™ 450 Anti-PD1 antibody [RMP1-30] (ab246683)

Please note: All products are "FOR RESEARCH USE ONLY. NOT FOR USE IN DIAGNOSTIC PROCEDURES"

Our Abpromise to you: Quality guaranteed and expert technical support

- Replacement or refund for products not performing as stated on the datasheet
- Valid for 12 months from date of delivery
- Response to your inquiry within 24 hours

- We provide support in Chinese, English, French, German, Japanese and Spanish
- Extensive multi-media technical resources to help you
- We investigate all quality concerns to ensure our products perform to the highest standards

If the product does not perform as described on this datasheet, we will offer a refund or replacement. For full details of the Abpromise, please visit <https://www.abcam.co.jp/abpromise> or contact our technical team.

Terms and conditions

- Guarantee only valid for products bought direct from Abcam or one of our authorized distributors