


Anti-Vinculin antibody ab155120

5 References [画像数 4](#)

製品の概要

製品名	Anti-Vinculin antibody
製品の詳細	Rabbit polyclonal to Vinculin
由来種	Rabbit
アプリケーション	適用あり: WB, IHC-P, ICC/IF
種交差性	交差種: Mouse, Human 交差が予測される動物種: Rat, Chicken, Cow, Xenopus tropicalis 
免疫原	<p>Recombinant fragment within Human Vinculin aa 50-350. The exact immunogen sequence used to generate this antibody is proprietary information. If additional detail on the immunogen is needed to determine the suitability of the antibody for your needs, please <u>contact</u> our Scientific Support team to discuss your requirements.</p> <p>Database link: <u>P18206-1</u></p>
ポジティブ・コントロール	NT2D1, U87-MG, MCF-7 and mouse brain tissue whole cell lysates, MCF-7 cells, Human hepatoma tissue.
特記事項	<p>The Life Science industry has been in the grips of a reproducibility crisis for a number of years. Abcam is leading the way in addressing this with our range of recombinant monoclonal antibodies and knockout edited cell lines for gold-standard validation. Please check that this product meets your needs before purchasing.</p> <p>If you have any questions, special requirements or concerns, please send us an inquiry and/or contact our Support team ahead of purchase. Recommended alternatives for this product can be found below, along with publications, customer reviews and Q&As</p>

製品の特性

製品の状態	Liquid
保存方法	Shipped at 4°C. Upon delivery aliquot. Store at -20°C or -80°C. Avoid freeze / thaw cycle.
バッファー	<p>pH: 7.00</p> <p>Preservative: 0.025% Proclin 300</p> <p>Constituents: 79% PBS, 20% Glycerol (glycerin, glycerine)</p>
精製度	Immunogen affinity purified
ポリモノ	ポリクローナル
アイソタイプ	IgG

アプリケーション

The Abpromise guarantee **Abpromise保証は、次のテスト済みアプリケーションにおけるab155120の使用に適用されます**
アプリケーションノートには、推奨の開始希釈率がありますが、適切な希釈率につきましてはご検討ください。

アプリケーション	Abreviews	特記事項
WB		1/500 - 1/3000. Predicted molecular weight: 124 kDa.
IHC-P		1/100 - 1/1000. Perform heat mediated antigen retrieval with citrate buffer pH 6 before commencing with IHC staining protocol. Alternative antigen retrieval buffer: Tris-EDTA buffer pH 8.
ICC/IF		1/100 - 1/1000.

ターゲット情報

機能	Actin filament (F-actin)-binding protein involved in cell-matrix adhesion and cell-cell adhesion. Regulates cell-surface E-cadherin expression and potentiates mechanosensing by the E-cadherin complex. May also play important roles in cell morphology and locomotion.
組織特異性	Metavinculin is muscle-specific.
関連疾患	Defects in VCL are the cause of cardiomyopathy dilated type 1W (CMD1W) [MIM:611407]. Dilated cardiomyopathy is a disorder characterized by ventricular dilation and impaired systolic function, resulting in congestive heart failure and arrhythmia. Patients are at risk of premature death. Defects in VCL are the cause of cardiomyopathy familial hypertrophic type 15 (CMH15) [MIM:613255]. It is a hereditary heart disorder characterized by ventricular hypertrophy, which is usually asymmetric and often involves the interventricular septum. The symptoms include dyspnea, syncope, collapse, palpitations, and chest pain. They can be readily provoked by exercise. The disorder has inter- and intrafamilial variability ranging from benign to malignant forms with high risk of cardiac failure and sudden cardiac death.
配列類似性	Belongs to the vinculin/alpha-catenin family.
ドメイン	Exists in at least two conformations. When in the closed, 'inactive' conformation, extensive interactions between the head and tail domains prevent detectable binding to most of its ligands. It takes on an 'active' conformation after cooperative and simultaneous binding of two different ligands. This activation involves displacement of the head-tail interactions and leads to a significant accumulation of ternary complexes. The active form then binds a number of proteins that have both signaling and structural roles that are essential for cell adhesion. The N-terminal globular head (Vh) comprises of subdomains D1-D4. The C-terminal tail (Vt) binds F-actin and cross-links actin filaments into bundles. An intramolecular interaction between Vh and Vt masks the F-actin-binding domain located in Vt. The binding of talin and alpha-actinin to the D1 subdomain of vinculin induces a helical bundle conversion of this subdomain, leading to the disruption of the intramolecular interaction and the exposure of the cryptic F-actin-binding domain of Vt. Vt inhibits actin filament barbed end elongation without affecting the critical concentration of actin assembly.
翻訳後修飾	Phosphorylated; on serines, threonines and tyrosines. Phosphorylation on Tyr-1133 in activated platelets affects head-tail interactions and cell spreading but has no effect on actin binding nor on

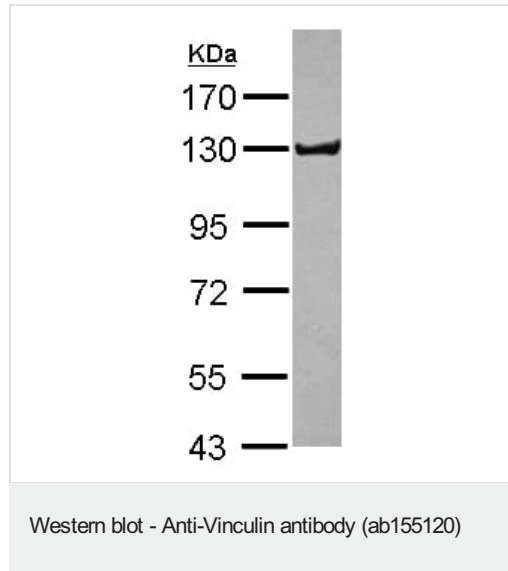
localization to focal adhesion plaques.

Acetylated; mainly by myristic acid but also small amount of palmitic acid.

細胞内局在

Cytoplasm > cytoskeleton. Cell junction > adherens junction. Cell membrane. Cytoplasmic face of adhesion plaques. Recruitment to cell-cell junctions occurs in a myosin II-dependent manner. Interaction with CTNNB1 is necessary for its localization to the cell-cell junctions.

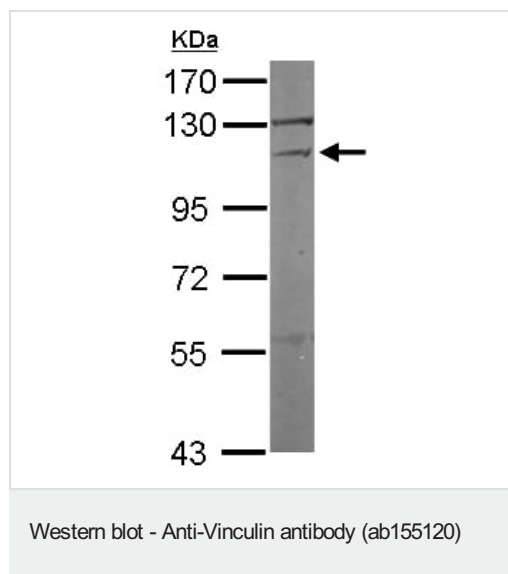
画像



Anti-Vinculin antibody (ab155120) at 1/1000 dilution + NT2D1 whole cell lysate at 30 μ g

Predicted band size: 124 kDa

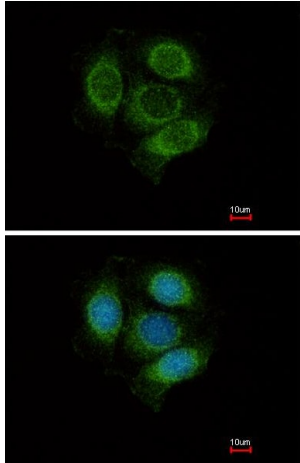
7.5% SDS PAGE



Anti-Vinculin antibody (ab155120) at 1/1000 dilution + Mouse brain whole cell lysate at 50 μ g

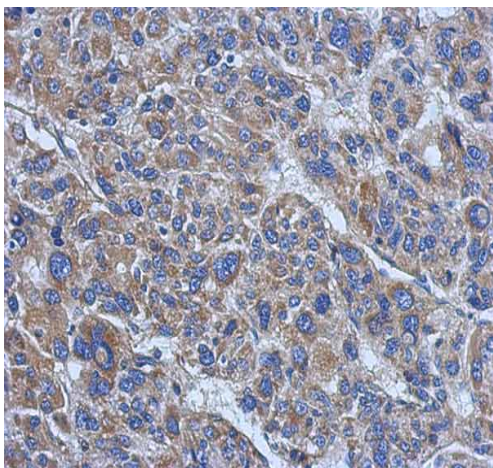
Predicted band size: 124 kDa

7.5% SDS PAGE



Immunofluorescent analysis of paraffin methanol-fixed MCF-7 cells, labeling Vinculin with ab155120 at 1/500 dilution. Lower panel shows costaining of ab155120 (green) with Hoechst 33342 (blue).

Immunocytochemistry/ Immunofluorescence - Anti-Vinculin antibody (ab155120)



Immunohistochemical analysis of paraffin-embedded Human hepatoma tissue, labeling Vinculin with ab155120 at 1/500 dilution.

Immunohistochemistry (Formalin/PFA-fixed paraffin-embedded sections) - Anti-Vinculin antibody (ab155120)

Please note: All products are "FOR RESEARCH USE ONLY. NOT FOR USE IN DIAGNOSTIC PROCEDURES"

Our Abpromise to you: Quality guaranteed and expert technical support

- Replacement or refund for products not performing as stated on the datasheet

- Valid for 12 months from date of delivery
- Response to your inquiry within 24 hours
- We provide support in Chinese, English, French, German, Japanese and Spanish
- Extensive multi-media technical resources to help you
- We investigate all quality concerns to ensure our products perform to the highest standards

If the product does not perform as described on this datasheet, we will offer a refund or replacement. For full details of the Abpromise, please visit <https://www.abcam.co.jp/abpromise> or contact our technical team.

Terms and conditions

- Guarantee only valid for products bought direct from Abcam or one of our authorized distributors